

CORNER RECORD

COUNTY OF Merced T. 12 S R. 8 E Mt. Diablo MESSIAH CALIFORNIA
 CORNER TYPE: GOVT. CORNER MEANDER LAMCHO CONTROL OTHER
 CORNER IDENTIFICATION — DATE OF VISIT June 4, 1982



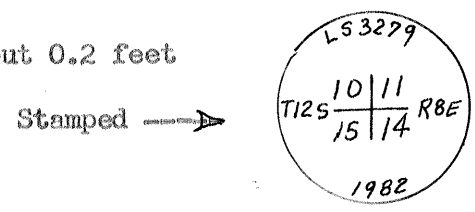
Section Corner

10	11
15	14

CORNER — LEFT AS FOUND FOUND AND TAGGED REESTABLISHED OBLITERATED CORNER RESULT
 PHYSICAL DESCRIPTION OF CORNER FOUND; EVIDENCE AND METHOD USED TO IDENTIFY OR REESTABLISH

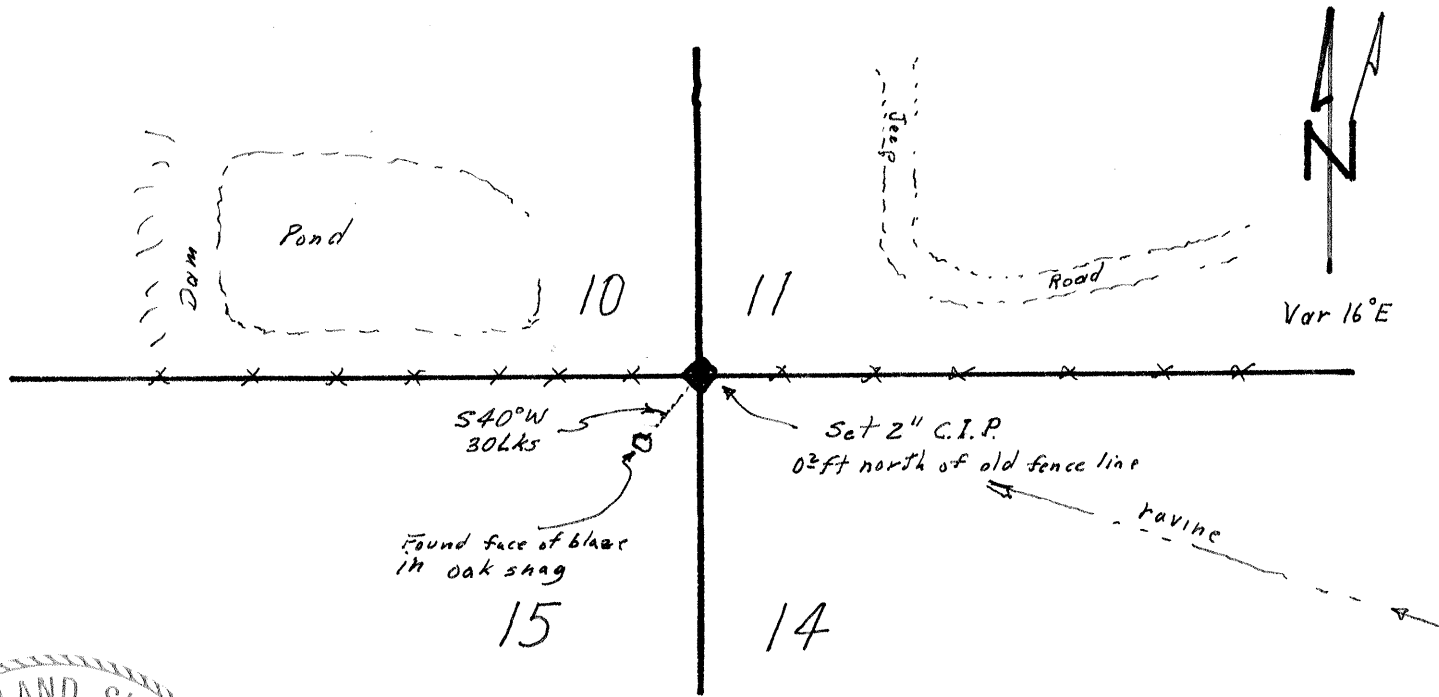
Found obscured face of original BT in a 19" Oak snag at a position that was 10" dia. when blazed. This was the BT S 40° W 30 lks from the corner. The other two BT's are gone due to dam & road construction.

PHYSICAL DESCRIPTION OF MONUMENTS RESULT OR PERPETUATED
 Set 2" C.I.P. N 40° E 30 lks from the original BT about 0.2 feet north of a very old E-W fence line.



CALIFORNIA COORDINATE SYSTEM ORDER: FIRST SECOND THIRD
 STATIONS USED: NGS (USC & OSI) STATE COUNTY OTHER STATION _____ STATION _____
 ZONE _____ ELEVATION 1420 NORTHINGS (Y) _____ EASTINGS (X) _____

SKETCH: (Include reference tie or witness points, remarks and topo of area)



SURVEYOR'S CERTIFICATE
 THIS CORNER RECORD WAS PREPARED BY ME OR UNDER MY DIRECTION IN CONFORMANCE WITH THE LAND SURVEYORS ACT ON June 22, 1982
 SIGNED: Homer Banks Jr.
 No. LS3279

COUNTY SURVEYOR'S CERTIFICATE
 THE CORNER RECORD WAS RECEIVED Aug. 12, 1983 AND EXAMINED AND FILED May 25, 1983
 BY: [Signature]
 TITLE: County Surveyor
 DOCUMENT No. 2793A
 STATEMENT ON BACK OF SHEET

REPORTED RECOVERIES ARE IN DISPUT WITH PARCEL MAP FILED
SEPTEMBER 25, 1981 IN BOOK 45 OF PARCEL MAPS AT PAGES 45-46,
AND WITH RECORD OF SURVEY FILED FEBRUARY 16, 1982 IN BOOK 19
AT PAGE 34 OF SURVEYS.