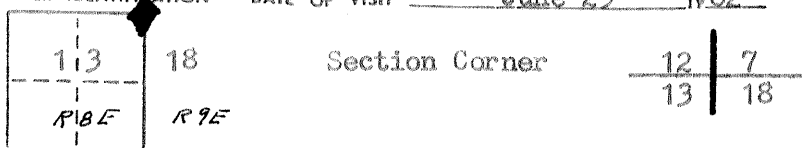


CORNER RECORD

COUNTY OF Merced T. 12 S R. 8 & 9 E Mt. Diablo MERIDIAN CALIFORNIA

CORNER TYPE: GOVT. CORNER MEANDER RANCHO CONTROL OTHER
 CORNER IDENTIFICATION — DATE OF VISIT June 25 1982

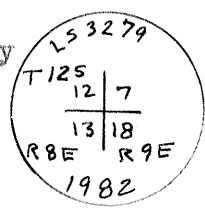


CORNER — LEFT AS FOUND FOUND AND TAGGED REESTABLISHED OBLITERATED CORNER REBUILT

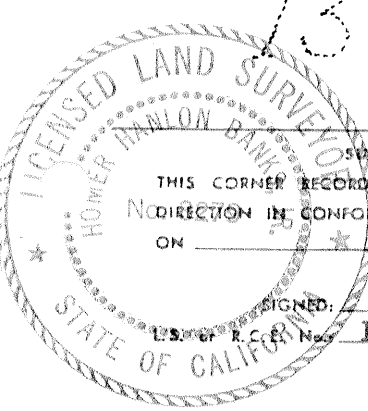
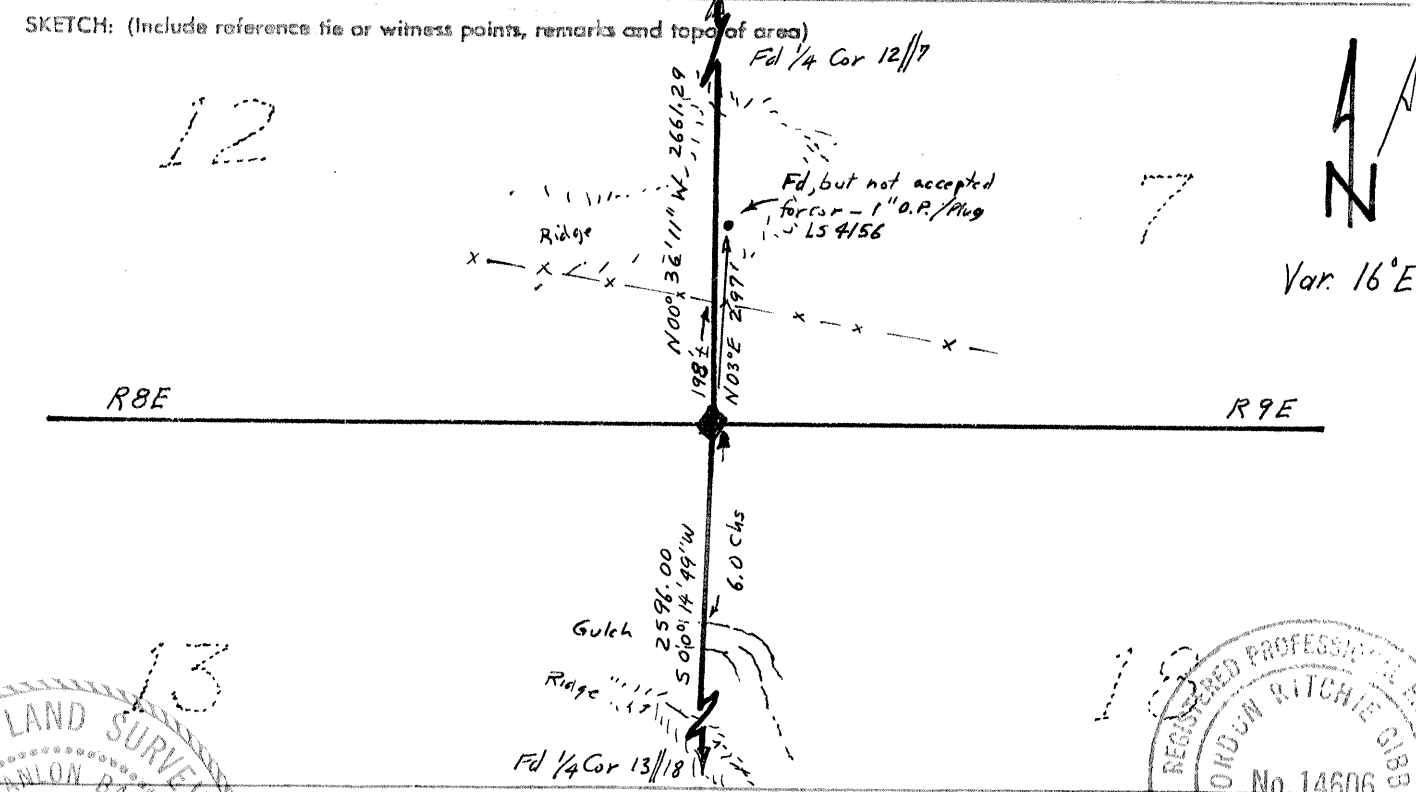
PHYSICAL DESCRIPTION OF CORNER FOUND; EVIDENCE AND METHOD USED TO IDENTIFY OR REESTABLISH
 Field research found no conclusive remains of this corner. It is my finding that this corner should be set on a 0° 51' angle point, 6.0 chains North of the Gulch in accordance Deputy Hermann's notes of 1880, between the found 1/4 corners to the north and south.

PHYSICAL DESCRIPTION OF MONUMENTS REBUILT OR PERPETUATED
 Set 2" C.I.P. in location stated above in conjunction with Record of Survey by Stoddard and Associates for Bill Marchese Et Al.

Pipe Stamped →

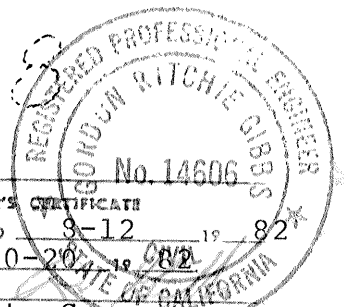


CALIFORNIA COORDINATE SYSTEM ORDER: FIRST SECOND THIRD
 STATIONS USED: NGS (USC & GS) STATE COUNTY OTHER STATION _____ STATION _____
 ZONE _____ ELEVATION 7720 ± NORTHINGS (Y) _____ EASTINGS (X) _____



SURVEYOR'S CERTIFICATE
 THIS CORNER RECORD WAS PREPARED BY ME OR UNDER MY DIRECTION IN CONFORMANCE WITH THE LAND SURVEYORS ACT ON July 16 1982
 SIGNED: Homer Banksh.
 License No. L S 3279

COUNTY SURVEYOR'S CERTIFICATE
 THE CORNER RECORD WAS RECEIVED 9-12 1982 AND EXAMINED AND FILED 10-20 1982
 BY: Stoddard
 TITLE: County Surveyor
 DOCUMENT No. 2792



The filing of this Corner Record was delayed pending a Field review September 28, 29 with the agreement of all parties.

This corner is not on the same location as corner "L" as shown and described on Parcel Map Vol. 45, Pgs. 45 & 46.

