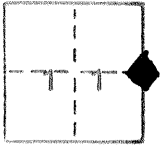


CORNER RECORD

COUNTY OF Merced T. 12 S R. 8E ~~XXXX~~ Mt. Diablo MERIDIAN CALIFORNIA

CORNER TYPE: GOVT. CORNER MEANDER RANCHO CONTROL OTHER

CORNER IDENTIFICATION — DATE OF VISIT June 6 1982



1/4 Corner 11 | 12

CORNER — LEFT AS FOUND FOUND AND TAGGED REESTABLISHED OBLITERATED CORNER REBUILT

PHYSICAL DESCRIPTION OF CORNER FOUND; EVIDENCE AND METHOD USED TO IDENTIFY OR REESTABLISH

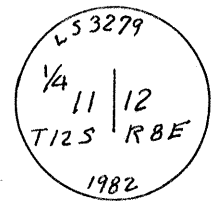
Found topog. location $\frac{1}{2}$ mile south of Sect. Cor. 1,2,11,&12 and measured 4.15 chs. from arroyo, and found original rock mound. (Rocks in a circle around an old post hole.)

This found rock mound is identical in character to the one we found one mile to the west.

PHYSICAL DESCRIPTION OF MONUMENTS REBUILT OR PERPETUATED

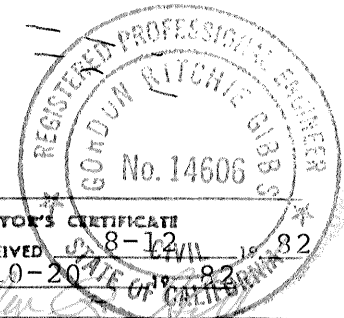
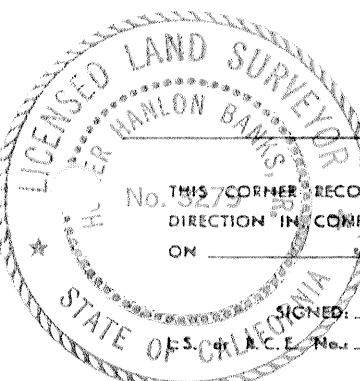
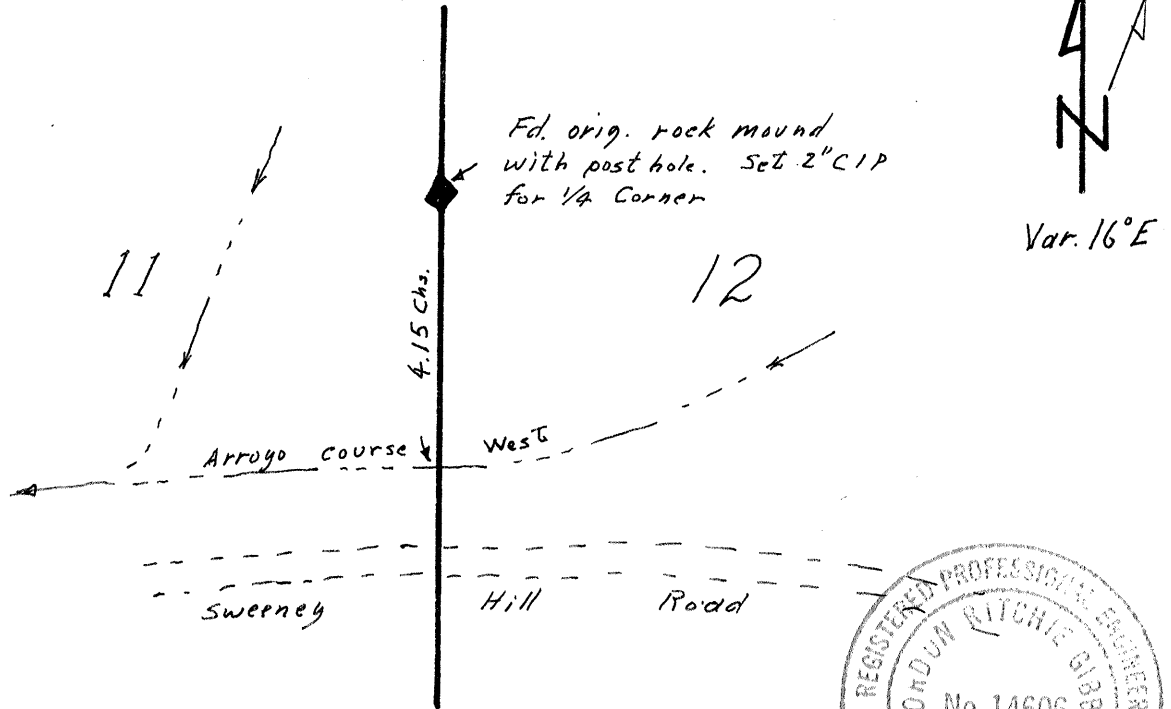
Set 2" C.I.P. in old post hole and rebuilt rock mound.

Stamped →



CALIFORNIA COORDINATE SYSTEM ORDER: FIRST SECOND THIRD
 STATIONS USED: NGS (USC & GS) STATE COUNTY OTHER STATION _____ STATION _____
 ZONE _____ ELEVATION 1580 + NORTHINGS (Y) _____ EASTINGS (X) _____

SKETCH: (Include reference tie or witness points, remarks and topo of area)



SURVEYOR'S CERTIFICATE
 THIS CORNER RECORD WAS PREPARED BY ME OR UNDER MY DIRECTION IN CONFORMANCE WITH THE LAND SURVEYORS ACT ON June 22, 1982
 SIGNED: Homer Banks Jr.
 L.S. of C.E. No. L S 3279

COUNTY SURVEYOR'S CERTIFICATE
 THE CORNER RECORD WAS RECEIVED 8-12 1982 AND EXAMINED AND FILED 10-20 1982
 BY: [Signature]
 TITLE: County Surveyor
 DOCUMENT No. 2792A

SEAL

STATEMENT ON BACK OF SHEET

YES NO

The filing of this Corner Record was delayed pending a Field review September 28, 29 with the agreement of all parties.

This corner is not on the same location as corner "G" as shown and described on Parcel Map Vol. 45, Pgs. 45 & 46.

