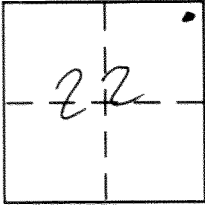


CORNER RECORD

Document Number 2724-AA

City of _____ County of Merced, California

Brief Legal Description Southwest Corner of Olive Avenue and Kibby Road



7/14

CORNER TYPE

Government Corner Control
Meander Property
Rancho Other
Date of Survey October 3, 2012

COORDINATES (Optional)

N. _____
E. _____
Zone _____ NAD27 NAD83
NAD83 Epoch _____
Elev. _____
Vert. Datum: NGVD29 NAVD88
Meas. Units: Metric Imperial

Corner - Left as found Found and tagged Established Reestablished Rebuilt

Identification and type of corner found: Evidence used to identify or procedure used to establish or reestablish the corner:

Found 2" OD. iron pipe, no tag, 20' south and 20' west of the Northeast corner of Section 22, T.7S, R.14E., per Merced County field book 315 pg 59. Tied out prior to reconstruction of Olive Avenue.

A description of the physical condition of the monument as found and as set or reset: See Page 2

SURVEYOR'S STATEMENT

This Corner Record was prepared by me or under my direction in conformance with

the Land Surveyor's Act on October 30, 2012

Signed [Signature] P.L.S or P.C.E. No. 4895



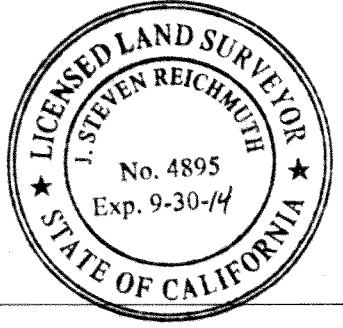
COUNTY SURVEYOR'S STATEMENT

This Corner Record was received October 30, 2012

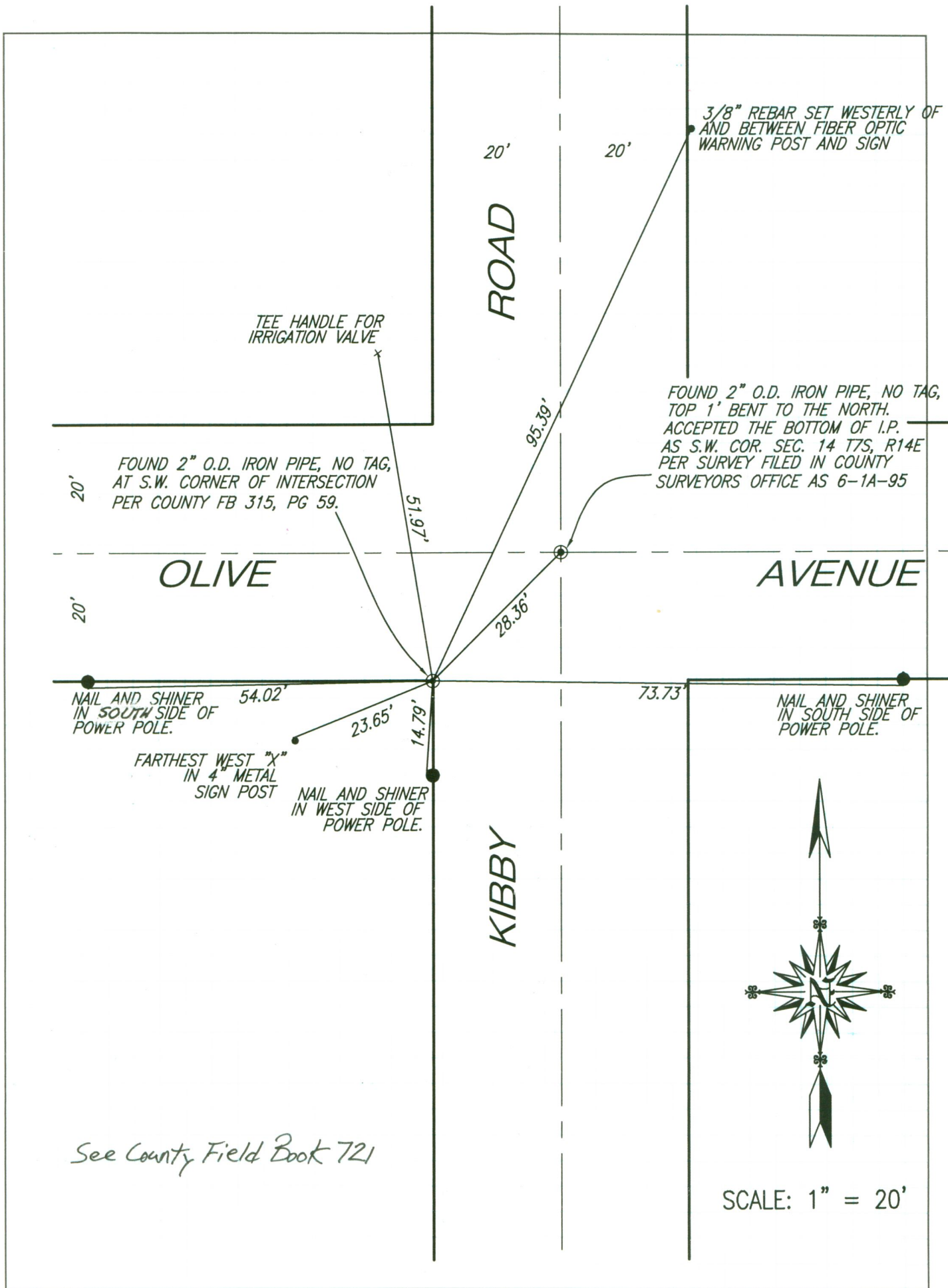
and examined and filed October 30, 2012

Signed [Signature] P.L.S or P.C.E. No. 4895

Title Acting County Surveyor



County Surveyor's Comment _____



3/8" REBAR SET WESTERLY OF AND BETWEEN FIBER OPTIC WARNING POST AND SIGN

TEE HANDLE FOR IRRIGATION VALVE

FOUND 2" O.D. IRON PIPE, NO TAG, AT S.W. CORNER OF INTERSECTION PER COUNTY FB 315, PG 59.

FOUND 2" O.D. IRON PIPE, NO TAG, TOP 1' BENT TO THE NORTH. ACCEPTED THE BOTTOM OF I.P. AS S.W. COR. SEC. 14 T7S, R14E PER SURVEY FILED IN COUNTY SURVEYORS OFFICE AS 6-1A-95

NAIL AND SHINER IN SOUTH SIDE OF POWER POLE. 54.02'

FARTHEST WEST "X" IN 4" METAL SIGN POST

NAIL AND SHINER IN WEST SIDE OF POWER POLE.

NAIL AND SHINER IN SOUTH SIDE OF POWER POLE.



SCALE: 1" = 20'

See County Field Book 721