

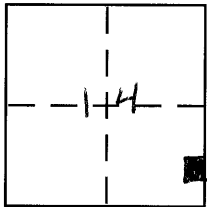
CORNER RECORD

Document Number 2723-J

City of _____

County of MERCED, California

Brief Legal Description LOT 57 & 58 PER 8 O.P. 36 M.C.R.



CORNER TYPE

Government Corner Control
Meander Property
Rancho Other
Date of Survey 12-8-08

COORDINATES (Optional)

N. _____
E. _____
Zone _____ NAD27 NAD83
NAD83 Epoch _____
Elev. _____
Vert. Datum: NGVD29 NAVD88
Meas. Units: Metric Imperial

Corner - Left as found Found and tagged Established Reestablished Rebuilt

Identification and type of corner found: Evidence used to identify or procedure used to establish or reestablish the corner:

SEE SKETCH

A description of the physical condition of the monument as found and as set or reset:

SEE SKETCH

SURVEYOR'S STATEMENT

This Corner Record was prepared by me or under my direction in conformance with the Land Surveyor's Act on January 29, 2009

Signed [Signature] P.L.S or R.C.E. No. _____



COUNTY SURVEYOR'S STATEMENT

This Corner Record was received January 30, 2009

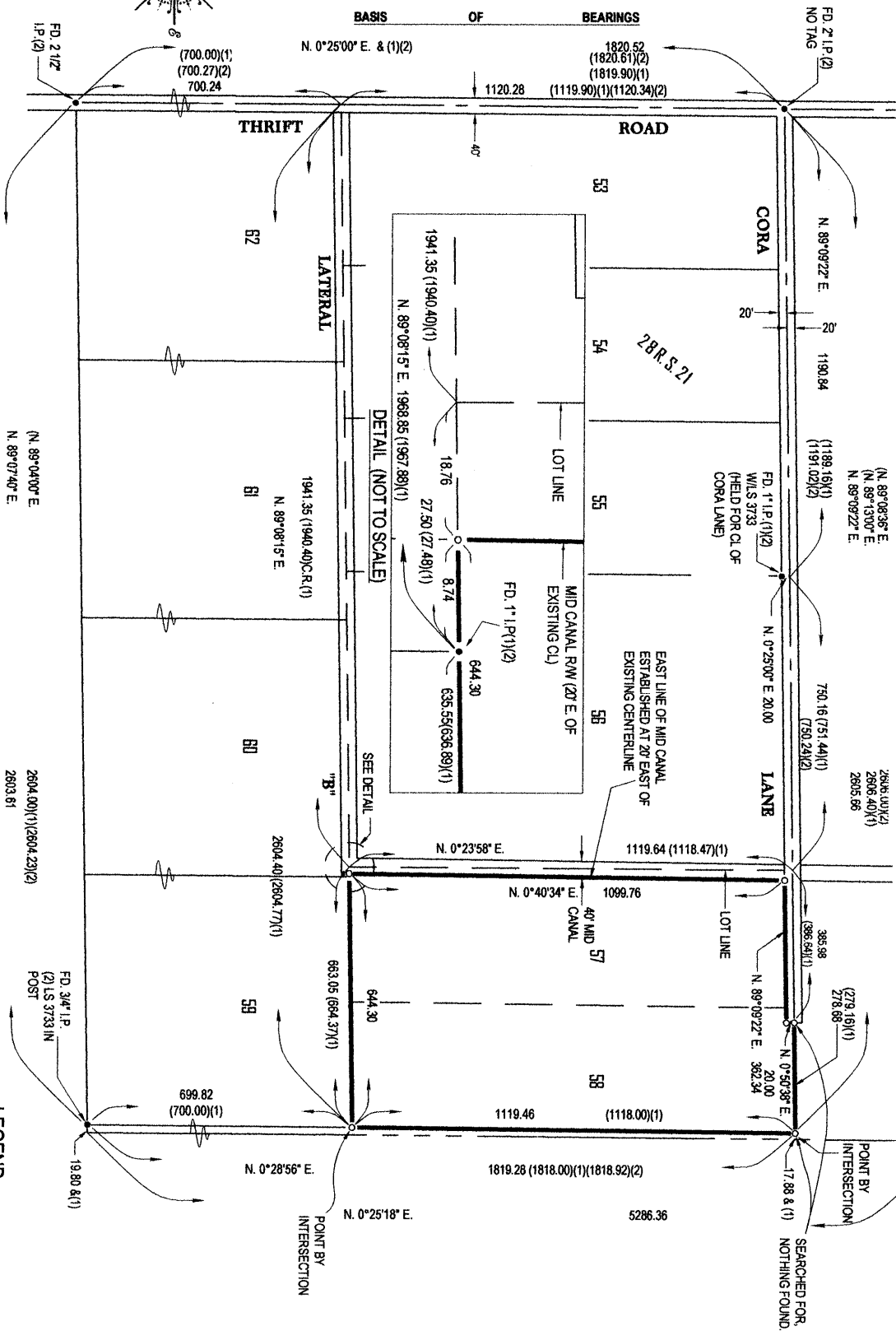
and examined and filed February 2, 2009

Signed [Signature] P.L.S or R.C.E. No. 4895

Title Dep. County Surveyor



County Surveyor's Comment _____



BASIS OF BEARINGS

N. 0°25'00" E. for the centerline of Thrift Road as shown on the map "Givens Mission Fig Tract" recorded in Volume 8 of Official Plats, at Page 36, Merced County Records.

- REFERENCES**
1. Givens Mission Fig Tract 8 O.P. 36 M.C.R.
 2. Record of Survey for John M. Toste and Mary C. Toste; 28 R.S. 31 M.C.R.
 3. Parcel Map for Bank of America, 63 P.M. 16 M.C.R.

C:\land Projects 2008\Randdy Foote Cor Reindwg\08054.dwg Date: 12/12/08 By: MSV