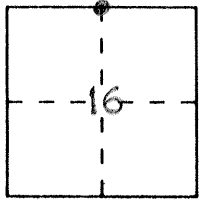


**CORNER RECORD**

Document Number 2703  
City of \_\_\_\_\_ County of Merced, California

Brief Legal Description 1/4 COR. between Section 9 and Section 16, T6S, R11E MDM  
S9



**CORNER TYPE**

Government Corner  Control   
Meander  Property   
Rancho  Other   
Date of Survey June 23, 1998

**COORDINATES (Optional)**

N. \_\_\_\_\_  
E. \_\_\_\_\_  
Zone \_\_\_\_\_ Datum \_\_\_\_\_  
Elev. \_\_\_\_\_

Corner — Left as found  Found and tagged  Established  Reestablished  Rebuilt

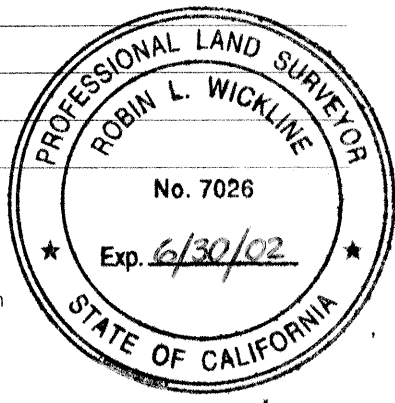
Identification and type of corner found: Evidence used to identify or procedure used to establish or reestablish the corner: found 2" IP with NAIL, NO TAG (down 1.1') NO REFERENCE

A description of the physical condition of the monument as found and as set or reset: badly rusted

**SURVEYOR'S STATEMENT**

This Corner Record was prepared by me or under my direction in conformance with the Land Surveyors' Act on JUNE 23, 1998

Signed Robin L. Wickline L.S. or R.C.E. Number LS 7026  
Expires 6/30/02



**COUNTY SURVEYOR'S STATEMENT**

This Corner Record was received JULY 20 1998 and examined and filed JULY 27 1998

Signed Roy L. Turney Title DEP. CO. SUR.



County Surveyor's Comment \_\_\_\_\_

SK 980084

**LEGEND:**

- FOUND 2" IP with nail, no tag, no ref. (down 1.1')
- SET concrete nail with brass tag "CAL TRANS" (flush in AK) as reference

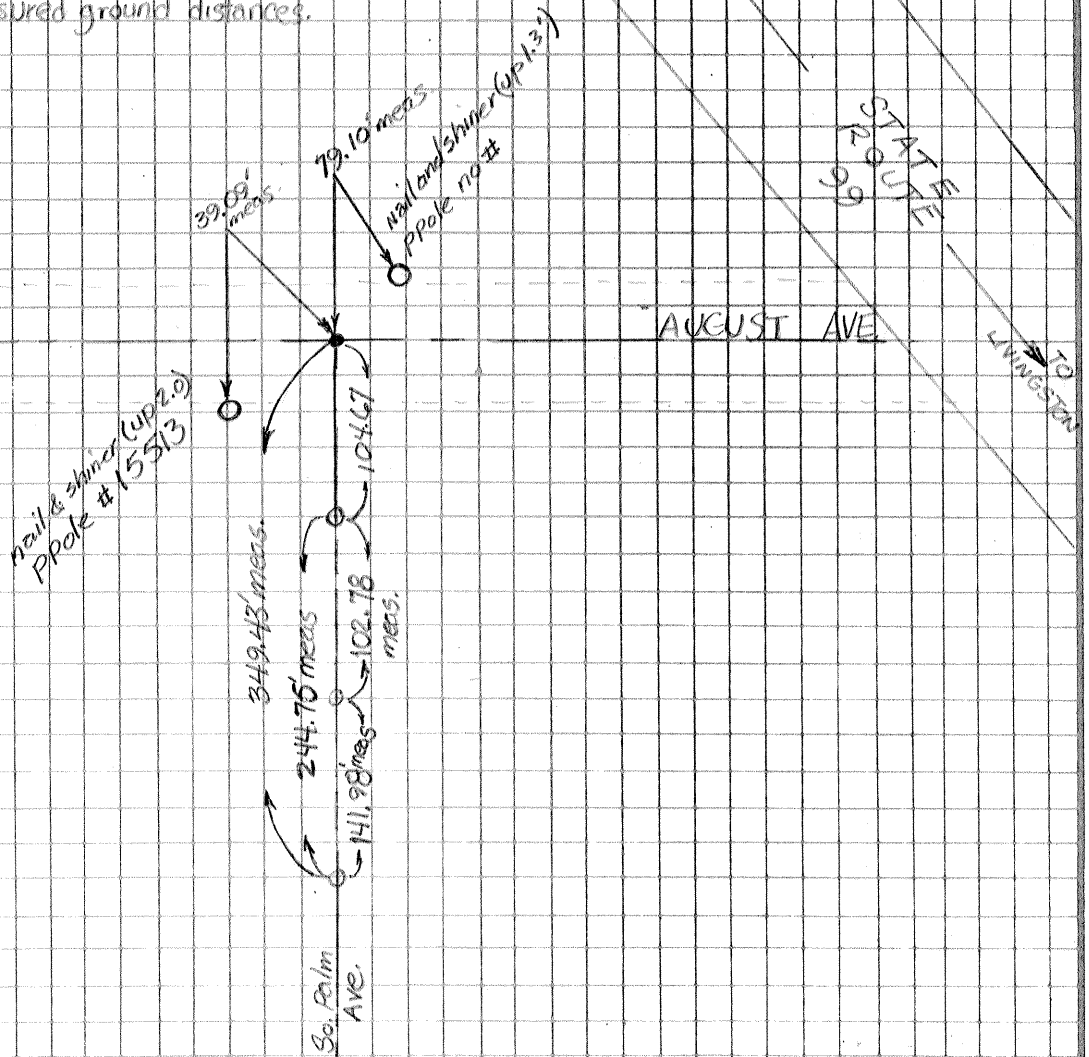
TGS, RILE

Section 9



NO SCALE

NOTE: All distances shown are measured ground distances.



Section 16