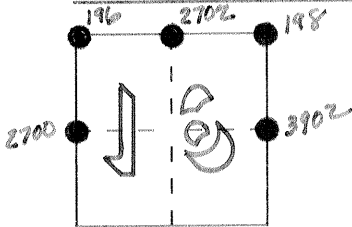


CORNER RECORD

Document Number 196, 198, 2700, 2702 & 3902

City of Unincorporated, Los Banos Area County of Merced, California

Brief Legal Description N 1/2 of NE 1/4 Section 16, T11S, R10E, MDB&M



CORNER TYPE

Government Corner Control
 Meander Property
 Rancho Other
 Date of Survey 2/29/94

COORDINATES (Optional)

N. _____
 E. _____
 Zone _____ Datum _____
 Elev. _____

Corner — Left as found Found and tagged Established Reestablished Rebuilt

Identification and type of corner found: Evidence used to identify or procedure used to establish or reestablish the corner:

NW - 1" I.P. Tag LS 5355 DN 0.8

NE 1/4 - 1" I.P. Tag LS 5355 DN 0.9

NE - 2" I.P. No Tag In Mon. Well

E 1/4 - 1" I.P. Tag Illegible Flush

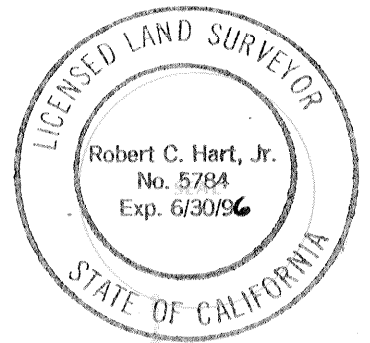
W 1/4 - 5/8" I.R. Tag LS 4156 DN 0.5

A description of the physical condition of the monument as found and as set or reset: _____

SURVEYOR'S STATEMENT

This Corner Record was prepared by me or under my direction in conformance with the Land Surveyors' Act on April 11, 1994.

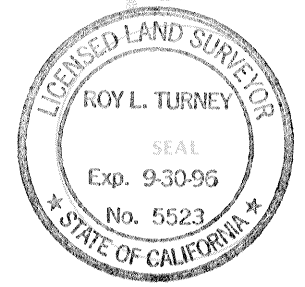
Signed Robert C. Hart, Jr. L.S. or ~~XXX~~ Number 5784



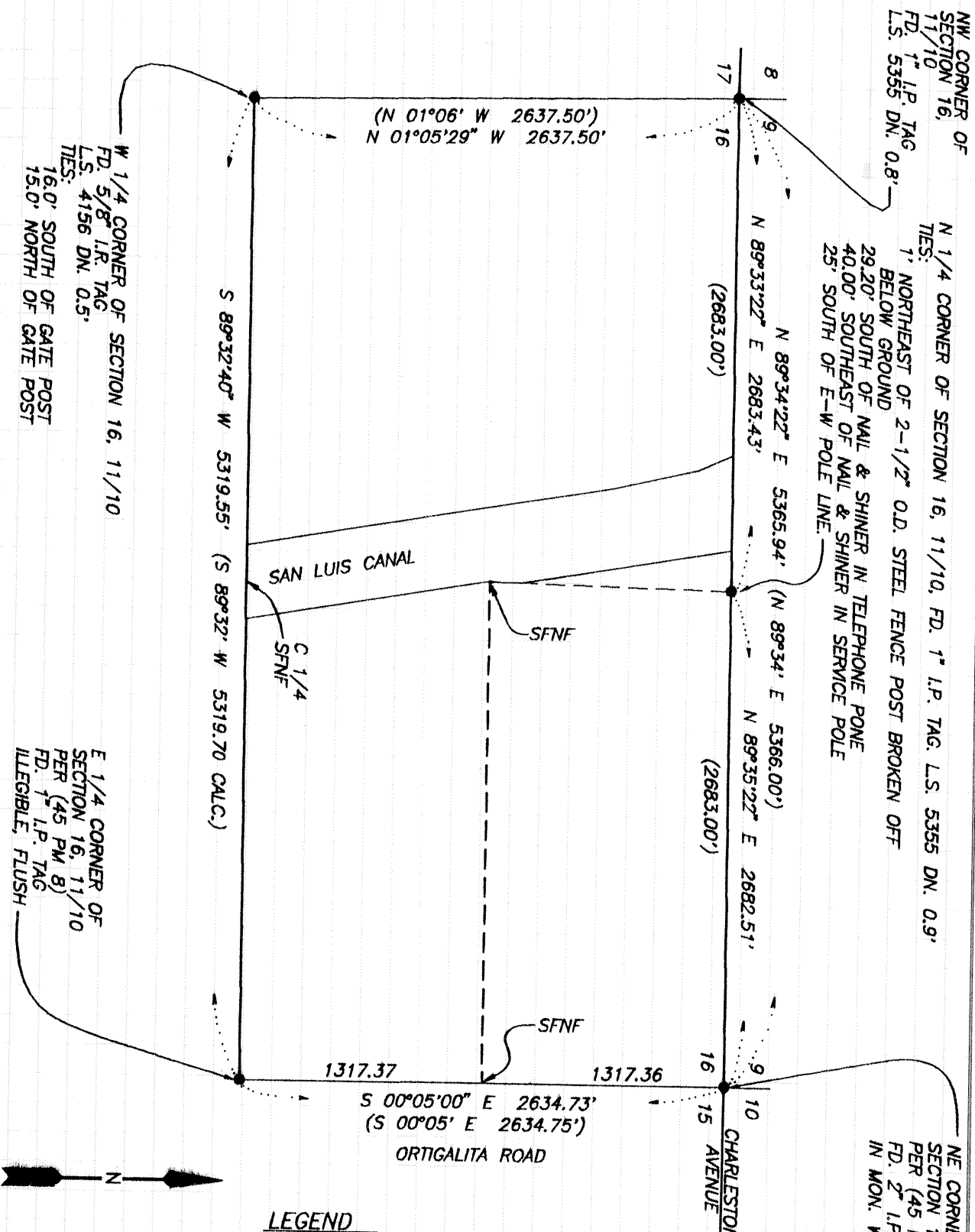
COUNTY SURVEYOR'S STATEMENT

This Corner Record was received APRIL 21 1994 and examined and filed APRIL 22 1994.

Signed Roy L. Turney Title Dep. Co. Sur.



County Surveyor's Comment _____



NW CORNER OF SECTION 16, 11/10
 FD. 1st I.P. TAG L.S. 5355 DN. 0.8'

N 1/4 CORNER OF SECTION 16, 11/10, FD. 1st I.P. TAG. L.S. 5355 DN. 0.9'
 TIES:
 1' NORTHEAST OF 2-1/2" O.D. STEEL FENCE POST BROKEN OFF BELOW GROUND
 29.20' SOUTH OF NAIL & SHINER IN TELEPHONE PONE
 40.00' SOUTHEAST OF NAIL & SHINER IN SERVICE POLE
 25' SOUTH OF E-W POLE LINE.

NE CORNER OF SECTION 16, 11/10
 PER (45 PM 8)
 FD. 2nd I.P. NO TAG IN MON. WELL

W 1/4 CORNER OF SECTION 16, 11/10
 FD. 5/8" I.R. TAG L.S. 4156 DN. 0.5'
 TIES:
 16.0' SOUTH OF GATE POST
 15.0' NORTH OF GATE POST

E 1/4 CORNER OF SECTION 16, 11/10
 PER (45 PM 8)
 FD. 1st I.P. TAG ILEGIBLE, FLUSH

(N 01°06' W 2637.50')
 N 01°05'29" W 2637.50'

S 89°32'40" W 5319.55' (S 89°32' W 5319.70 CALC.)

N 89°34'22" E 5365.94' (N 89°34' E 5366.00')
 N 89°35'22" E 2682.51'
 (2683.00')
 (2683.00')

1317.37
 S 00°05'00" E 2634.73'
 (S 00°05' E 2634.75')
 ORTIGALITA ROAD

LEGEND
 () RECORD PER MILLER & LUX SUBDIVISION OF SECT. 16 T 11 S, R 10 E, M.D.M., MERCED COUNTY.
 SFNF SEARCHED FOR NOTHING FOUND

