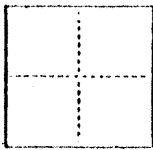


CORNER RECORD

CC. OF MERCED T. 7 S R. 10 E MDBE MERIDIAN CALIFORNIA
 CORNER TYPE: GOVT. CORNER MEANDER RANCHO CONTROL OTHER
 CORNER IDENTIFICATION — DATE OF VISIT April 10 1988



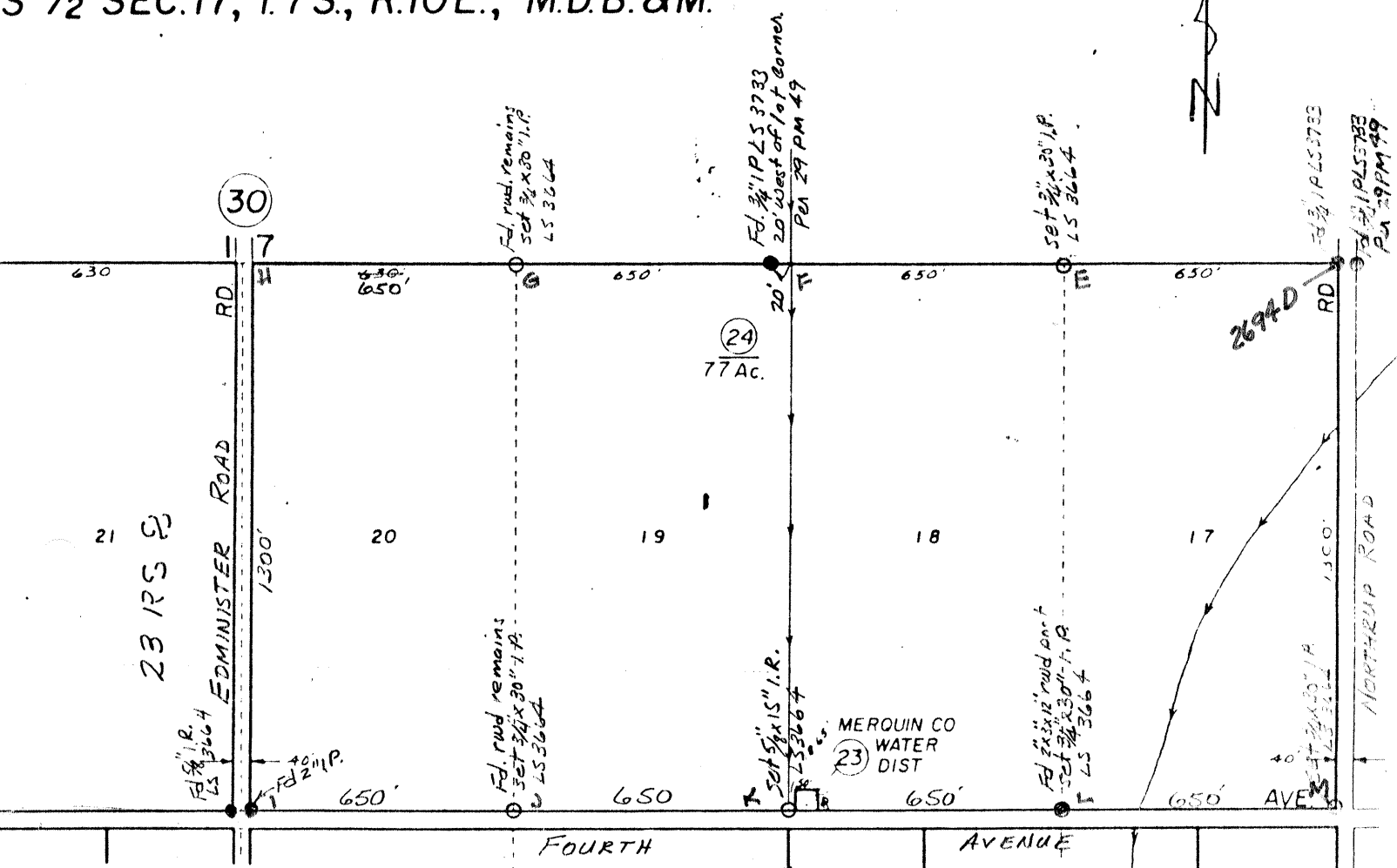
CORNER — LEFT AS FOUND FOUND AND TAGGED REESTABLISHED OBLITERATED CORNER REBUILT

PHYSICAL DESCRIPTION OF CORNER FOUND; EVIDENCE AND METHOD USED TO IDENTIFY OR REESTABLISH
Redwood post remains as shown on stevinson colony No. 9, recorded in Volume 3 of Maps, Page 40, Merced County Records.

PHYSICAL DESCRIPTION OF MONUMENTS REBUILT OR PERPETUATED

CALIFORNIA COORDINATE SYSTEM ORDER: FIRST SECOND THIRD
 STATIONS USED: NGS (USC & GS) STATE COUNTY OTHER STATION _____ STATION _____
 ZONE _____ ELEVATION _____ NORTHINGS (Y) _____ EASTINGS (X) _____

S 1/2 SEC. 17, T. 7 S., R. 10 E., M. D. B. & M.



SURVEYOR'S CERTIFICATE

THIS CORNER RECORD WAS PREPARED BY ME OR UNDER MY DIRECTION IN CONFORMANCE WITH THE LAND SURVEYORS ACT OF 1907.
 G.D. APRIL 10, 1988

SIGNED: *John E. Coplantz*

L.S. or F.C.E. No.: L.S. 3664



COUNTY SURVEYOR'S CERTIFICATE

THE CORNER RECORD WAS RECEIVED _____ 19____ AND EXAMINED AND FILED APRIL 20, 1988

BY: *Ray James*

TITLE: *Deputy County Surveyor*

DOCUMENT No. 2694 D

STATEMENT ON BACK OF SHEET

YES NO