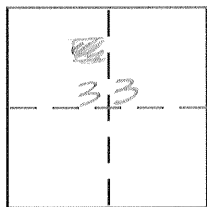


**CORNER RECORD**

Document Number 2654-A

City of \_\_\_\_\_ County of Merced, California

Brief Legal Description Lot 31-Miller & Loy Sub., Section 33 10/12



**CORNER TYPE**

Government Corner  Control   
Meander  Property   
Rancho  Other   
Date of Survey 5-1-05

**COORDINATES (Optional)**

N. \_\_\_\_\_  
E. \_\_\_\_\_  
Zone \_\_\_\_\_ NAD27  NAD83   
NAD83 Epoch \_\_\_\_\_  
Elev. \_\_\_\_\_  
Vert. Datum: NGVD29  NAVD88   
Meas. Units: Metric  Imperial

Corner -- Left as found  Found and tagged  Established  Reestablished  Rebuilt

Identification and type of corner found: Evidence used to identify or procedure used to establish or reestablish the corner:

See sketch

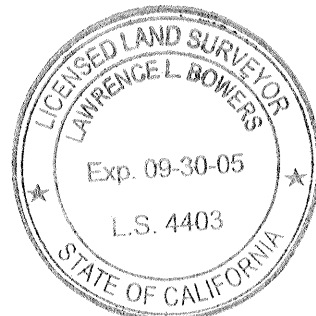
A description of the physical condition of the monument as found and as set or reset:

See sketch

**SURVEYOR'S STATEMENT**

This Corner Record was prepared by me or under my direction in conformance with the Land Surveyor's Act on 7-11-05

Signed [Signature] P.L.S or R.C.E. No. \_\_\_\_\_



**COUNTY SURVEYOR'S STATEMENT**

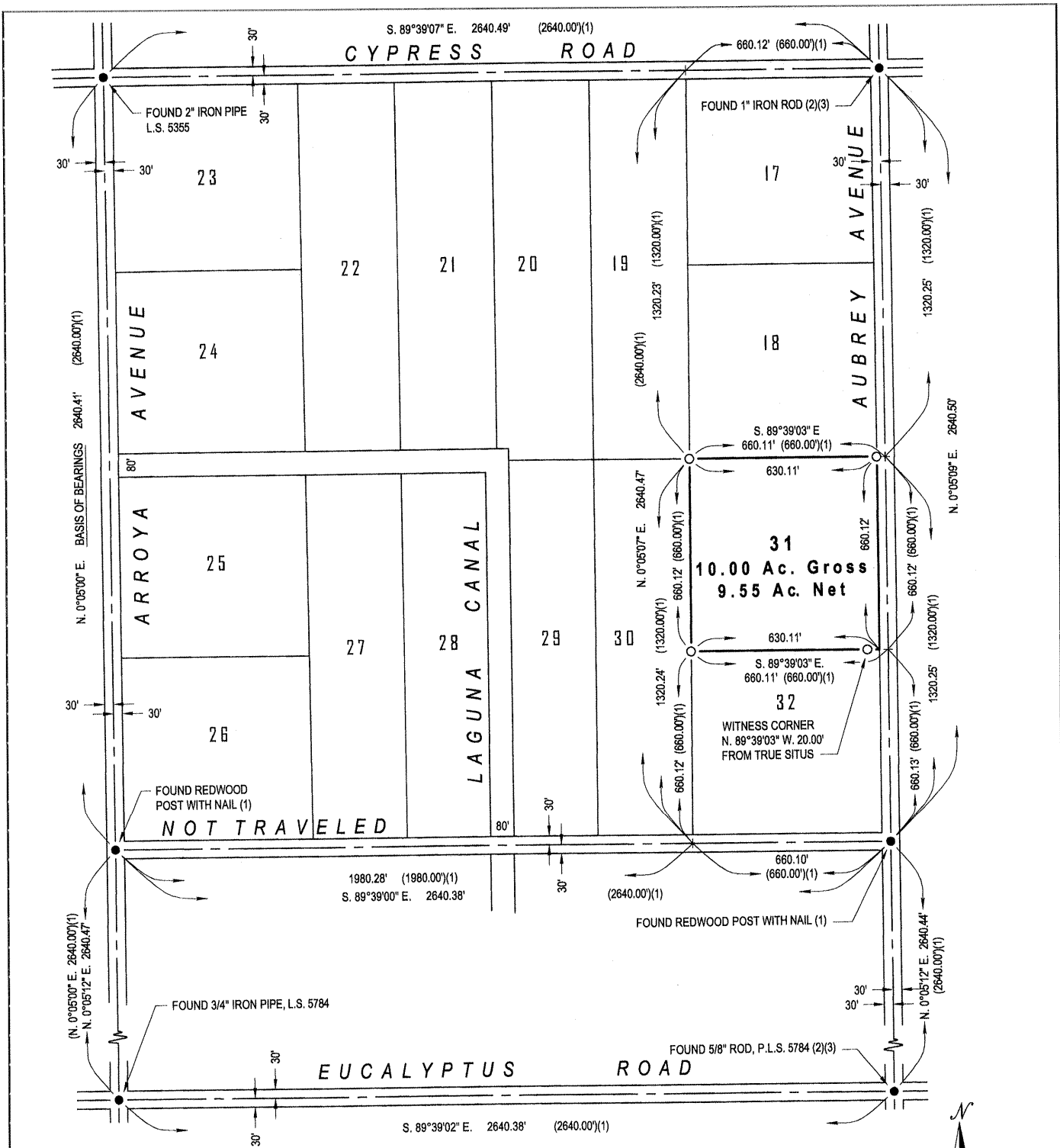
This Corner Record was received July 12, 2005 and examined and filed July 13, 2005

Signed [Signature] P.L.S or R.C.E. No. 4895

Title Deputy County Surveyor

County Surveyor's Comment \_\_\_\_\_





**Legend:**

- Found as noted
- Set 3/4" iron pipe, L.S. 4403

**References:**

- (1) Map of Miller & Lux Subdivision, 3 O.P. 22, M.C.R.
- (2) Record of Survey for Gilbert J. Arena and Virginia A. Arena, 35 R.S. 1, M.C.R.
- (3) Parcel Map for the Arena Family Trust, 90 P.M. 7, M.C.R.

**Basis of Bearings:**

N. 0°05'00" E. for the centerline of Arroya Avenue, as shown on "Miller & Lux Subdivision", Volume 3, Official Plats, Page 22, Merced County Records.

