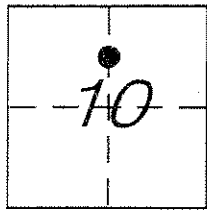


CORNER RECORD

Document Number 2653-KK

City of \_\_\_\_\_ County of MERCED, California

Brief Legal Description THE S.E. CORNER OF 1.0 ACRE PARCEL SHOWN IN LOT 18, 2 O.P. 38, PER 4 R.S. 42.



11  
12

CORNER TYPE

- Government Corner  Control
- Meander  Property
- Rancho  Other
- Date of Survey MAY 9, 2013

COORDINATES (Optional)

N. \_\_\_\_\_  
 E. \_\_\_\_\_  
 Zone \_\_\_\_\_ NAD27  NAD83   
 NAD83 Epoch \_\_\_\_\_  
 Elev. \_\_\_\_\_  
 Vert. Datum: NGVD29  NAVD88   
 Meas. Units: Metric  Imperial

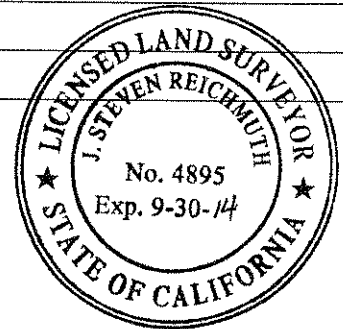
Corner - Left as found  Found and tagged  Established  Reestablished  Rebuilt

Identification and type of corner found: Evidence used to identify or procedure used to establish or reestablish the corner:  
FOUND 1" I.D. IRON PIPE NO TAG, FOR S.E. CORNER OF 1.0 ACRE PARCEL SHOWN IN LOT 18, 2 O.P. 38, PER  
4 R.S. 42. MONUMENT TIED OUT PRIOR TO OVERLAY OF REYNOLDS AVENUE.

A description of the physical condition of the monument as found and as set or reset: SEE PAGE 2

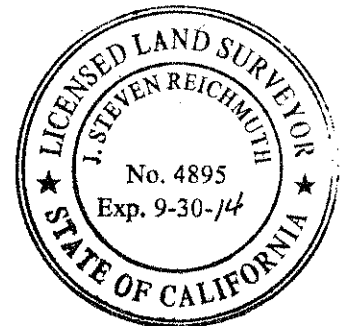
SURVEYOR'S STATEMENT

This Corner Record was prepared by me or under my direction in conformance with  
 the Land Surveyor's Act on Sept. 30, 2013  
 Signed [Signature] P.L.S or ~~E.~~ No. 4895



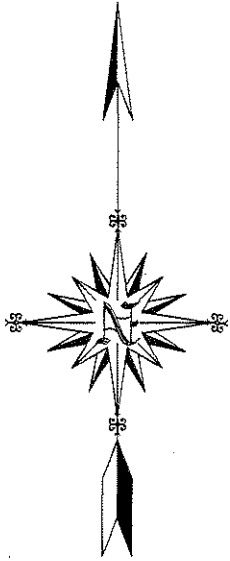
COUNTY SURVEYOR'S STATEMENT

This Corner Record was received Sept. 30, 2013  
 and examined and filed Sept. 30, 2013  
 Signed [Signature] P.L.S or ~~E.~~ No. 4895  
 Title County Surveyor

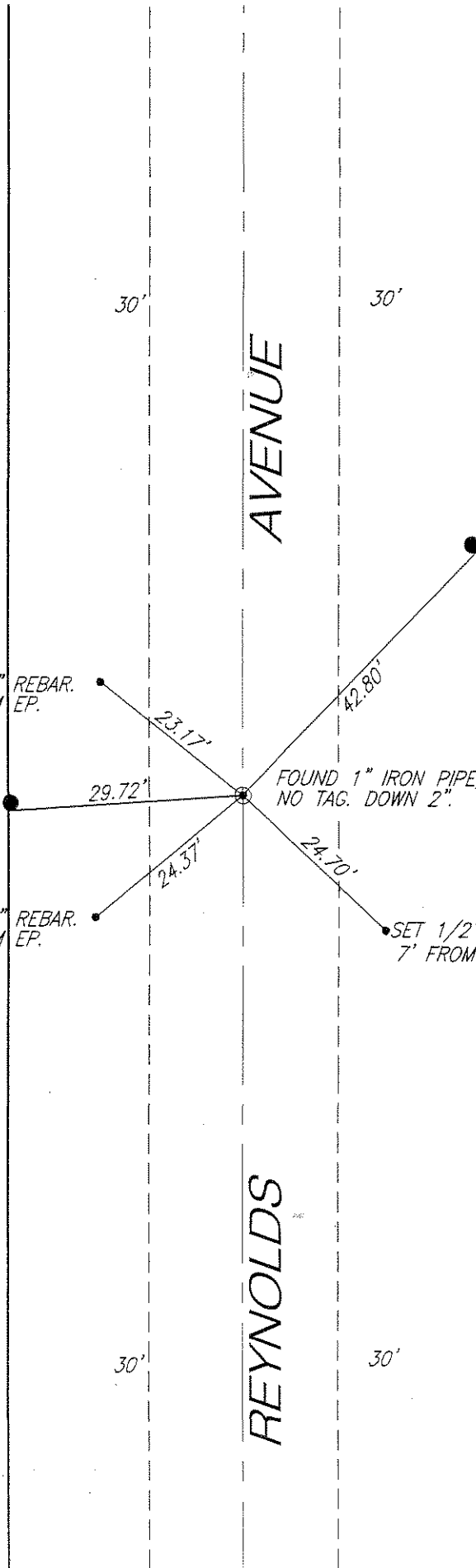


County Surveyor's Comment \_\_\_\_\_

C.R. #2653-KK



SCALE: 1" = 20'



AVENUE

REYNOLDS

30'

30'

30'

30'

SET 3/8" REBAR.  
9' FROM EP.

SET NAIL AND SHINER  
ON SOUTH SIDE OF  
1.33' DIA. FENCE POST.

SET 3/8" REBAR.  
6.5' FROM EP.

SET 1/2" REBAR  
7' FROM EP.

SET NAIL AND SHINER  
ON S.E. SIDE OF  
POWER POLE.

FOUND 1" IRON PIPE,  
NO TAG. DOWN 2".

23.17'

29.72'

24.37'

24.70'

42.80'