

No 263

CORNER RECORD

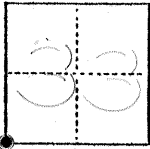
(for use only)

OK

COUNTY OF MERCED T. 23 S R. 10 E M.D. 89 MERIDIAN CALIFORNIA

CORNER TYPE: GOV'T. CORNER MEANDER RANCHO CONTROL OTHER

CORNER IDENTIFICATION — DATE OF VISIT NOV. 18 1975



SOUTH WEST CORNER OF SECTION 33
SECTION CORNER T. 23, R. 10 E

CORNER — LEFT AS FOUND FOUND AND TAGGED REESTABLISHED OBLITERATED CORNER REBUILT

PHYSICAL DESCRIPTION OF CORNER FOUND; EVIDENCE AND METHOD USED TO IDENTIFY OR REESTABLISH

FD. 3"x3" POST. USED SWING TIES IN BK 51 PA 38 MERCED COUNTY PUBLIC WORKS Dept. ROAD DIVISION

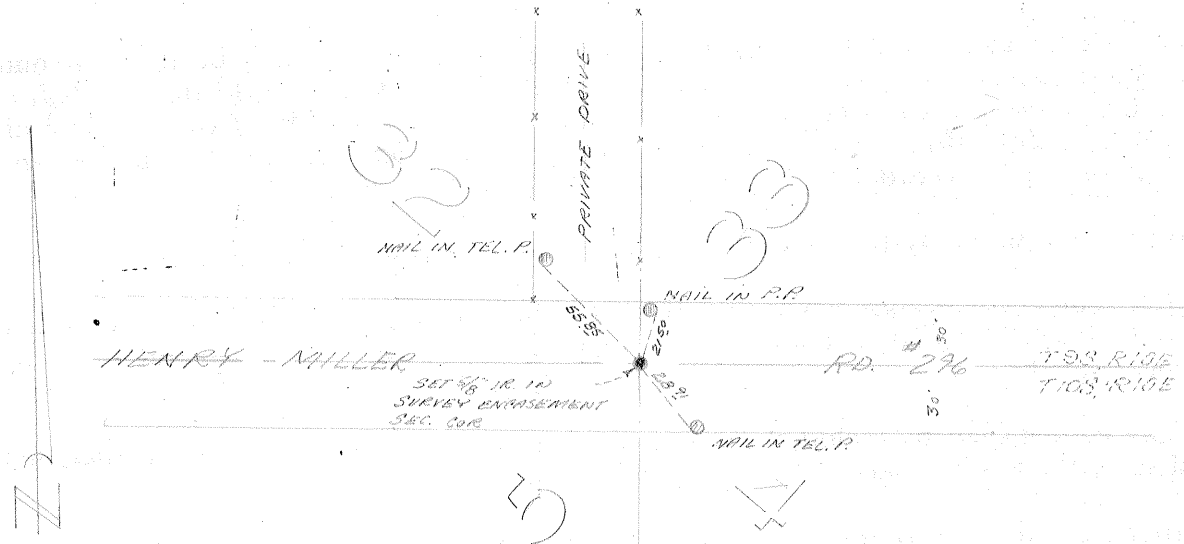
PHYSICAL DESCRIPTION OF MONUMENTS REBUILT OR PERPETUATED

SET 4/8" IR. IN 3"x3" POST WITH TAG R.C.E. 13,760 IN SURVEY ENCASEMENT

CALIFORNIA COORDINATE SYSTEM ORDER: FIRST SECOND THIRD
STATIONS USED: NGS (USC & GS) STATE COUNTY OTHER STATION _____ STATION _____
ZONE _____ ELEVATION _____ NORTHINGS (Y) _____ EASTINGS (X) _____

(Fold)

SKETCH: (Include reference tie or witness points, remarks and topo of area)



SURVEYOR'S CERTIFICATE

THIS CORNER RECORD WAS PREPARED BY ME OR UNDER MY DIRECTION IN CONFORMANCE WITH THE LAND SURVEYORS ACT ON _____ 19____.

SIGNED: _____

L.S. or R.C.E. No.: _____

SEAL

COUNTY SURVEYOR'S CERTIFICATE

THE CORNER RECORD WAS RECEIVED _____ 19____ AND EXAMINED AND FILED _____ 19____.

BY: _____

TITLE: _____

DOCUMENT No. 2633

STATEMENT ON BACK OF SHEET

YES NO