

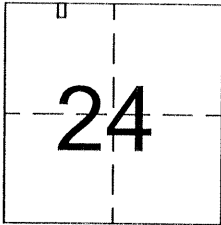
CORNER RECORD

Document Number 2612-C

City of Los Banos

County of Merced, California

Brief Legal Discription Lot 196 of College Greens No. 2 Vol. 43 Pages 43-47 M.C. R.



CORNER TYPE

Government Corner Control
Meander Property
Rancho Other
Date of Survey October 7, 2003

COORDINATES (Optional)

N. _____
E. _____
Zone _____ NAD27 NAD83
NAD83 Epoch _____
Elev. _____
Vert. Datum: NGVD29 NAVD88
Meas. Units: Metric Imperial

Corner - Left as found Found and tagged Established Reestablished Rebuilt

Identification and type of corner found: Evidence used to identify or procedure used to establish or reestablish the corner: FOUND 1" IRON PIPE TAGGED LS 4876 PER VOL 43 OP 43-47

A description of the physical condition of the monument as found and as set or reset: _____

SET NAIL AND TAG LS 5784 IN TOP OF FENCE POST AT THE NORTHWEST AND NORTHEAST CORNER. SET 1 1/4" IRON PIPE TAGGED PLS 5784 AT SOUTHWEST CORNER

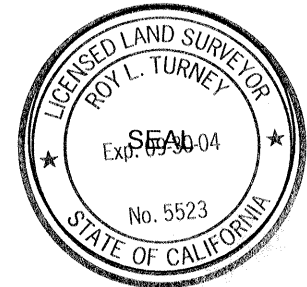
SURVEYOR'S STATEMENT

This Corner Record was prepared by me or under my direction in conformance with the Land Surveyor's Act on OCTOBER 9 2003
Signed Robert C Hart P.L.S. or ~~R.C.E.~~ No. P.L.S. 5784

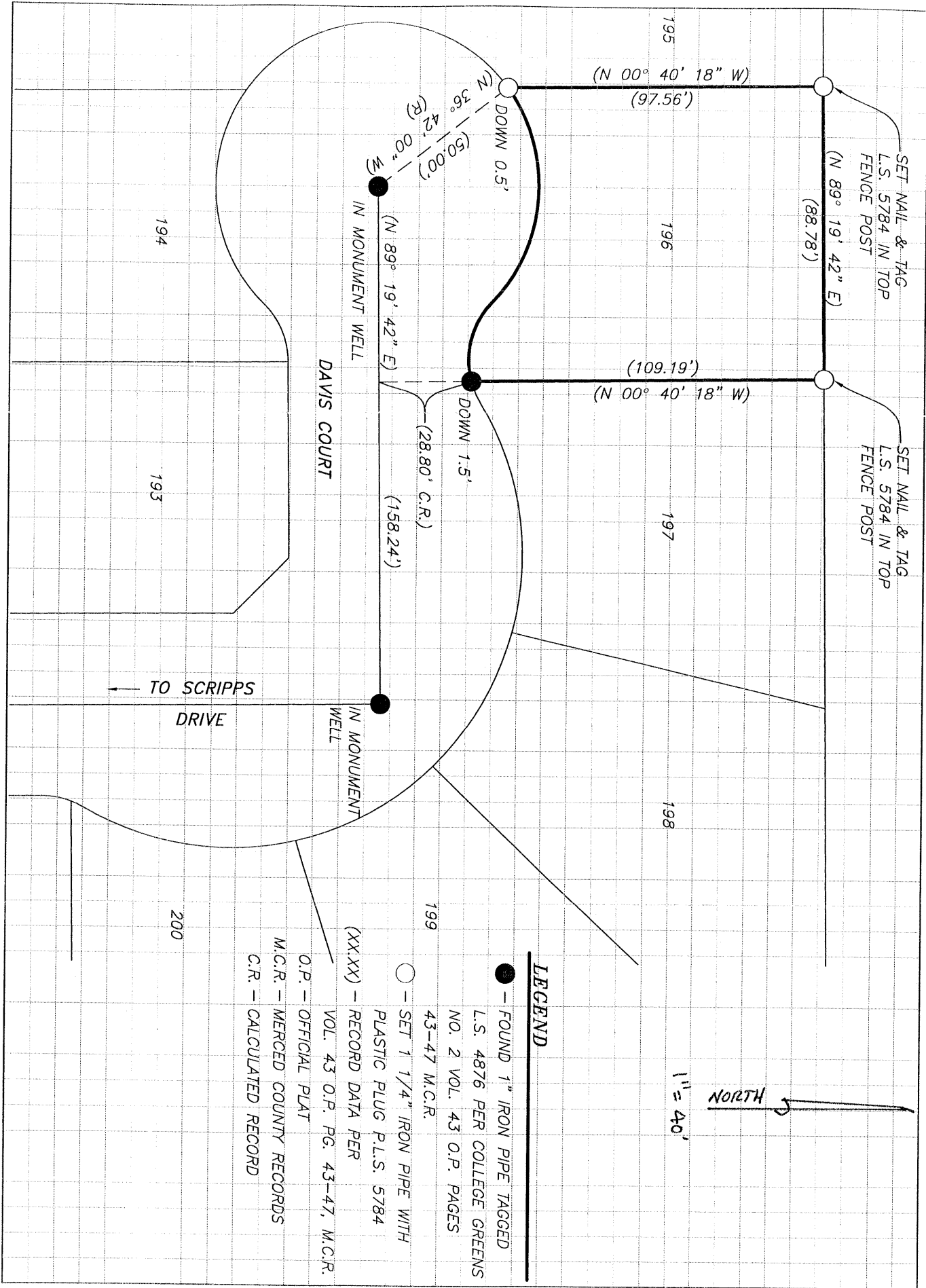


COUNTY SURVEYOR'S STATEMENT

This Corner Record was received October 14, 2003
and examined and filed NOVEMBER 6, 2003
Signed Roy L. Turney P.L.S. or R.C.E. No. 5523
Title Deputy Surveyor



County Surveyor's Comment _____



LEGEND

- - FOUND 1" IRON PIPE TAGGED
L.S. 4876 PER COLLEGE GREENS
NO. 2 VOL. 43 O.P. PAGES
43-47 M.C.R.
- - SET 1 1/4" IRON PIPE WITH
PLASTIC PLUG P.L.S. 5784
(XX.XX) - RECORD DATA PER
VOL. 43 O.P. PG. 43-47, M.C.R.
- O.P. - OFFICIAL PLAT
- M.C.R. - MERCED COUNTY RECORDS
- C.R. - CALCULATED RECORD

NORTH

1" = 40'