

CORNER RECORD

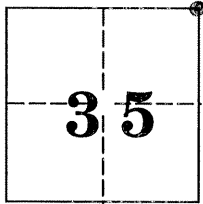
DPD-3011A (Rev. 3/98) CT# 7541-4554-2

Document Number 2588

City of _____

County of Merced, California

Brief Legal Description Northeast corner of Section 35, T7S, R12E, MDB & M. Bailey Avenue at Applegate Road



CORNER TYPE

COORDINATES(Optional)

Government Corner Control
Meander Property
Rancho Other

N. _____
E. _____
Zone _____ NAD27 NAD83
NAD83 Epoch _____
Elevation _____
Vert. Datum: NGVD29 NAV88
Meas. Units: Metric Imperial

Date of Survey June 3, 2000

Corner - Left as found Found and tagged Established Reestablished Rebuilt

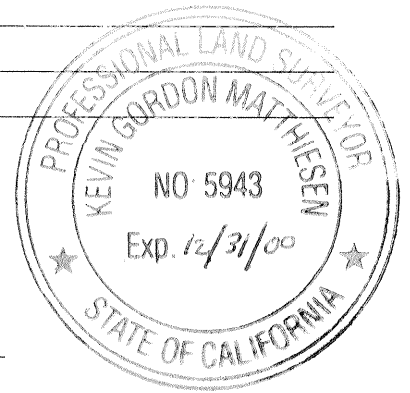
Identification and type of corner found: Evidence used to identify or procedure used to establish or reestablish the corner:
Found 3/4 inch iron pipe with red plug. Tag illegible. Down 0.3 feet.
Pipe found with remaining County ties and pipe locator.
Found per Record of Survey filed in Merced County Records Volume 23 page 45, December 19, 1988, as SE Cor. Sec. 26

A description of the physical condition of the monument as found and as set or reset: _____
Left as found. Made new ties. (See page 2)

SURVEYOR'S STATEMENT

This Corner Record was prepared by me or under my direction in conformance with the Land Surveyor's Act on June 15, 2000.

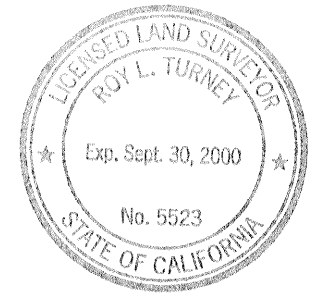
Signed Kevin Gordon Matthiesen P.L.S. Number 5943 - Expires 12/31/00
For the State of California
Department of Transportation



COUNTY SURVEYOR'S STATEMENT

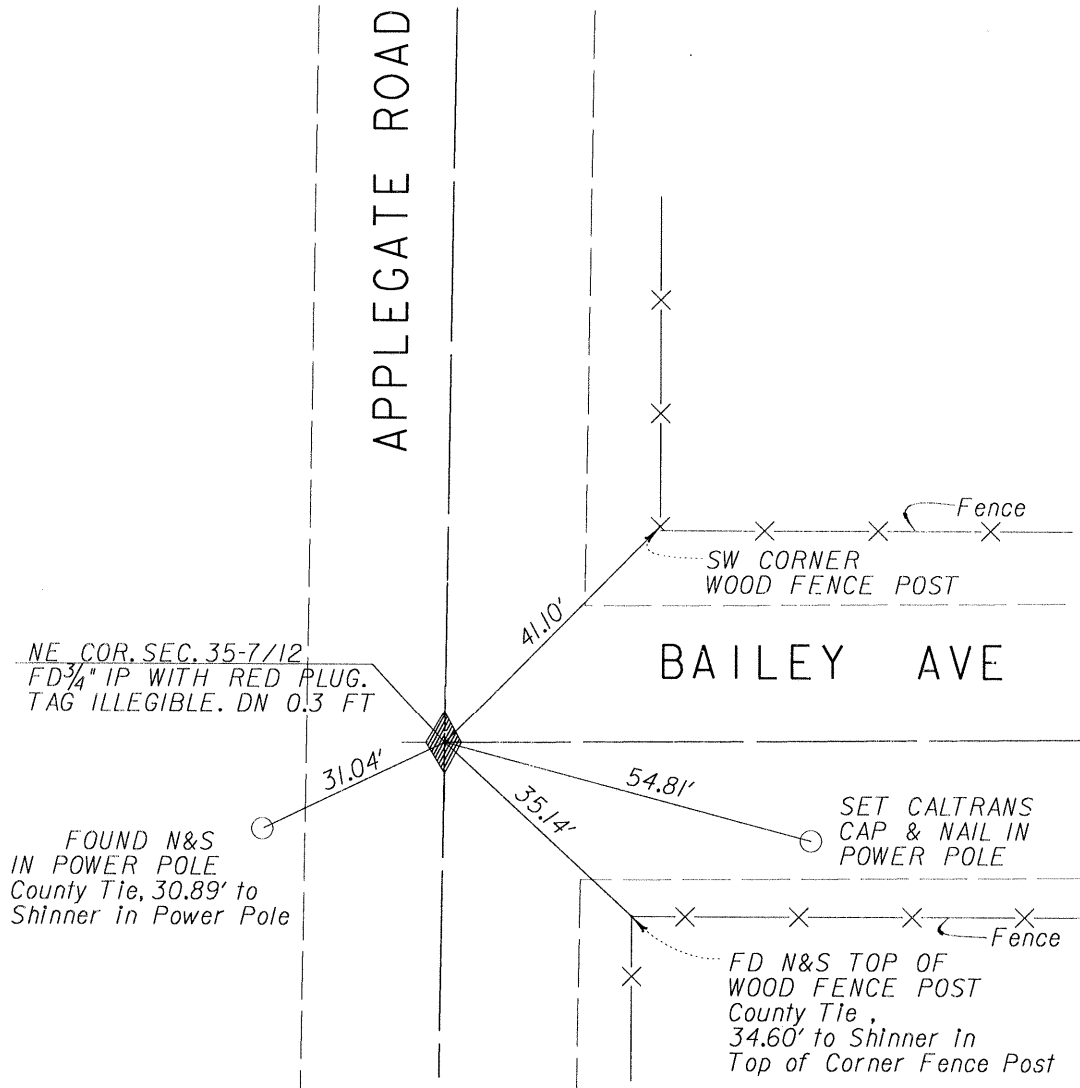
This Corner Record was received JULY 3, 2000 and examined and filed JULY 21, 2000.

Signed Roy L. Turney P.L.S. or R.C.E. Number 5523
Title DEP. CO. SURVEYOR



County Surveyor's Comment _____

NORTHEAST CORNER SECTION 35 T7S, R12E, M. D. B. & M.



NO SCALE