

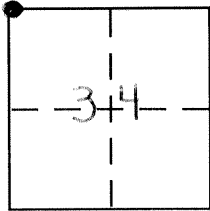
**CORNER RECORD**

Document Number 2571

City of \_\_\_\_\_

County of MERCED, California

Brief Legal Description N.W. SECTION CORNER, SECT. 34, T.9S., R.13E.



**CORNER TYPE**

Government Corner  Control   
Meander  Property   
Rancho  Other   
Date of Survey Nov. 1999

**COORDINATES (Optional)**

N. \_\_\_\_\_  
E. \_\_\_\_\_  
Zone \_\_\_\_\_ NAD27  NAD83   
NAD83 Epoch \_\_\_\_\_  
Elev. \_\_\_\_\_  
Vert. Datum: NGVD29  NAVD88   
Meas. Units: Metric  Imperial

Corner - Left as found  Found and tagged  Established  Reestablished  Rebuilt

Identification and type of corner found: Evidence used to identify or procedure used to establish or reestablish the corner:

Fd. 5/8" IRON ROD IN SURVEY ENCASUREMENT (NO LID), NO TAG

A description of the physical condition of the monument as found and as set or reset:

RESET SURVEY ENCASUREMENT TO GRADE WITH NEW AC OVERLAY.  
SET NEW TIES (SEE BACK OF THIS SHEET)

**SURVEYOR'S STATEMENT**

This Corner Record was prepared by me or under my direction in conformance with

the Land Surveyor's Act on DEC 1999

Signed Roy L. Turney P.L.S or R.C.E. No. 5523

**COUNTY SURVEYOR'S STATEMENT**

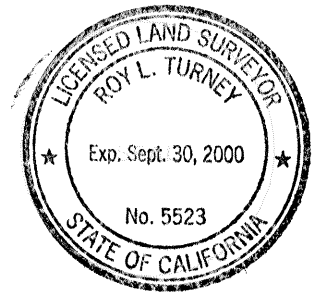
This Corner Record was received JAN 2000

and examined and filed JAN 2000

Signed Roy L. Turney P.L.S or R.C.E. No. 5523

Title DEP. CO. SURVEYOR

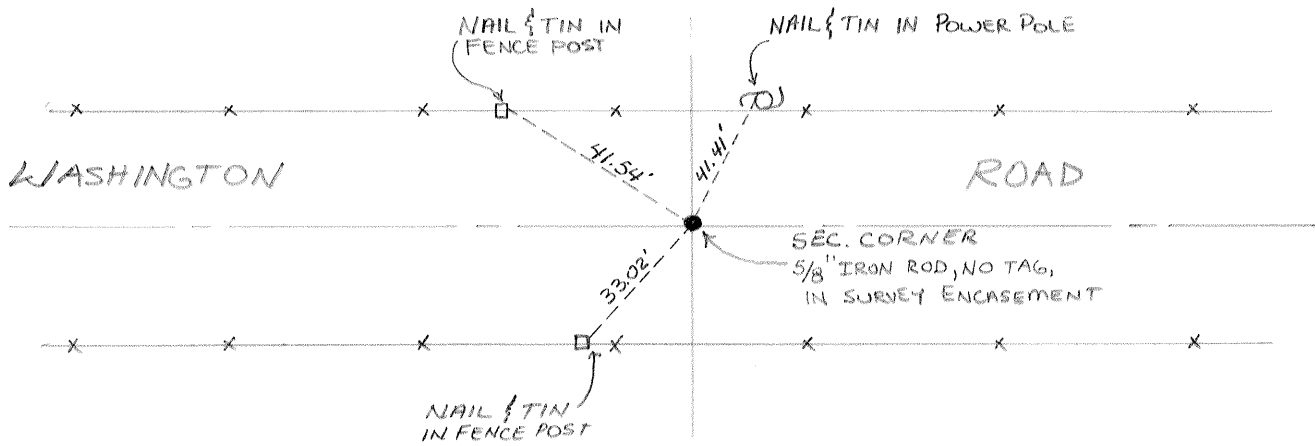
County Surveyor's Comment \_\_\_\_\_





SECTION 28

SECTION 27



SECTION 33

SECTION 34

T. 9 S., R. 13 E.