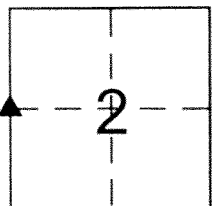


CORNER RECORD

Document Number 2564

City of _____ County of Merced, California

Brief Legal Description W 1/4 Corner, Section 2, T.7 S, R. 10 E., M.D.B & M.



CORNER TYPE

Government Corner Control
Meander Property
Rancho Other
Date of Survey 01/24/2013

COORDINATES (Optional)

N. _____
E. _____
Zone _____ NAD27 NAD83
NAD83 Epoch _____
Elev. _____
Vert. Datum: NGVD29 NAVD88
Meas. Units: Metric Imperial

Corner - Left as found Found and tagged Established Reestablished Rebuilt

Identification and type of corner found: Evidence used to identify or procedure used to establish or reestablish the corner:

Found 2" Iron Pipe with CALTRANS brass tag and tack in center of pipe.

Monument is down 1.5'in dirt below surface of a cultivated field, west of Lander Ave.

Monument was found per CALTRANS Right of Way Map, Sheet 14,

EA 381502, 05/11/08 last revised 07/06/10, District 6 CALTRANS. Also found

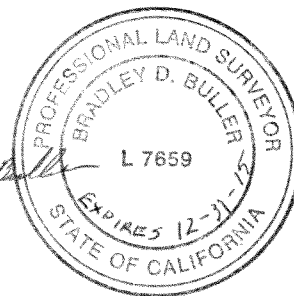
reference monument which is a 2" Iron Pipe per R.S. vol. 9, page 1, 1967.

A description of the physical condition of the monument as found and as set or reset: Monument was found to be in good condition. Reference monument was also found in good condition.

SURVEYOR'S STATEMENT

This Corner Record was prepared by me or under my direction in conformance with the Land Surveyor's Act on March 20, 2013

Signed Bradley D. Buller P.L.S or R.C.E. No. L 7659



COUNTY SURVEYOR'S STATEMENT

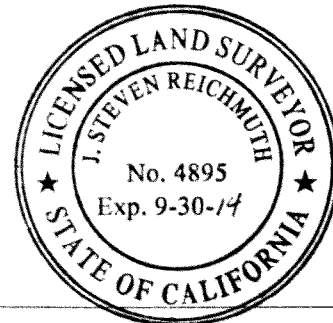
This Corner Record was received March 21, 2013

and examined and filed April 12, 2013

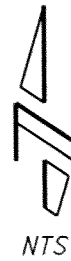
Signed J. Steven Reichmuth P.L.S or R.C.E. No. 4895

Title Acting County Surveyor

County Surveyor's Comment _____



TO HILMAR →



DIRT ROAD SET 3/4" REBAR W/PUNCH MARK DN 0.5'

SET 3/4" REBAR W/PUNCH MARK DN 1.0'

139.20'

137.02'

FND 2" IP W/CT TAG DN 1.5' IN FIELD

151.79'

103.49'

FND NAIL & SHINER W/ BRASS CALTRANS TAG IN POLE

DIRT ROAD

FND 2" IP UP 0.8' AT OLD WOODEN FENCE PER RS V.9 P.1 1967

151.13'

SET 3/4" REBAR W/PUNCH MARK DN 1.1'

STATE ROUTE 165