

CORNER CORD

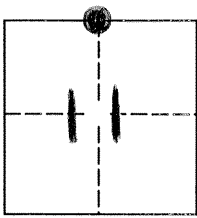
DPD-3011A (Rev. 3/98) CT# 7541-4554-2

Document Number 2475

City of _____

County of MERCED, California

Brief Legal Description N. 1/4 CORNER SECTION 11, T.7S., R.10E., M.D.M. AS SHOWN ON PLAT OF STEVINSON COLONY SUBDIVISION NO. 3



CORNER TYPE

- Government Corner Control
- Meander Property
- Rancho Other

Date of Survey 2-24-00

COORDINATES(Optional)

N. _____
 E. _____
 Zone _____ NAD27 NAD83
 NAD83 Epoch _____
 Elevation _____
 Vert. Datum: NGVD29 NAV88
 Meas. Units: Metric Imperial

Corner - Left as found Established Reestablished Rebuilt

Identification and type of corner found: Evidence used to identify or procedure used to establish or reestablish the corner:
FOUND 5/8" INCH IRON PIN IN CONCRETE, DOWN 2 INCHES, PER MAP OF STEVINSON COLONY SUBDIVISION NO. 3, RECORDED IN VOL. 3, O.P., PAGE 10, M. C. R.

A description of the physical condition of the monument as found and as set or reset:
FOUND IN GOOD CONDITION, DOWN 12 INCHES. SET 3 SWING TIES.

SURVEYOR'S STATEMENT

This Corner Record was prepared by me or under my direction in conformance with the Land Surveyor's Act on FEB. 24, 2000.

Signed John H. Asher P.L.S. Number 7221
For the State of California
Department of Transportation



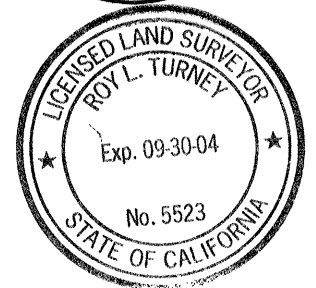
COUNTY SURVEYOR'S STATEMENT

This Corner Record was received AUG. 16, 2000 and examined and filed SEPT. 5, 2000.

Signed Roy L. Turney P.L.S. or R.C.E. Number 5523

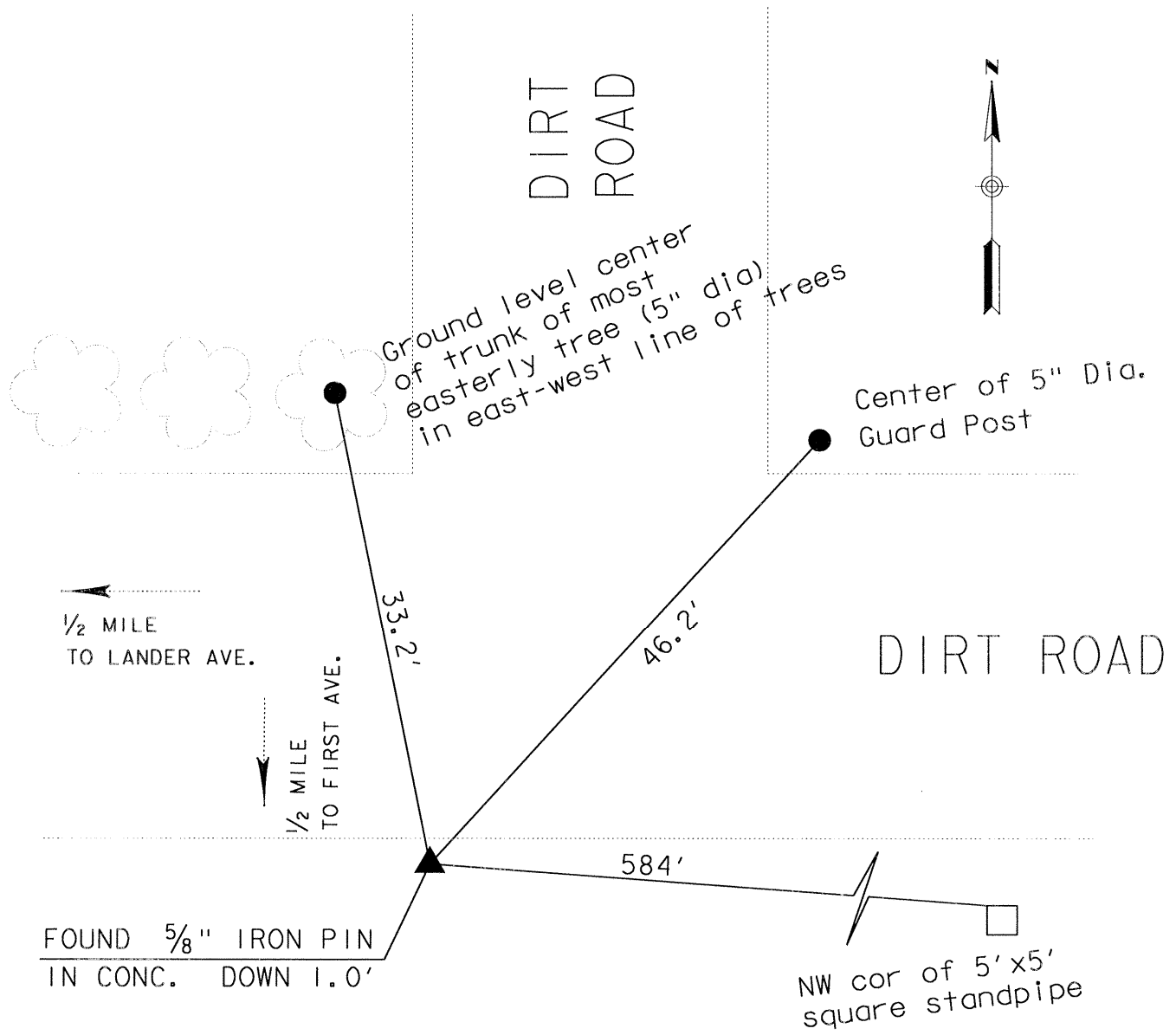
Title DEPUTY CO. SURVEYOR

County Surveyor's Comment _____



2475

N. 1/4 Cor. Sec. 11, T.7S., R.10E. M.D.M.
 per map of Stevinson Colony Subdivision No. 3
 recorded in Vol. 3, Page 10, O.P., M.C.R.



584' W. OF N.W. COR. OF 5' X 5' SQ. STAND PIPE
 46.2' S.W. OF CTR. 5" GUARD POST
 33.2' S. OF CENTER OF TRUNK (AT GROUND LEVEL)
 OF MOST E'LY TREE IN E-W LINE OF TREES