

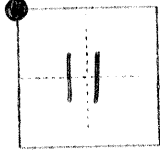
2469

CC IER RECORD

COUNTY OF Merced T 9 S R 15 E Mt. Diablo MERIDIAN CALIFORNIA

CORNER TYPE: GOV'T. CORNER [X] MEANDER [] RANCHO [] CONTROL [] OTHER []

CORNER IDENTIFICATION — DATE OF VISIT April 17, 1975



Northwest corner Section 11

CORNER — LEFT AS FOUND [X] FOUND AND TAGGED [] REESTABLISHED OBLITERATED CORNER [] REBUILT []

PHYSICAL DESCRIPTION OF CORNER FOUND; EVIDENCE AND METHOD USED TO IDENTIFY OR REESTABLISH

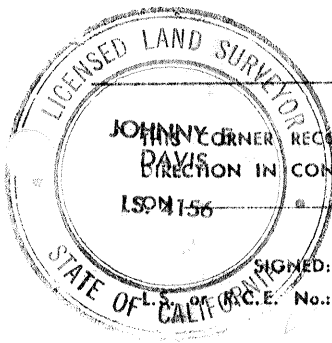
Found 2" O.D. pipe with tag L.S. 2737 at 1'0" below ground line.

PHYSICAL DESCRIPTION OF MONUMENTS REBUILT OR PERPETUATED

CALIFORNIA COORDINATE SYSTEM ORDER: FIRST [] SECOND [] THIRD [] STATIONS USED: NGS (USC & GS) [] STATE [] COUNTY [] OTHER [] STATION _____ STATION _____ ZONE _____ ELEVATION _____ NORTHINGS (Y) _____ EASTINGS (X) _____

SKETCH: (Include reference tie or witness points, remarks and topo of area)

37.00 South from nail & shiner in power pole.
53.22 Southwest from nail & shiner in power pole.
18.87 North from nail & shiner in power pole.



SURVEYOR'S CERTIFICATE

THIS CORNER RECORD WAS PREPARED BY ME OR UNDER MY DIRECTION IN CONFORMANCE WITH THE LAND SURVEYORS ACT January 30, 1979

SIGNED: [Signature] No.: 4156

SEAL

COUNTY SURVEYOR'S CERTIFICATE

THE CORNER RECORD WAS RECEIVED _____ 19____ AND EXAMINED AND FILED _____ 19____ BY: _____

TITLE: _____

DOCUMENT No. 2469

STATEMENT ON BACK OF SHEET

YES [] NO []