

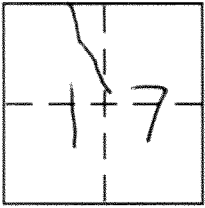
**CORNER RECORD**

Document Number 2411-C

City of \_\_\_\_\_

County of MERCED, California

Brief Legal Description PORTION OF SECTION 17 12/11



12/11

**CORNER TYPE**

Government Corner  Control   
Meander  Property   
Rancho  Other   
Date of Survey 8-13-13

**COORDINATES (Optional)**

N. \_\_\_\_\_  
E. \_\_\_\_\_  
Zone \_\_\_\_\_ NAD27  NAD83   
NAD83 Epoch \_\_\_\_\_  
Elev. \_\_\_\_\_  
Vert. Datum: NGVD29  NAVD88   
Meas. Units: Metric  Imperial

Corner - Left as found  Found and tagged  Established  Reestablished  Rebuilt

Identification and type of corner found: Evidence used to identify or procedure used to establish or reestablish the corner:

SEE SKETCH

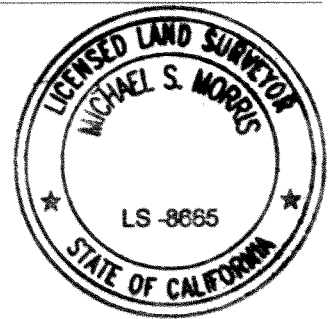
A description of the physical condition of the monument as found and as set or reset:

SEE SKETCH

**SURVEYOR'S STATEMENT**

This Corner Record was prepared by me or under my direction in conformance with the Land Surveyors Act on AUGUST 28<sup>TH</sup> 2013

Signed Michael S. Morris P.L.S. or R.C.E. No. 8665



**COUNTY SURVEYOR'S STATEMENT**

This Corner Record was received August 29, 2013

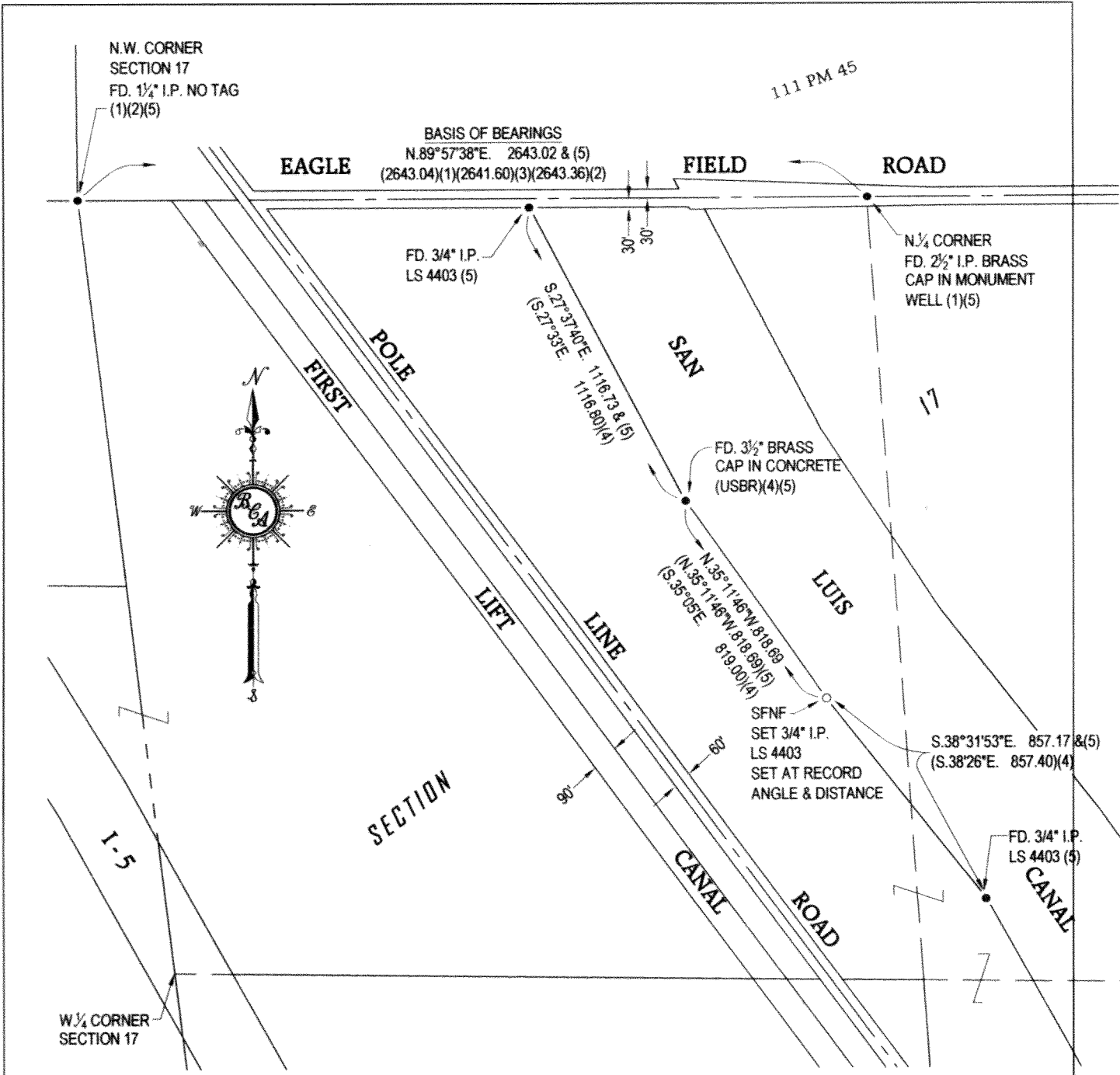
and examined and filed September 3, 2013

Signed [Signature] P.L.S. or R.C.E. No. 4895

Title County Surveyor



County Surveyor's Comment \_\_\_\_\_



**LEGEND**

- FOUND AND ACCEPTED MONUMENT AS INDICATED
- SET 3/4" IRON PIPE, L.S. 4403

**REFERENCE:**

1. PARCEL MAP FOR ANITA GIANNONE, 111 P.M. 45, M.C.R.
2. WESTSIDE FREEWAY - CO. SURVEYORS FILE # 1-W-17 G
3. THE PIPE LINE ROAD AND AIRPORT ROAD (POLE LINE ROAD) - CO. SURVEYORS FILE #4-P-5B (SHEETS 4 & 5)
4. USBR - RIGHT OF WAY UNIT NO. 41, SAM HAMBURG FARMS, ET. AL. DRAWING #805-236-5260, ON FILE WITH CO. SURVEYORS OFFICE. (1651 O.R. 264, M.C.R.)
5. RECORD OF SURVEY FOR BERJ MOOSEKIAN, 51 R.S. 8, M.C.R.

**BASIS OF BEARINGS:**  
N.89°57'38"E. FOR THE CENTERLINE OF EAGLE FIELD ROAD AS SHOWN ON THE PARCEL MAP FOR ANITA GIANNONE, RECORDED IN VOLUME 111 OF PARCEL MAPS AT PAGE 45, MERCED COUNTY RECORDS.

