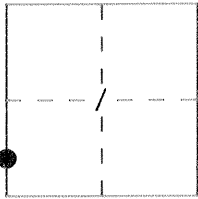


CORNER RECORD

Document Number 2361-0

City of _____ County of MERCED, California

Brief Legal Description NEAR THE SOUTHWEST CORNER PARCEL 2 OF BK 74 PARCEL MAPS P6.42 SECTION 1 T.8S., R.14E. M.D.B&M.



CORNER TYPE

COORDINATES (Optional)

Government Corner Control
Meander Property
Rancho Other
Date of Survey 7-15-94

N. _____
E. _____
Zone _____ Datum _____
Elev. _____

Corner — Left as found Found and tagged Established Reestablished Rebuilt

Identification and type of corner found: Evidence used to identify or procedure used to establish or reestablish the corner:
FOUND 3/4" IRON PIPE WITH TAG. L.S. 4403 DOWN 0.2' CORNER IS S.75°00'51"W., 20.32 FROM THE S.W. COR OF PARCEL 2 OF 74-PM-42
CORNER ORGIN CONCIDES WITH SAID PARCEL MAP.

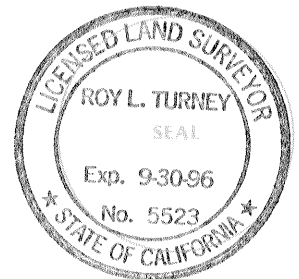
A description of the physical condition of the monument as found and as set or reset: MONUMENT IN GOOD CONDITION

POINT WAS TIED OUT PRIOR TO PAVEMENT PULVERIZATION PROJECT

SURVEYOR'S STATEMENT

This Corner Record was prepared by me or under my direction in conformance with the Land Surveyors' Act on JULY 20 1994.

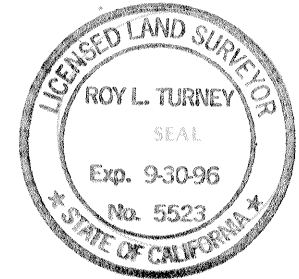
Signed Roy L. Turney L.S. or ~~R.C.E.~~ Number 5523



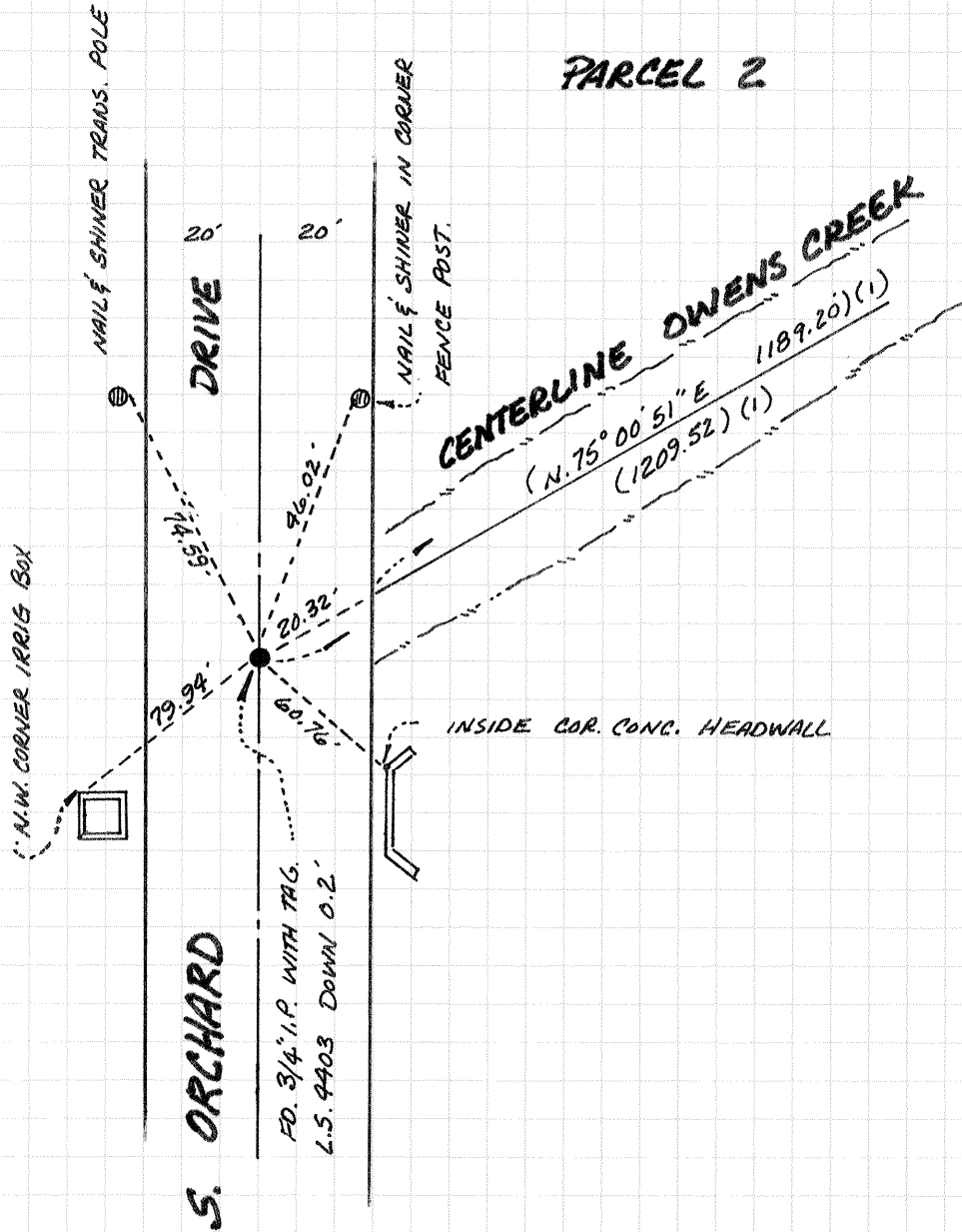
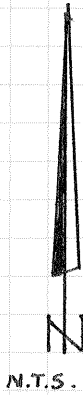
COUNTY SURVEYOR'S STATEMENT

This Corner Record was received JULY 20 1994 and examined and filed JULY 20, 1994.

Signed Roy L. Turney Title DEP. CO. SURVEYOR



County Surveyor's Comment _____



REFERENCE:
(1) PARCEL MAP FOR MARKEE ALTHOFF
VOL. 74 P. 6.42