

CORNER RECORD

Agency Index 2360

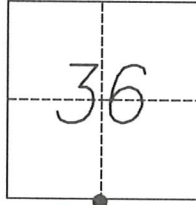
Document Number _____

City of _____ County of MERCED, California

Brief Legal Description SOUTH 1/4 CORNER SECTION 36, T.5S., R.10 E MOUNT DIABLO BASE AND MERIDIAN

CORNER TYPE

COORDINATES (Optional)



5
T.5S., R.10E.

Government Corner Control
 Meander Property
 Rancho Other

N. _____ E. _____

Elevation _____

Units Metric U.S. Survey Foot

Horizontal Datum _____

Zone _____ Epoch Date _____

Vertical Datum _____

Date of Survey JULY 11, 2019

Complies with Public Resources Code §§8801-8819

Complies with Public Resources Code §§8890-8902

PLS Act Ref.: 8765(d) 8771 8773 Other:

Corner/Monument: Left as found Established Rebuilt Pre-Construction

Found and tagged Reestablished Referenced Post-Construction

Narrative of corner identified and monument as found, set, reset, replaced, or removed:

See sheet #2 for description(s):

MONUMENT MAY BE DISTURBED DUE TO CONSTRUCTION

SURVEYOR'S STATEMENT

This Corner Record was prepared by me or under my direction in conformance with

the Professional Land Surveyors' Act on August 6, 2019

Signed [Signature] P.L.S. or R.C.E. No. 9417



COUNTY SURVEYOR'S STATEMENT

This Corner Record was received August 7, 2019

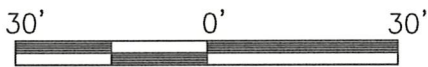
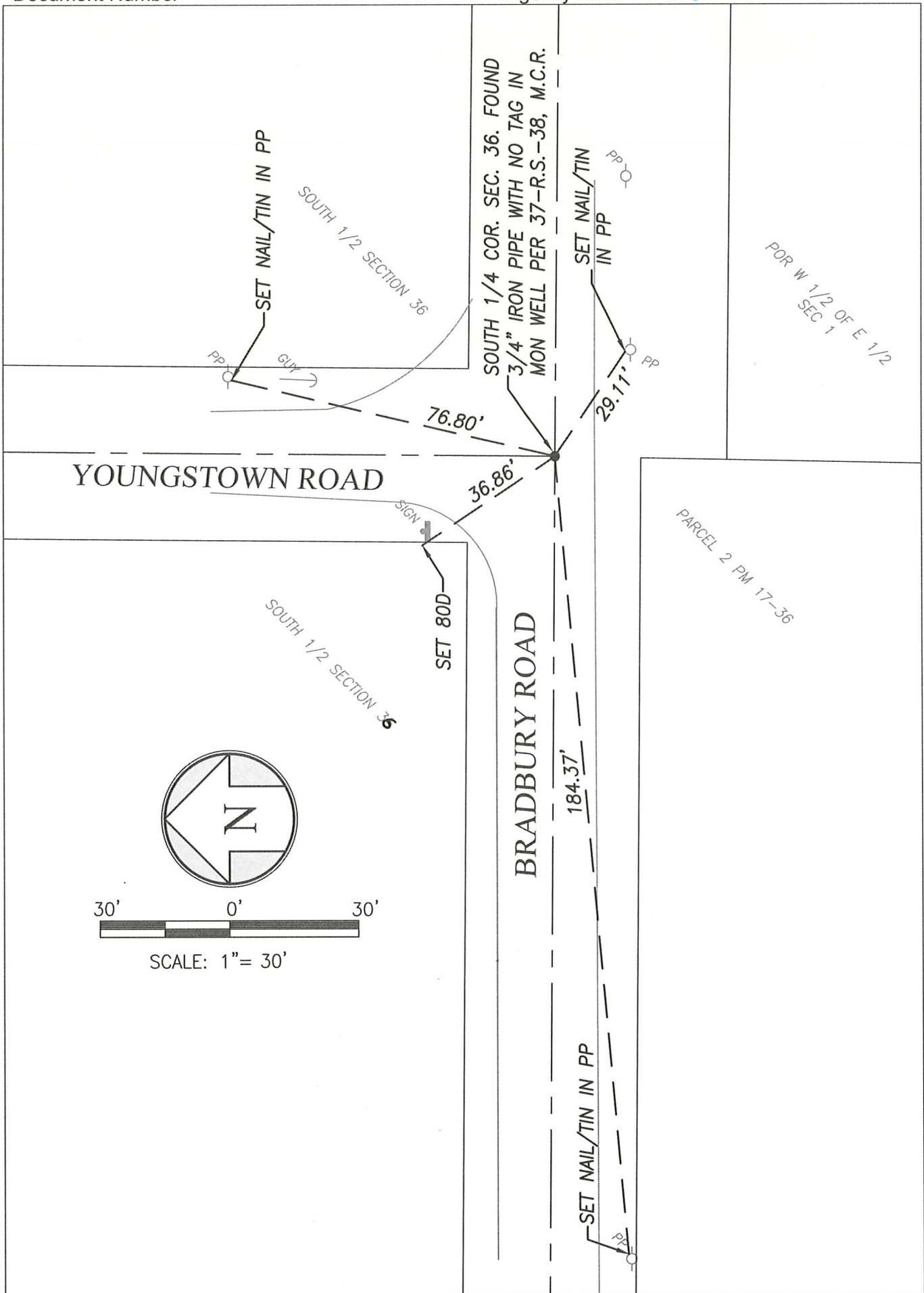
and examined and filed August 19, 2019

Signed Zachary T. Janz P.L.S. or R.C.E. No. 8664

Title COUNTY SURVEYOR

County Surveyor's Comment





SCALE: 1" = 30'