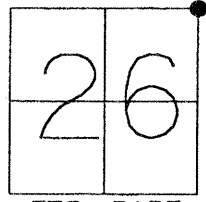


CORNER RECORD

Document Number 2354

City of MERCED County of MERCED, California

Brief Legal Description NORTHEAST CORNER SECTION 26, T. 7 S., R. 13 E., M.D.B.&M.



T7S, R13E

Government Corner Control
Meander Property
Rancho Other
Date of Survey 11-23-01

COORDINATES (Optional)

N. _____
E. _____
Zone _____ NAD27 NAD83
NAD83 Epoch _____
Elev. _____
Vert. Datum: NGVD29 NAVD88
Meas. Units: Metric Imperial

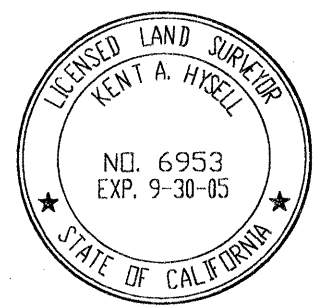
Corner - Left as found Found and tagged Established Reestablished Rebuilt

Identification and type of corner found: Evidence used to identify or procedure used to establish or reestablished the corner:
SEARCHED FOR THE NORTHEAST CORNER OF SECTION 26 AS SHOWN AS BEING SET ON VOL. 31 OF MAPS AT PAGE 8 BUT NOTHING WAS FOUND. USED FOUND MONUMENTATION REFERENCED ON MAP TO REESTABLISH THE MONUMENT.

A description of the physical condition of the monument as found and as set or reset:
SET 2 1/2" BRASS DISK STAMPED LS 6953 IN CONCRETE IN MONUMENT WELL.

This Corner Record was prepared by me or under my direction in conformance with the Land Surveyors' Act on DECEMBER 3, 2001.

Signed [Signature] L.S. 6953

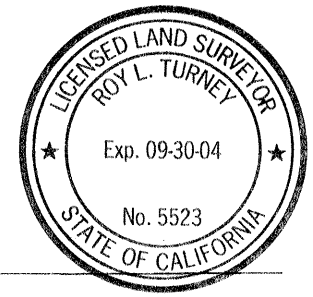


COUNTY SURVEYOR'S STATEMENT

This Corner Record was received 2-12, 2002 and examined and filed 2-21-, 2002.

Signed [Signature] L.S. R.C.E. No. 5523

Title DEPUTY County Surveyor



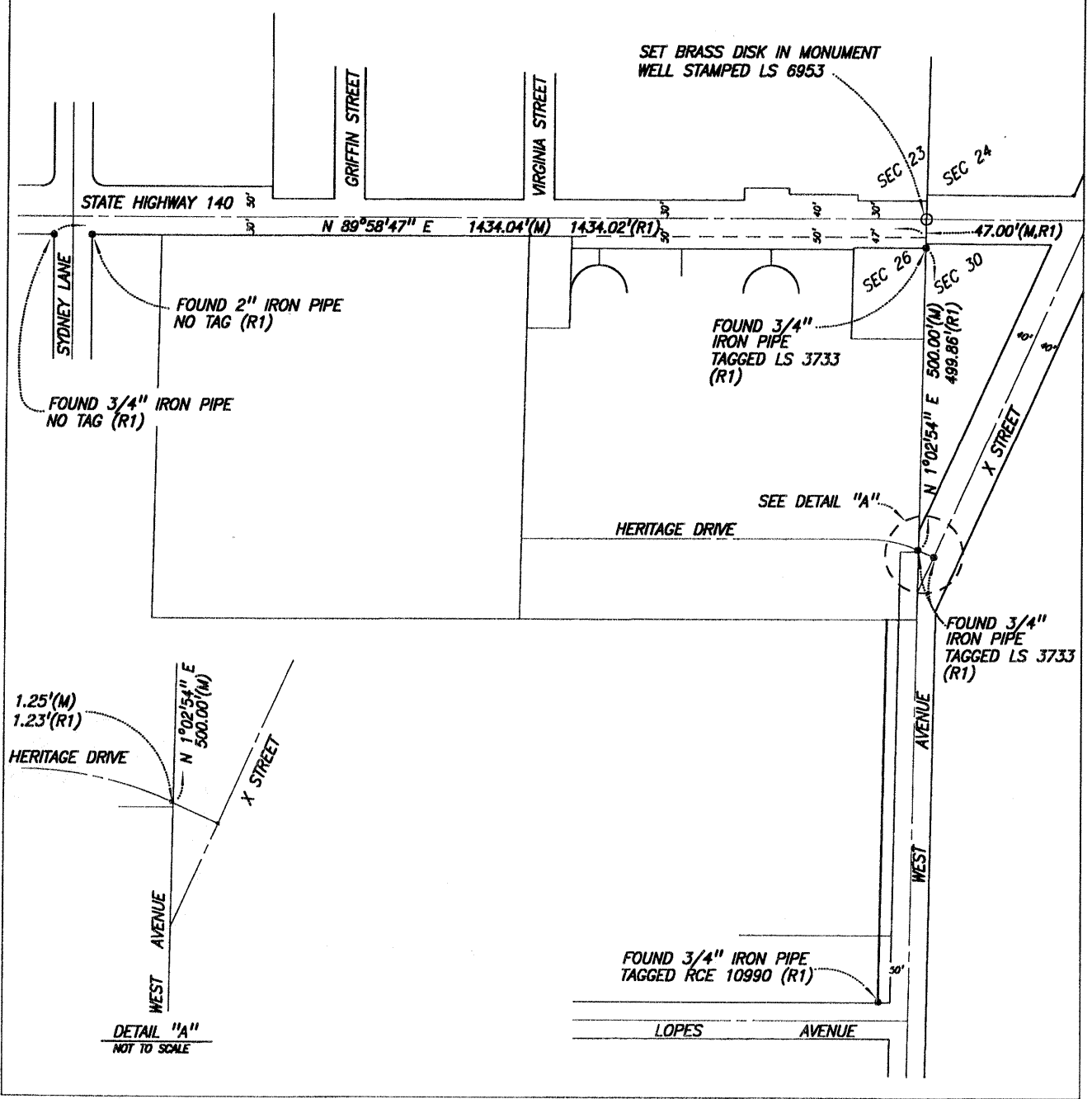
County Surveyors Comment _____

BASIS OF BEARINGS:
 THE NORTH LINE OF SEC 26, T7S,
 R13E, M.D.B.&M., AS SHOWN IN BK 31
 OF OFFICIAL PLATS, AT PGS 7 & 8,
 TAKEN TO BE N 89°58'47" E

LEGEND

(M) MEASURED
 (R1) 31-MAPS-8

NOT TO SCALE



DETAIL "A"
 NOT TO SCALE