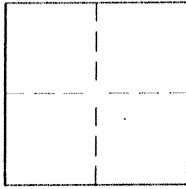


CORNER RECORD

Document Number 2354-PP

City of MERCED County of MERCED, California

Brief Legal Description WITNESS CORNER TO INTERSECTION OF 16th AND "P" STREETS



CORNER TYPE

Government Corner Control
Meander Property
Rancho Other
Date of Survey 3-22-96

COORDINATES (Optional)

N. _____
E. _____
Zone _____ Datum _____
Elev. _____

Corner- Left as found Found and tagged Established Reestablished Rebuilt

Identification and type of corner found: Evidence used to identify or procedure used to establish the corner:

FOUND WITNESS CORNER TO THE INTERSECTION OF "P" STREET AND 16th STREET
PER UNRECORDED MAP BY R.E. GRAHAM, C.E. 6741, CITY ENGINEER, ENTITLED "MONUMENT
RESTORATION AND REPLACEMENT IN THE CITY OF MERCED."

A description of the physical condition of the monument as found and as set or reset:

FOUND 5/8" BAR NOT TAGGED AND LEFT AS FOUND

SURVEYOR'S STATEMENT

This Corner Record was prepared by me or under my direction in conformance with the Land Surveyors' Act on MARCH 28 1996

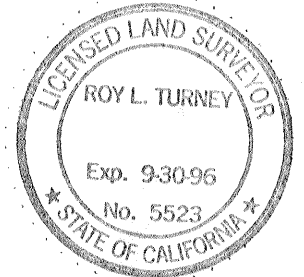
Signed Cris H. Robles L.S. or R.C.E. Number L.S. 5503



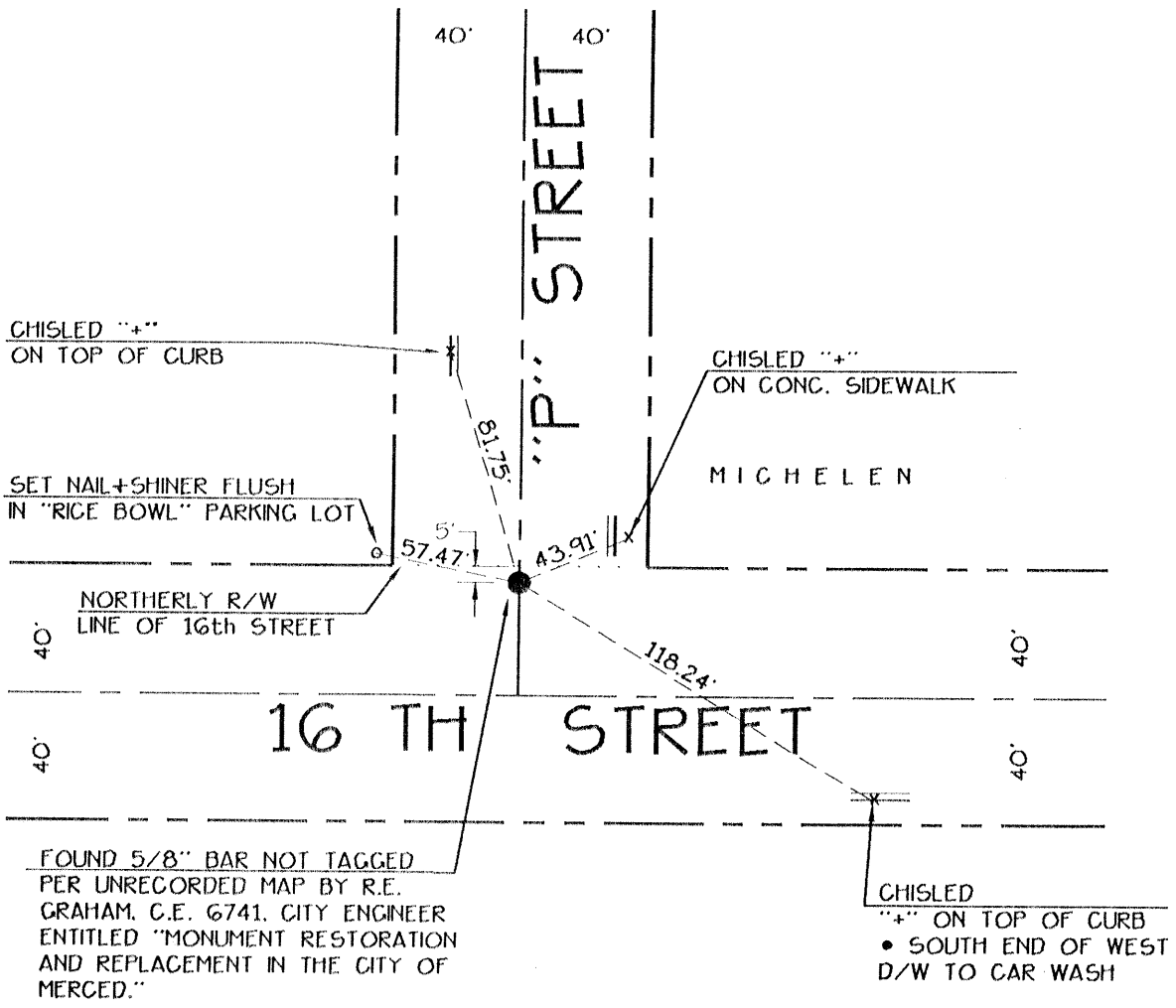
COUNTY SURVEYOR'S STATEMENT

This Corner Record was received MAY 1996 and examined and filed MAY 21 1996.

Signed Roy L. Turney Title Dep. Co. Sur.



County Surveyor's Comment _____



CHISLED "+"
ON TOP OF CURB

CHISLED "+"
ON CONC. SIDEWALK

SET NAIL+SHINER FLUSH
IN "RICE BOWL" PARKING LOT

MICHELEN

NORTHERLY R/W
LINE OF 16th STREET

40'

40'

16 TH STREET

40'

40'

FOUND 5/8" BAR NOT TAGGED
PER UNRECORDED MAP BY R.E.
GRAHAM, C.E. 6741, CITY ENGINEER
ENTITLED "MONUMENT RESTORATION
AND REPLACEMENT IN THE CITY OF
MERCED."

CHISLED
"+" ON TOP OF CURB
• SOUTH END OF WEST
D/W TO CAR WASH

