

CORNER RECORD

COUNTY OF MERCED T. 7 S R. 13 E. M.D.B.&M. MERIDIAN CALIFORNIA
 CORNER TYPE: GOVT. CORNER MEANDER RANCHO CONTROL OTHER
 CORNER IDENTIFICATION — DATE OF VISIT NOVEMBER 3 19 92



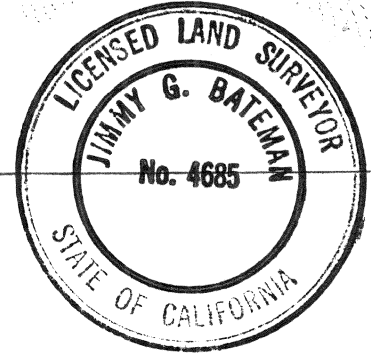
CORNER — LEFT AS FOUND FOUND AND TAGGED REESTABLISHED OBLITERATED CORNER REBUILT

PHYSICAL DESCRIPTION OF CORNER FOUND; EVIDENCE AND METHOD USED TO IDENTIFY OR REESTABLISH

SEE PLAT BELOW

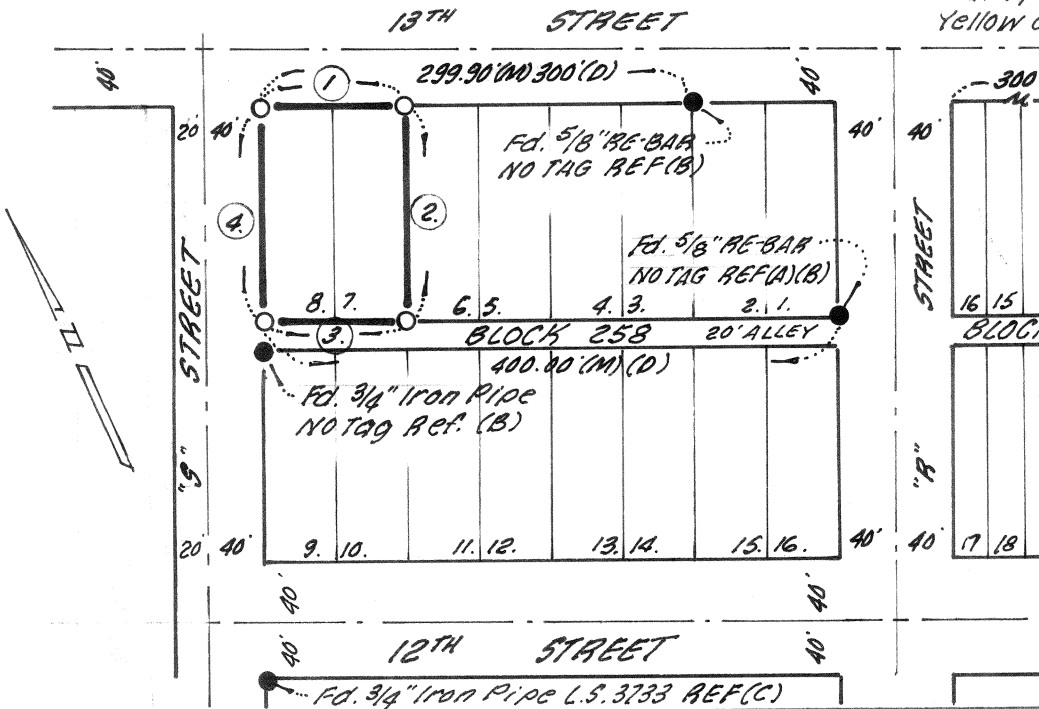
PHYSICAL DESCRIPTION OF MONUMENTS REBUILT OR PERPETUATED

SET 3/4" IRON PIPE TAGGED L.S. 4685



CALIFORNIA COORDINATE SYSTEM ORDER: FIRST SECOND THIRD
 STATIONS USED: NGS (USC & GS) STATE COUNTY OTHER STATION _____ STATION _____
 ZONE _____ ELEVATION _____ NORTHINGS (Y) _____ EASTINGS (X) _____

SKETCH: (Include reference tie or witness points, remarks and topo of area) *Fd. 3/4" Iron Pipe REF(B) Yellow Cap (No Number)*



LEGEND:

- SET 3/4" IRON PIPE TAGGED L.S. 4685
- FD. MONUMENTS AS NOTED.
- ① S. 65° 20' 00" E. 99.97'
- ② S. 24° 39' 19" W. 150.18'
- ③ N. 65° 20' 55" W. 100.00'
- ④ N. 24° 40' 00" E. 150.21'

REFERENCES:

- (A) BK. 29 - P.M. - Pg. 13 M.C.R.
- (B) Field Book 394 - Page 65 Bedeson, Cardoza & Andrews
- (C) Field Book 463 - Page 33 Bedeson, Cardoza & Andrews
- (D) BK. 11 - MAPS - Pg. 2

SURVEYOR'S CERTIFICATE

THIS CORNER RECORD WAS PREPARED BY ME OR UNDER MY DIRECTION IN CONFORMANCE WITH THE LAND SURVEYORS ACT ON NOVEMBER 3 19 92.

SIGNED: Jimmy G. Bateman
 L.S. or R.C.E. No.: L.S. 4685

COUNTY SURVEYOR'S CERTIFICATE

THE CORNER RECORD WAS RECEIVED Nov 11-16 1992 AND EXAMINED AND FILED 11-16 1992

BY: Ray Turner
 TITLE: Dep. Co. Surveyor

DOCUMENT No. 2354 JJ-KK-LL

STATEMENT ON BACK OF SHEET YES NO

