

CORNER RECORD

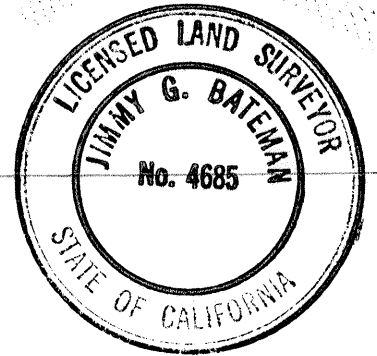
COUNTY OF MERCED T. 7 S R. 13 E M.D.B.&M. MERIDIAN CALIFORNIA
 CORNER TYPE: GOVT. CORNER MEANDER RANCHO CONTROL OTHER
 CORNER IDENTIFICATION — DATE OF VISIT NOVEMBER 3 19 92



CORNER — LEFT AS FOUND FOUND AND TAGGED REESTABLISHED OBLITERATED CORNER REBUILT

PHYSICAL DESCRIPTION OF CORNER FOUND; EVIDENCE AND METHOD USED TO IDENTIFY OR REESTABLISH

SEE PLAT BELOW

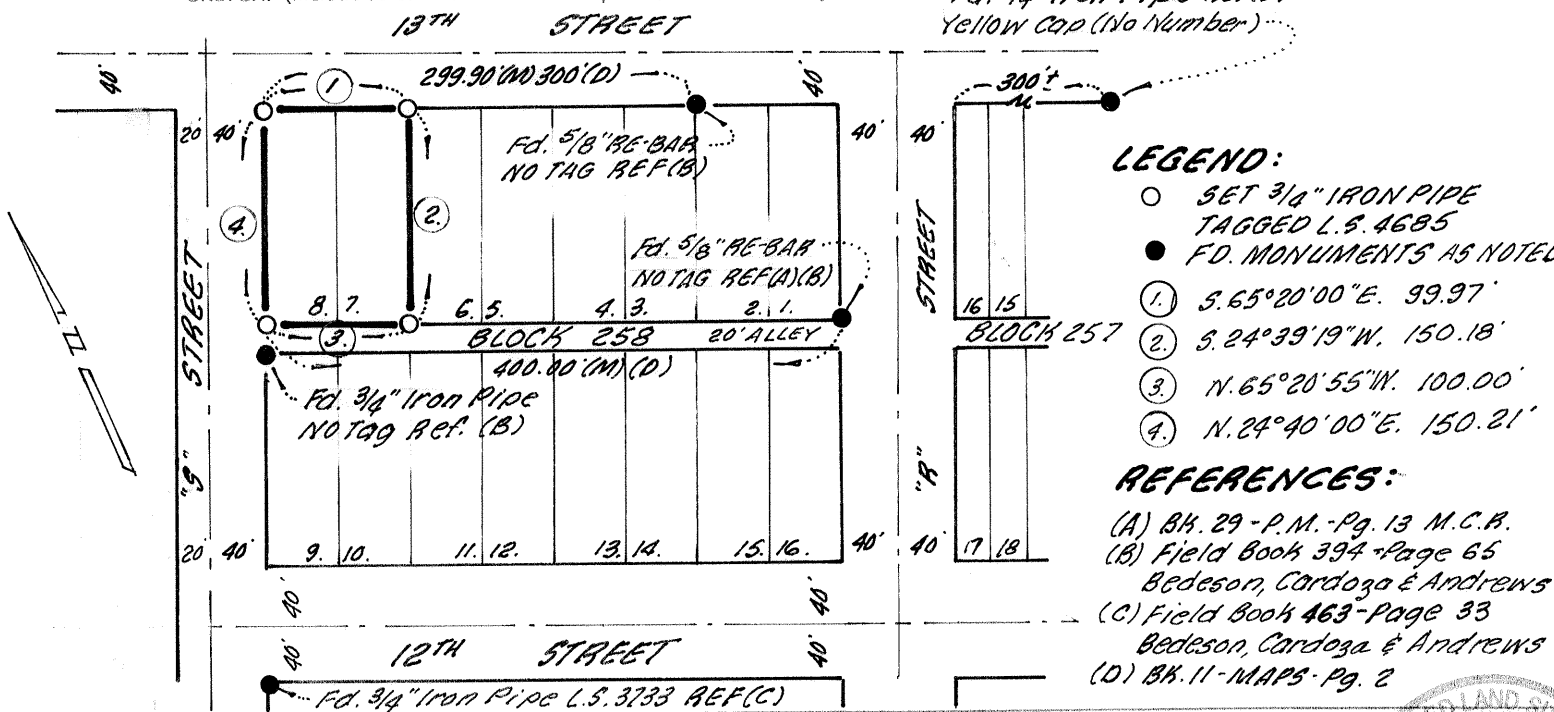


PHYSICAL DESCRIPTION OF MONUMENTS REBUILT OR PERPETUATED

SET 3/4" IRON PIPE TAGGED L.S. 4685

CALIFORNIA COORDINATE SYSTEM ORDER: FIRST SECOND THIRD
 STATIONS USED: NGS (USC & GS) STATE COUNTY OTHER STATION _____ STATION _____
 ZONE _____ ELEVATION _____ NORTHINGS (Y) _____ EASTINGS (X) _____

SKETCH: (Include reference tie or witness points, remarks and topo of area) *Fd. 3/4" Iron Pipe REF(B) Yellow Cap (No Number)*



- LEGEND:**
- SET 3/4" IRON PIPE TAGGED L.S. 4685
 - FD. MONUMENTS AS NOTED.
 - ① S. 65° 20' 00" E. 99.97'
 - ② S. 24° 39' 19" W. 150.18'
 - ③ N. 65° 20' 55" W. 100.00'
 - ④ N. 24° 40' 00" E. 150.21'

- REFERENCES:**
- (A) BK. 29 - P.M. - Pg. 13 M.C.B.
 - (B) Field Book 394 - Page 65 Bedeson, Cardoza & Andrews
 - (C) Field Book 463 - Page 33 Bedeson, Cardoza & Andrews
 - (D) BK. 11 - MAPS - Pg. 2

SURVEYOR'S CERTIFICATE
 THIS CORNER RECORD WAS PREPARED BY ME OR UNDER MY DIRECTION IN CONFORMANCE WITH THE LAND SURVEYORS ACT ON NOVEMBER 3 19 92
 SIGNED: Jimmy G. Bateman
 L.S. or R.C.E. No. L.S. 4685

COUNTY SURVEYOR'S CERTIFICATE
 THE CORNER RECORD WAS RECEIVED Nov 11-16 1992 AND EXAMINED AND FILED BY: Ray J. Turner
 TITLE: Dep. Co. Surveyor
 DOCUMENT No. 2354 JJ-KK
 STATEMENT ON BACK OF SHEET YES NO