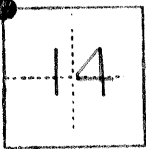


NO. 23 '83

CORNER RECORD

COUNTY OF Merced T. 9S R. 15E Mt. Diablo MERIDIAN CALIFORNIA

CORNER TYPE: GOV'T. CORNER [X] MEANDER [] RANCHO [] CONTROL [] OTHER []
DATE OF VISIT April 15, 1975



Northwest corner Section 14, T9S, R15E

CORNER — LEFT AS FOUND [X] FOUND AND TAGGED [] REESTABLISHED OBLITERATED CORNER [] REBUILT []

PHYSICAL DESCRIPTION OF CORNER FOUND; EVIDENCE AND METHOD USED TO IDENTIFY OR REESTABLISH

Found 2" O.D. pipe 1.0 below road surface

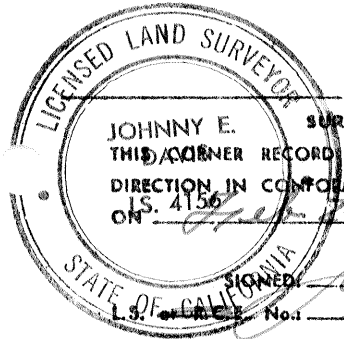
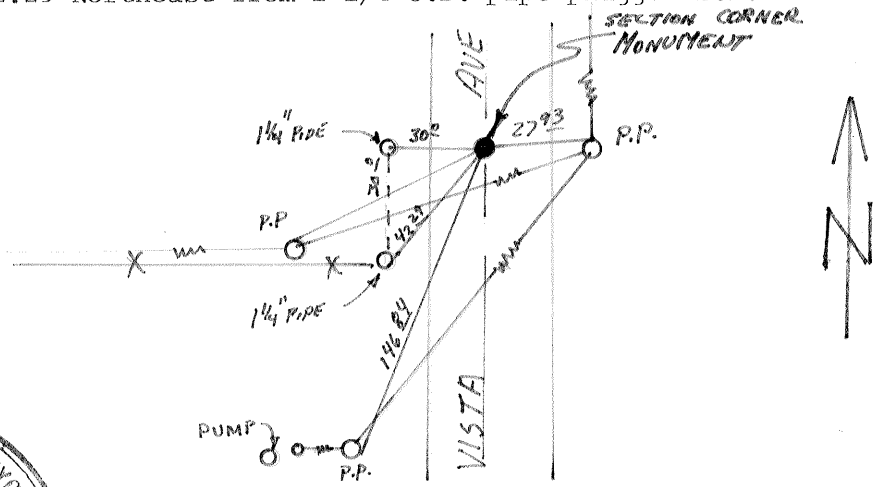
PHYSICAL DESCRIPTION OF MONUMENTS REBUILT OR PERPETUATED

Also found 1-1/4" O.D. pipe 30' west of 2" O.D. pipe and 1-1/4" O.D. pipe tagged L.S. 565 30' West and 30' South of SECTION CORNER

CALIFORNIA COORDINATE SYSTEM ORDER: FIRST [] SECOND [] THIRD []
STATIONS USED: NGS (USC & GS) [] STATE [] COUNTY [] OTHER [] STATION _____ STATION _____
ZONE _____ ELEVATION _____ NORTHINGS (Y) _____ EASTINGS (X) _____

SKETCH: (Include reference tie or witness points, remarks and topo of area)

- 27.97 West from nail & shiner in power pole
- 65.52 Northeast from nail & shiner in power pole
- 146.84 North from nail & shiner in power pole
- 30' East from 1-1/4" O.D. pipe
- 42.29 Northeast from 1-1/4 O.D. pipe plugged L.S. 656



SURVEYOR'S CERTIFICATE
THIS CORNER RECORD WAS PREPARED BY ME OR UNDER MY DIRECTION IN COMPLIANCE WITH THE LAND SURVEYORS ACT ON L.S. 4156
JOHNNY E. DAVIS
No. 4156

COUNTY SURVEYOR'S CERTIFICATE
THE CORNER RECORD WAS RECEIVED Feb. 25 1980
AND EXAMINED AND FILED 19
BY: Walt Mitchell
TITLE:

DOCUMENT No. 2318

STATEMENT ON BACK OF SHEET YES [] NO []