

231

RECORD

COUNTY OF Merced T. 9 S R. 14 E Mt. Diablo MERIDIAN CALIFORNIA
CORNER TYPE: GOV'T. CORNER MEANDER RANCHO CONTROL OTHER
CORNER IDENTIFICATION — DATE OF VISIT March 19, 19 76

26

Northwest Corner of Block 26 (Section 26) as shown on Map of the Bliss Ranch Subdivision on file in Volume 7 of plats, page 48, M.C.R.

CORNER — LEFT AS FOUND FOUND AND TAGGED REESTABLISHED OBLITERATED CORNER REBUILT

PHYSICAL DESCRIPTION OF CORNER FOUND; EVIDENCE AND METHOD USED TO IDENTIFY OR REESTABLISH

Found 1" O.D. pipe with plug marked R.C.E. 6888, 1.0 below ground line.

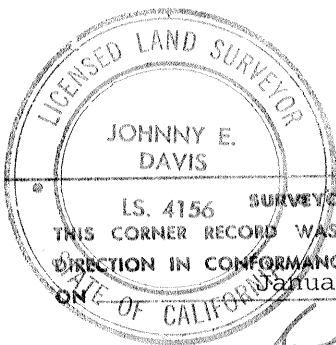
PHYSICAL DESCRIPTION OF MONUMENTS REBUILT OR PERPETUATED

CALIFORNIA COORDINATE SYSTEM ORDER: FIRST SECOND THIRD
STATIONS USED: NGS (USC & GS) STATE COUNTY OTHER STATION _____ STATION _____
ZONE _____ ELEVATION _____ NORTHINGS (Y) _____ EASTINGS (X) _____

SKETCH: (Include reference tie or witness points, remarks and topo of area)

49.40 Northeast from nail & shiner in power pole.

11.88 West from nail & shiner in railroad tie.



JOHNNY E. DAVIS
L.S. 4156 SURVEYOR'S CERTIFICATE
THIS CORNER RECORD WAS PREPARED BY ME OR UNDER MY DIRECTION IN CONFORMANCE WITH THE LAND SURVEYORS ACT
DATE OF CALIFORNIA January 31, 19 79
SIGNED: *Johnny E. Davis*
L.S. or R.C.E. No.: 4156

SEAL

COUNTY SURVEYOR'S CERTIFICATE

THE CORNER RECORD WAS RECEIVED _____ 19 _____
AND EXAMINED AND FILED _____ 19 _____
BY: _____
TITLE: _____
DOCUMENT No. 2314
STATEMENT ON BACK OF SHEET YES NO