

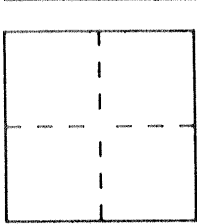
CORNER RECORD

Document Number 2308 WW

City of Los Banos

County of MERCED, California

Brief Legal Description S.W. COR. INTERSECTION 11th ST. & POCHICO BLVD.



SECT 28
T10SR10E
MDM

CORNER TYPE

- Government Corner
- Meander
- Rancho
- Date of Survey 3-12-93
- Control
- Property
- Other

COORDINATES

(Optional)
 N. 202933.3
 E. 1900892.9
 Zone 3 Datum 271
 Elev. _____

Corner — Left as found Found and tagged Established Reestablished Rebuilt

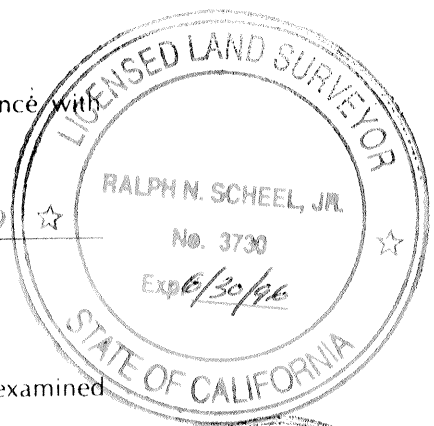
Identification and type of corner found: Evidence used to identify or procedure used to establish or reestablish the corner: 3/4" IRON PIPE TAGGED RCE 11838, # AT SOUTHWEST CORNER OF INTERSECTION OF 11th STREET & POCHECO BLVD.

A description of the physical condition of the monument as found and as set or reset: MONUMENT IN POOR CONDITION, DOWN 0th IN ASPHALT DRIVE OF UNION STATION. WILL BE DESTROYED BY CONSTRUCTION

SURVEYOR'S STATEMENT

This Corner Record was prepared by me or under my direction in conformance with the Land Surveyors' Act on 3-12 1993.

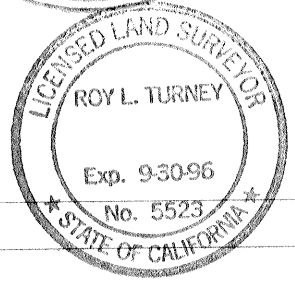
Signed Ralph Scheel L.S. or R.C.E. Number 3730



COUNTY SURVEYOR'S STATEMENT

This Corner Record was received 2-83 1994 and examined and filed 2-25 1994.

Signed Roy Turney Title DEP CO. SUR.

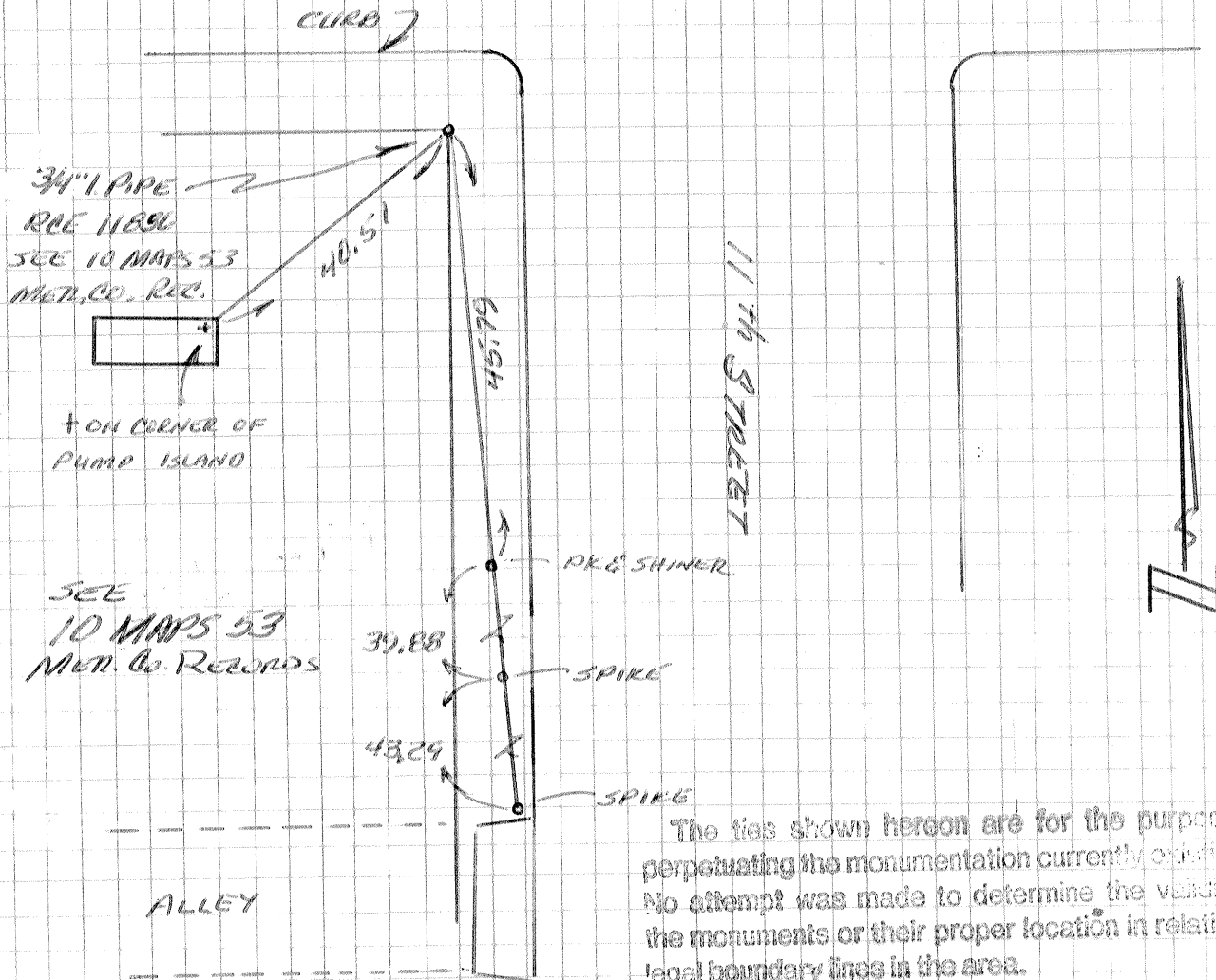


County Surveyor's Comment _____

SECT. 23, T10S, R10E, MDM
 3/4" I. PIPE AT
 S.W. COR. INT. 11th & PACHERO

PACHERO BLVD

ST. RT. 152



The ties shown hereon are for the purpose of perpetuating the monumentation currently existing. No attempt was made to determine the validity of the monuments or their proper location in relation to legal boundary lines in the area.