

CITY OF LOS BANOS

COUNTY OF Merced T. 10 South R. 10 East Mt. Diablo MERIDIAN CALIFORNIA

CORNER TYPE: GOV'T. CORNER MEANDER RANCHO CONTROL OTHER

CORNER IDENTIFICATION — DATE OF VISIT May 10, 19 77



Southeast Corner, Lot 21, Miller and Lux, Inc.
Resubdivision Lots 7, 8, 12, 13, 14 and 15
Section 23 and part of 22, T.10 S., R.10 E., M.D.M., filed in Volume 7,
at page 9, Merced County Records.

CORNER — LEFT AS FOUND FOUND AND TAGGED REESTABLISHED OBLITERATED CORNER REBUILT

PHYSICAL DESCRIPTION OF CORNER FOUND, EVIDENCE AND METHOD USED TO IDENTIFY OR REESTABLISH

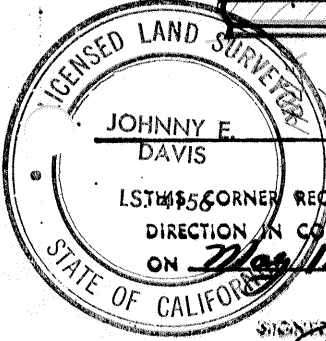
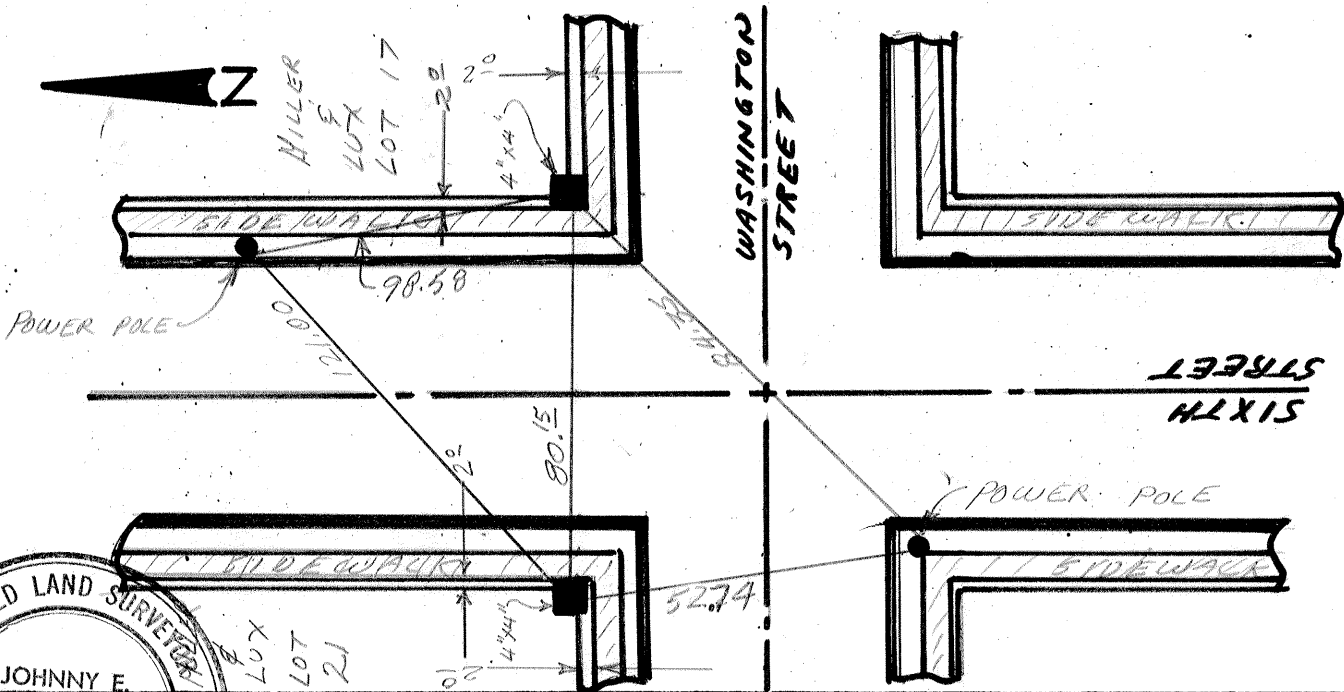
4" X 4" redwood at 3" below ground line.

PHYSICAL DESCRIPTION OF MONUMENTS REBUILT OR PERPETUATED

Drove 1" O.D. X 28" galvanized iron pipe tagged L.S. 4156 in center of
4" X 4" redwood.

CALIFORNIA COORDINATE SYSTEM ORDER: FIRST SECOND THIRD
STATIONS USED: NGS (USC & GS) STATE COUNTY OTHER STATION _____ STATION _____
ZONE _____ ELEVATION _____ NORTHINGS (Y) _____ EASTINGS (X) _____

SKETCH: (Include reference tie or witness points, remarks and topo of area)



SURVEYOR'S CERTIFICATE
L.S. 4156 CORNER RECORD WAS PREPARED BY ME OR UNDER MY
DIRECTION IN CONFORMANCE WITH THE LAND SURVEYORS ACT
ON May 12, 19 77
SIGNATURE: *Johnny E. Davis*

COUNTY SURVEYOR'S CERTIFICATE
THE CORNER RECORD WAS RECEIVED _____ 19_____
AND EXAMINED AND FILED _____ 19_____
BY: _____
TITLE: _____
DOCUMENT NO. 2308-QQ