

CORNER RECORD

Document Number 2308-MMM

City of LOS BANOS

County of MERCED, California

Brief Legal Description LOT 1 AND 2 OF 35 PM 27



CORNER TYPE

- Government Corner Control
- Meander Property
- Rancho Other
- Date of Survey _____

COORDINATES (Optional)

- N. _____
- E. _____
- Zone NAD27 NAD83
- NAD83 Epoch _____
- Elev. _____
- Vert. Datum: NGVD29 NAVD88
- Meas. Units: Metric Imperial

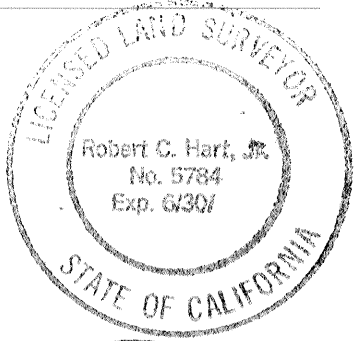
Corner – Left as found Found and tagged Established Reestablished Rebuilt

Identification and type of corner found: Evidence used to identify or procedure used to establish or reestablish the corner:
FOUND 3/4" IRON ROD ; FOUND 1" IRON PIPE WITH TAG 4156 , BENT OVER ; RESET 1"x28" GALV. IRON PIPE WITH PLASTIC PLUG P.L.S. 5784 AT BASE .

A description of the physical condition of the monument as found and as set or reset: FOUND 3/4" IRON ROD , SET PLASTIC PLUG P.L.S. 5784

SURVEYOR'S STATEMENT

This Corner Record was prepared by me or under my direction in conformance with the Land Surveyor's Act on 11-8-05
Signed Robert C. Hart P.L.S. or R.C.E. No. 5784

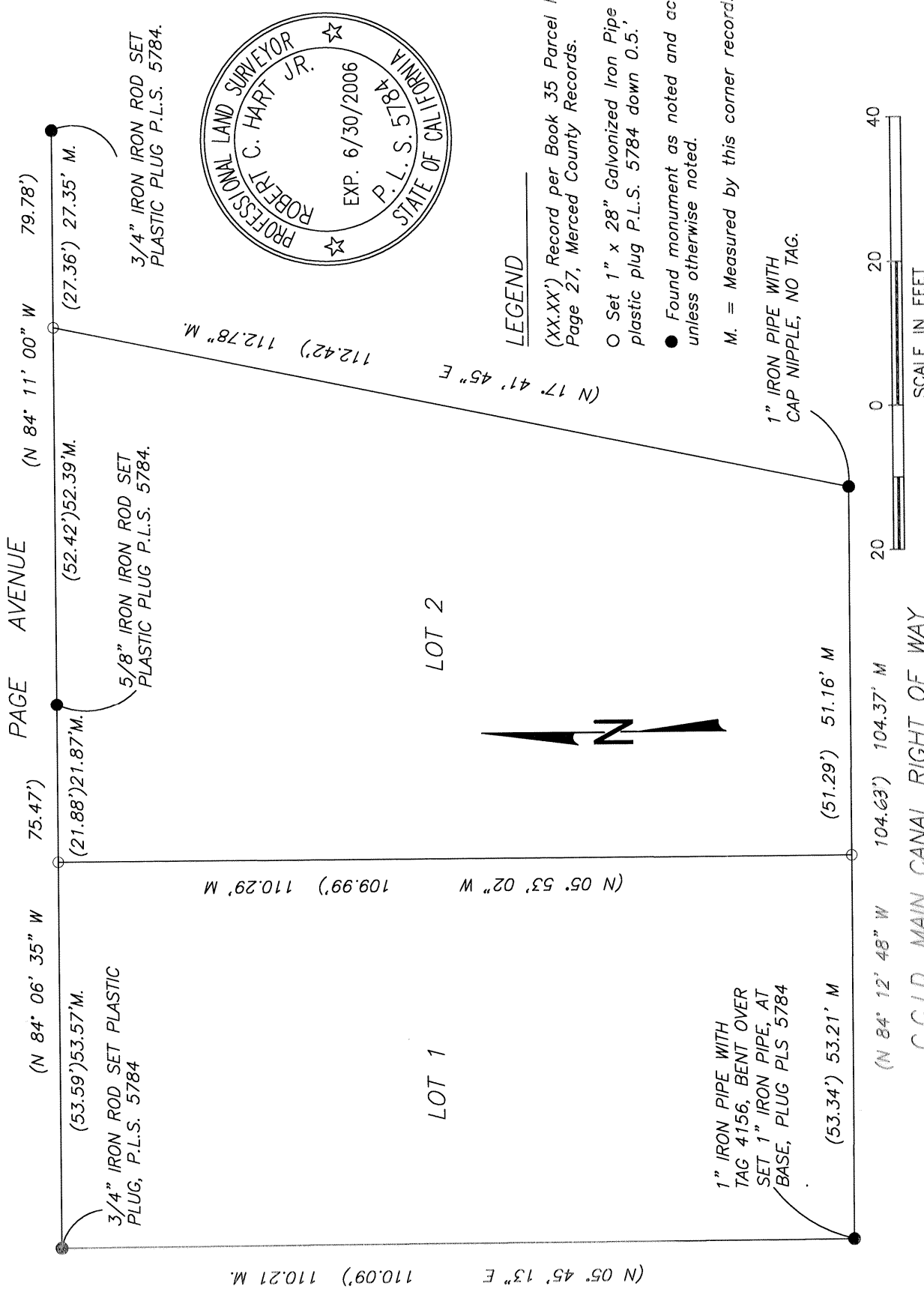


COUNTY SURVEYOR'S STATEMENT

This Corner Record was received November 8, 2005
and examined and filed December 5, 2005
Signed [Signature] P.L.S. or R.C.E. No. 4895
Title Dep. County Surveyor

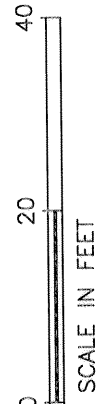


County Surveyor's Comment _____



LEGEND

- (XX.XX') Record per Book 35 Parcel Maps Page 27, Merced County Records.
- Set 1" x 28" Galvanized Iron Pipe with plastic plug P.L.S. 5784 down 0.5.'
- Found monument as noted and accepted, unless otherwise noted.
- M. = Measured by this corner record.



LOT 2

LOT 1



C.C.I.D. MAIN CANAL RIGHT OF WAY