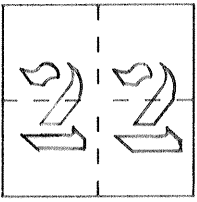


CORNER RECORD

Document Number 2308-JJJ

City of Los Banos, California County of Merced, California

Brief Legal Description Lot 26, "Map of Ashworth Addition" Vol. 12, Pg. 49 M.C.R.
Official Plat



CORNER TYPE

- Government Corner
- Meander
- Rancho
- Date of Survey _____
- Control
- Property
- Other

COORDINATES (Optional)

N. _____
 E. _____
 Zone _____ Datum _____
 Elev. _____

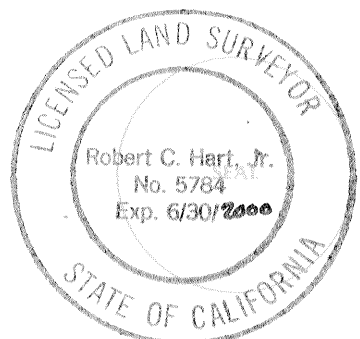
Corner — Left as found Found and tagged Established Reestablished Rebuilt

Identification and type of corner found: Evidence used to identify or procedure used to establish or reestablish the corner:
See sketch on reverse.

A description of the physical condition of the monument as found and as set or reset: _____
Found monuments in good condition, set plastic plug PLS 5784 over 5/8" iron bar.

SURVEYOR'S STATEMENT

This Corner Record was prepared by me or under my direction in conformance with the Land Surveyors' Act on May 30, 1998.
 Signed Robert C. Hart Jr L.S. or ~~REG.~~ Number 5784



COUNTY SURVEYOR'S STATEMENT

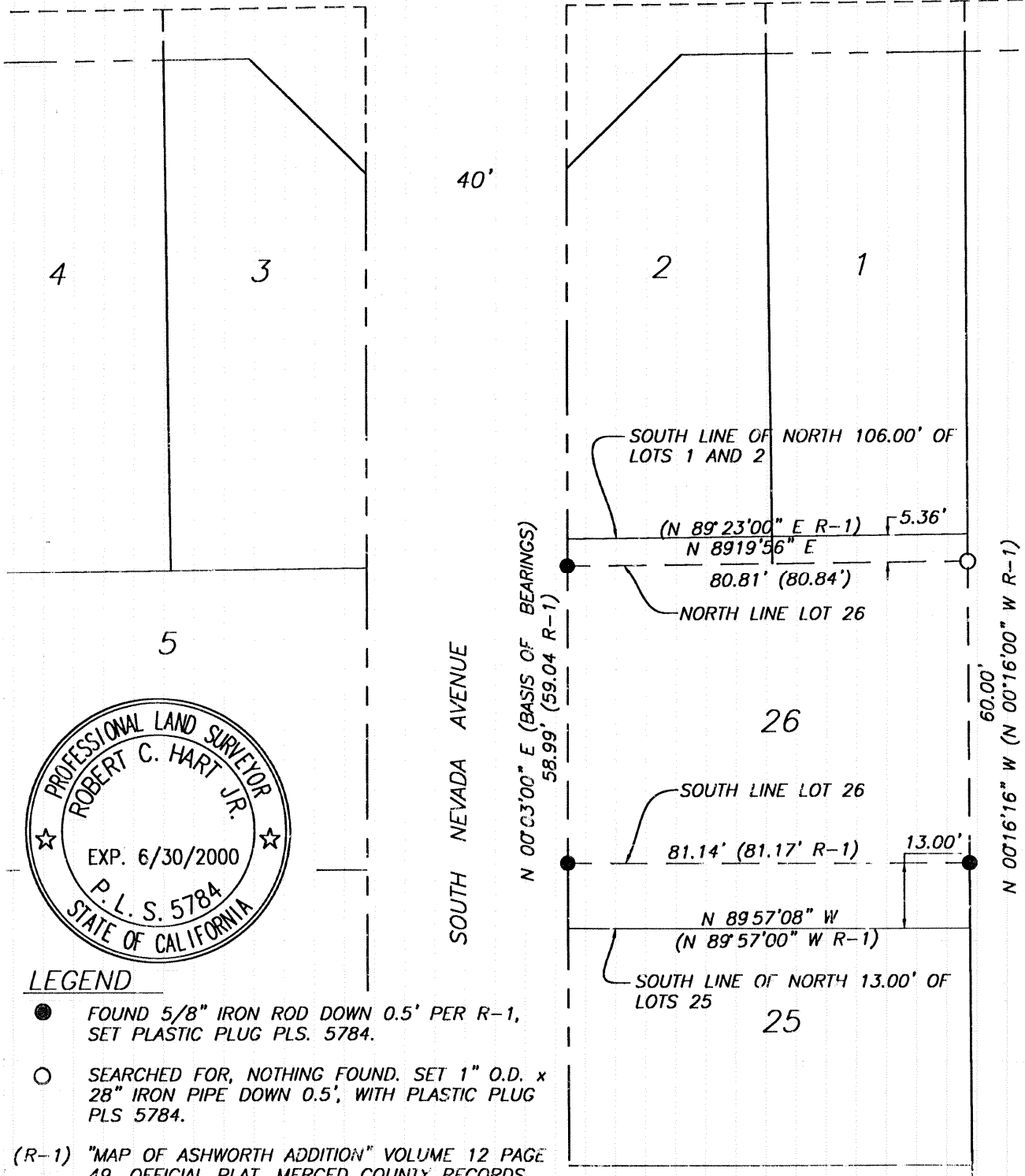
This Corner Record was received 6-15-98 1998 and examined and filed 7-15 1998.
 Signed Roy L. Turney Title Dep. Co. Sur



County Surveyor's Comment _____

PACHECO BOULEVARD

STATE ROUTE 152



LEGEND

- FOUND 5/8" IRON ROD DOWN 0.5' PER R-1, SET PLASTIC PLUG PLS. 5784.
- SEARCHED FOR, NOTHING FOUND. SET 1" O.D. x 28" IRON PIPE DOWN 0.5', WITH PLASTIC PLUG PLS 5784.

(R-1) "MAP OF ASHWORTH ADDITION" VOLUME 12 PAGE 49, OFFICIAL PLAT, MERCED COUNTY RECORDS.