

CORNER RECORD

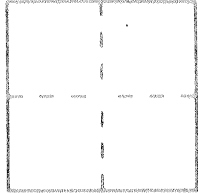
Document Number 2308 H.H.H.

City of LOS BANOS

County of MERCED, California

Brief Legal Description PROPERTY CORNERS

IN SECT 23 TIOSRIVE MDM



CORNER TYPE

COORDINATES (Optional)

Government Corner Control
Meander Property
Rancho Other
Date of Survey 3-23-93

N _____
E _____
Zone _____ Datum _____
Elev. _____

Corner - Left as found Found and tagged Established Reestablished Rebuilt

Identification and type of corner found: Evidence used to identify or procedure used to establish or reestablish the corner: 3/4" I.D. (1" O.D.) IRON PIPES AT APPARENT LOCATION OF NORTH CORNERS OF PARCEL 2 OF 42 PM 20 MER. Co. RECORDS.

A description of the physical condition of the monument as found and as set or reset: 3/4" I. PIPES ARE FLUSH IN SIDEWALK AND WILL BE DESTROYED BY CONSTRUCTION

SURVEYOR'S STATEMENT

This Corner Record was prepared by me or under my direction in conformance with the Land Surveyors' Act on 3-23 1993.

Signed Ralph Scheel L.S. or R.C.E. Number 3730
PARTY CHIEF, CALTRANS License Expiration Date _____

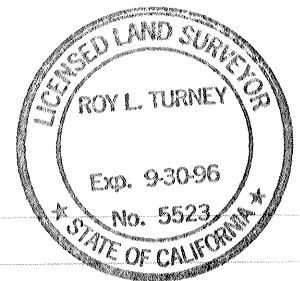


COUNTY SURVEYOR'S STATEMENT

This Corner Record was received 2-23 1994 and examined and filed 2-25 1994.

Signed Roy Turney Title DEP. CO. SUR.

County Surveyor's Comment _____

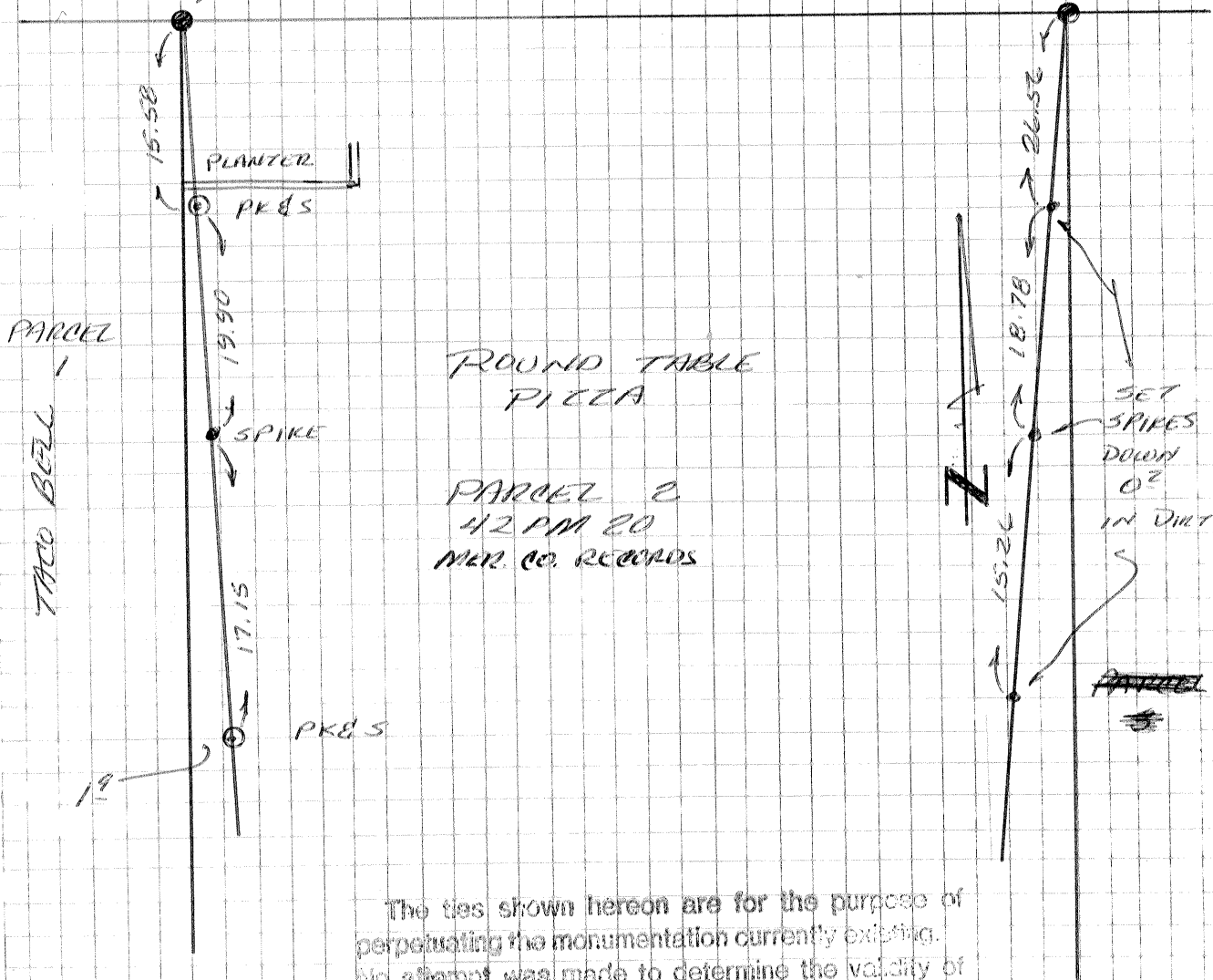


SECTION 23
TIO S R 106 MOM

PACHECO BLVD

ST. RT. 152

FD 3/4" I. PIPES (1" OD)
FLUSH IN CONC. WALK
PLASTIC TAG NOT LEGIBLE



ROUND TABLE
PIZZA

PARCEL 2
42 PM 20
MUR. CO. RECORDS

SET
SPIKES
DOWN
OR
IN DIRT

The ties shown hereon are for the purpose of
perpetuating the monumentation currently existing.
No attempt was made to determine the validity of
the monuments or their proper location in relation to
legal boundary lines in the area.