

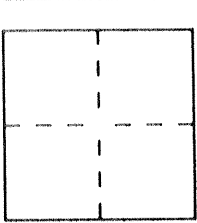
CORNER RECORD

Document Number 2308 FFF

City of LOS BANOS

County of MERCED, California

Brief Legal Description SE. COR. INTERSECTION 10th & PACHECO



SECT 23
TIOS RIOG
MDM

CORNER TYPE

Government Corner Control
Meander Property
Rancho Other
Date of Survey 3-12-93

COORDINATES
(Optional)

N. 202934.0
E. 1900353.3
Zone 3 Datum 27
Elev. _____

Corner — Left as found Found and tagged Established Reestablished Rebuilt

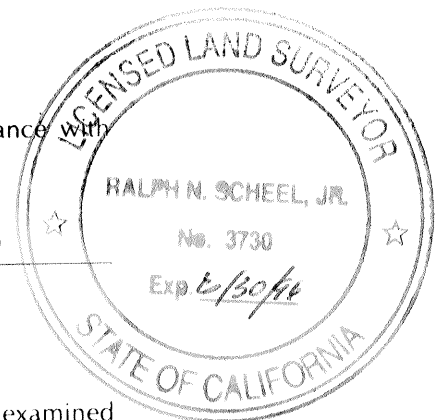
Identification and type of corner found: Evidence used to identify or procedure used to establish or reestablish the corner: 1 1/2" IRON PIPE AT SOUTH EAST CORNER OF INTERSECTION OF 10th ST. & PACHECO BLVD. SEE MACHADO SUBDIVISION 10 MAPS 53 MERCED CO. REC.

A description of the physical condition of the monument as found and as set or reset: MONUMENT IN GOOD CONDITION, DOWN 0.2 IN ASPHALT PARKING AREA AT BACK OF WALK. WILL BE DESTROYED BY CONSTRUCTION

SURVEYOR'S STATEMENT

This Corner Record was prepared by me or under my direction in conformance with the Land Surveyors' Act on 3-12 1993.

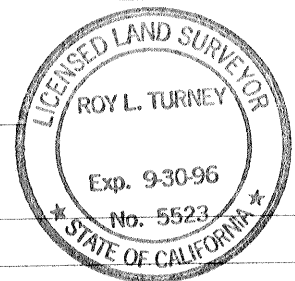
Signed Ralph Scheel L.S. or R.C.E. Number 3730
PARTY CHIEF, CALTRANS



COUNTY SURVEYOR'S STATEMENT

This Corner Record was received 2-23 1994 and examined and filed 2-25 1994.

Signed Roy Turney Title DEP CO. SUR

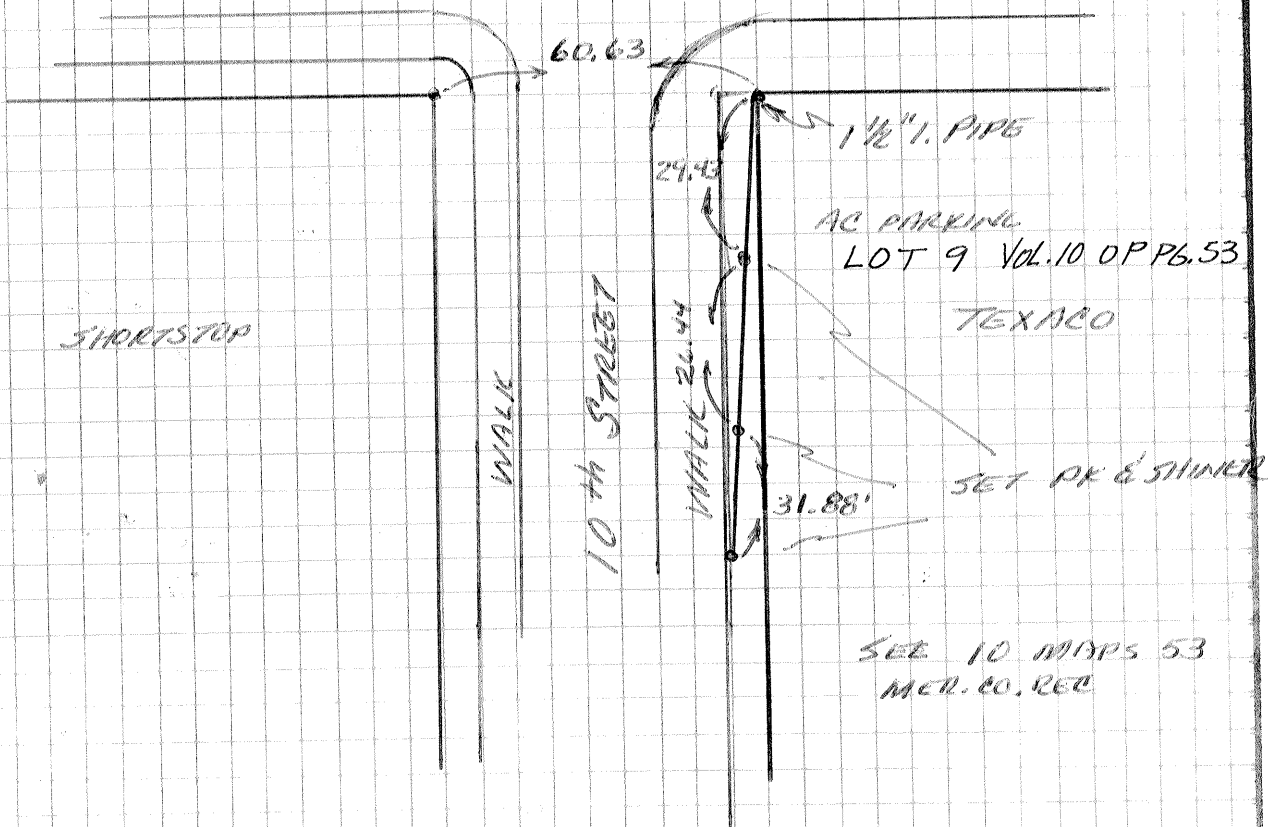


County Surveyor's Comment _____

SECT 23 T105 RIDE MDM
 1 1/2" Iron Pipe at
 SE cor. INT 10th & Pacheco

PACHECO BLVD.

ST. RT. 152



SEE 10 MAPS 53
 MCH. CO. REC

The lines shown hereon are for the purpose of perpetuating the monumentation currently on hand. No attempt was made to determine the validity of the monuments or their proper location in relation to legal boundary lines in the area.