

CORNER RECORD

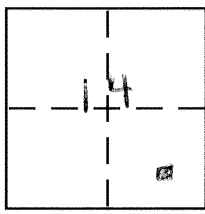
Document Number 2307-H

City of LOS BANOS

County of MERCED, California

Brief Legal Description LOTS 1-4, BLOCK 13

11 D.P. 48 M.C.R.



CORNER TYPE

Government Corner Control
Meander Property
Rancho Other
Date of Survey 9-22-06

COORDINATES (Optional)

N. _____
E. _____
Zone _____ NAD27 NAD83
NAD83 Epoch _____
Elev. _____
Vert. Datum: NGVD29 NAVD88
Meas. Units: Metric Imperial

Corner - Left as found Found and tagged Established Reestablished Rebuilt

Identification and type of corner found: Evidence used to identify or procedure used to establish or reestablish the corner:
SEE SKETCH

A description of the physical condition of the monument as found and as set or reset:
SEE SKETCH

SURVEYOR'S STATEMENT

This Corner Record was prepared by me or under my direction in conformance with the Land Surveyor's Act on 11-8-06

Signed [Signature] P.L.S. or R.C.E. No. _____



COUNTY SURVEYOR'S STATEMENT

This Corner Record was received November 13, 2006

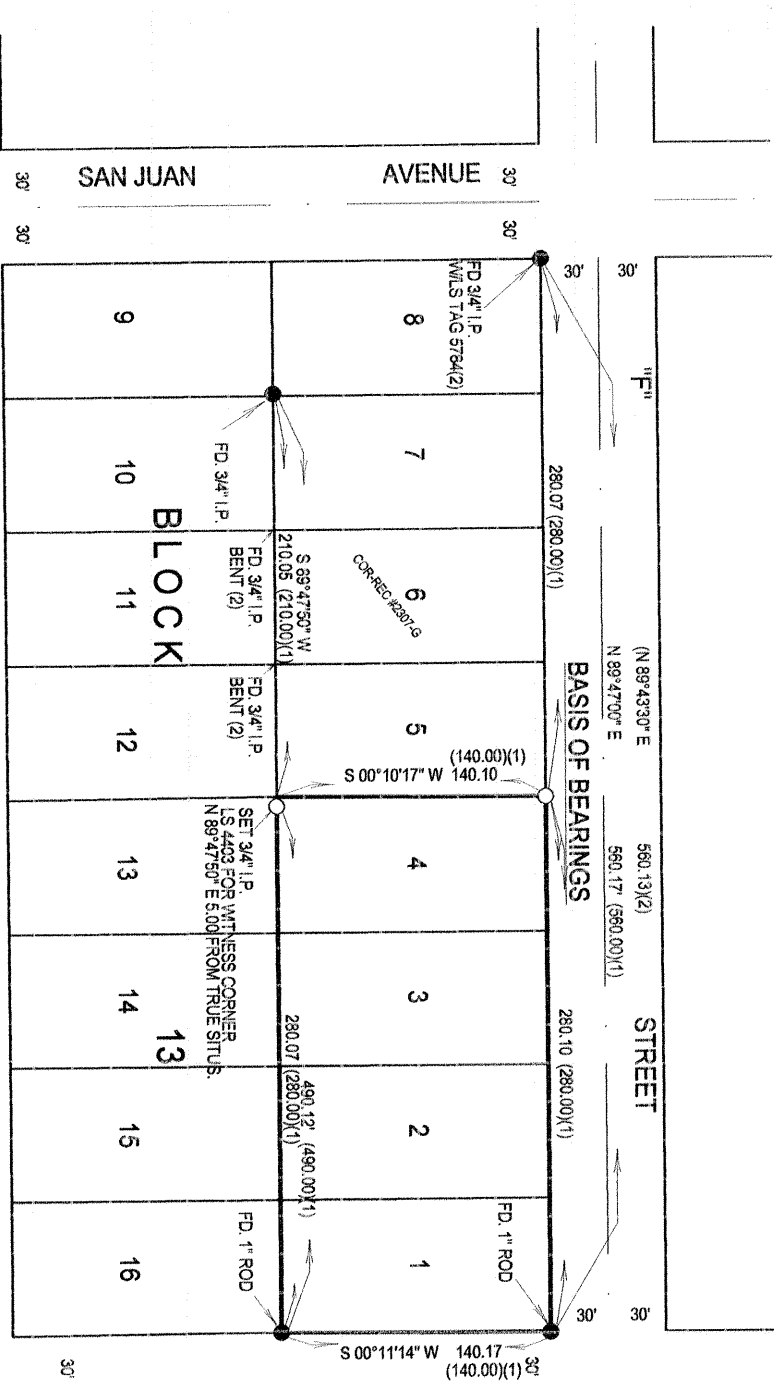
and examined and filed November 17, 2006

Signed [Signature] P.L.S. or R.C.E. No. 4895

Title Dep. County Surveyor

County Surveyor's Comment _____





BASIS OF BEARINGS

N 89°47'00" E FOR THE NORTH LINE OF BLOCK 13 AS SHOWN ON MAP OF SPADAFORE SUBDIVISION, VOLUME 11 O.P. PAGE 48, MERCED COUNTY RECORDS.

REFERENCES

1. MAP OF SPADAFORE SUBDIVISION, VOLUME 11 OF OFFICIAL PLATS PAGE 48, MERCED COUNTY RECORDS.
2. CORNER RECORD #297-G

LEGEND

- SET 3/4" I.P. LS 4403
- ⊕ FOUND AND ACCEPTED MONUMENT AS NOTED

