

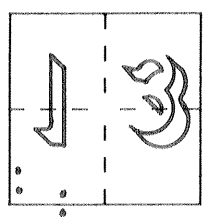
# CORNER RECORD

Document Number 2307 A & 2307 B

City of Los Banos

County of Merced, California

Brief Legal Description See reverse side.



### CORNER TYPE

Government Corner  Control   
 Meander  Property   
 Rancho  Other   
 Date of Survey 1-30-98

### COORDINATES (Optional)

N. \_\_\_\_\_  
 E. \_\_\_\_\_  
 Zone \_\_\_\_\_ Datum \_\_\_\_\_  
 Elev. \_\_\_\_\_

Corner — Left as found  Found and tagged  Established  Reestablished  Rebuilt

Identification and type of corner found: Evidence used to identify or procedure used to establish or reestablish the corner:

Property Corners

See sketch on reverse side.

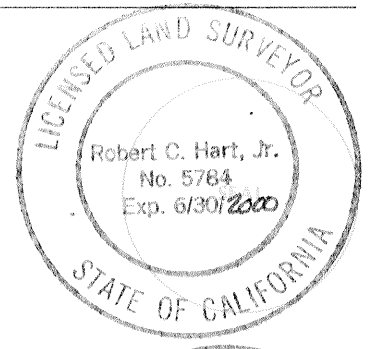
A description of the physical condition of the monument as found and as set or reset: \_\_\_\_\_

See sketch on reverse side.

### SURVEYOR'S STATEMENT

This Corner Record was prepared by me or under my direction in conformance with  
 the Land Surveyors' Act on February 23, 1998.

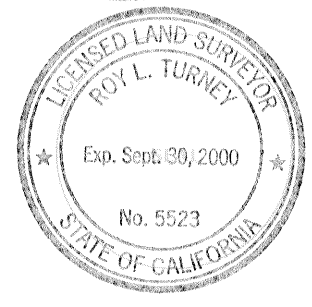
Signed Robert C. Hart, Jr. L.S. or R.C.E. Number 5784



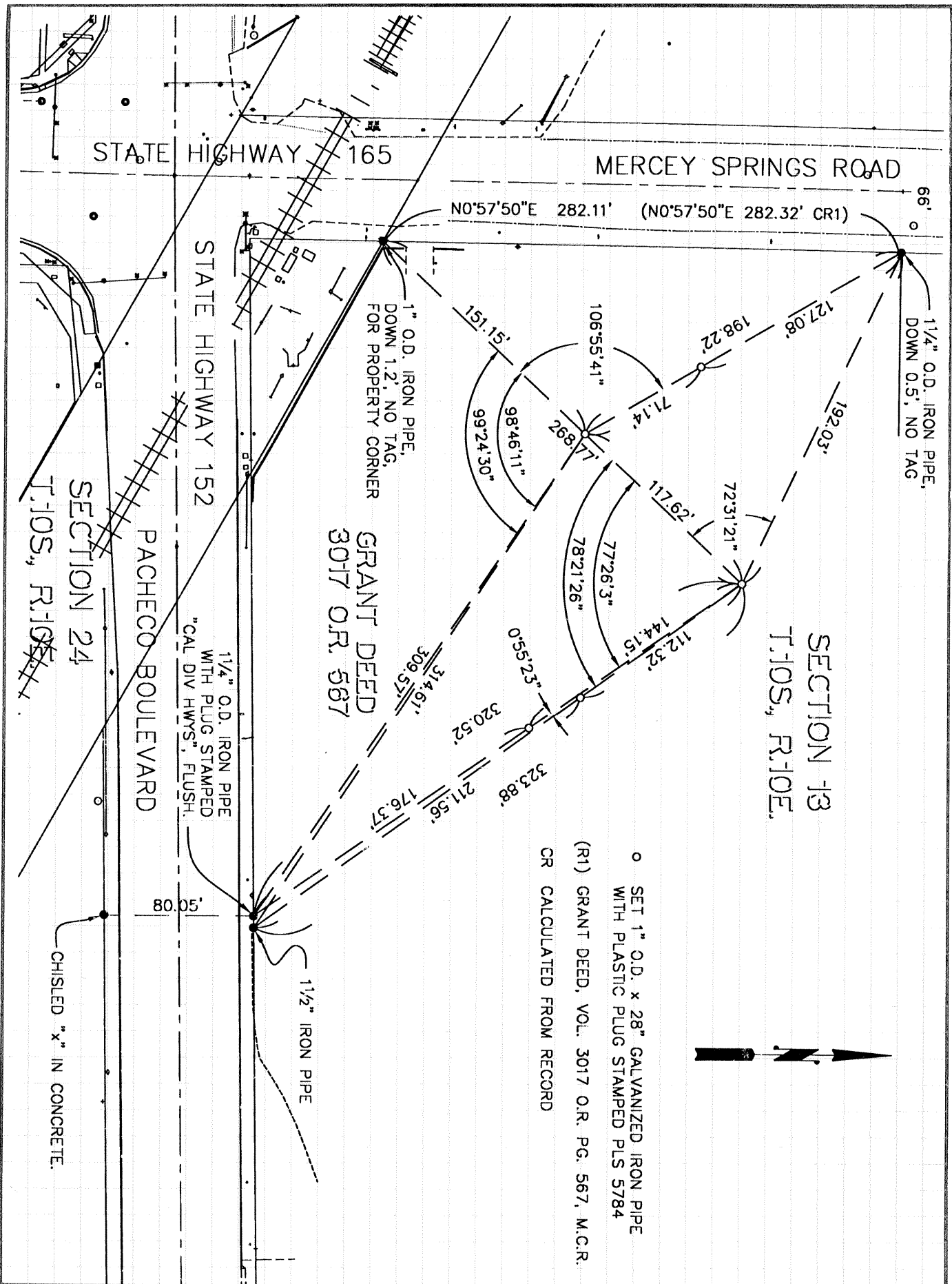
### COUNTY SURVEYOR'S STATEMENT

This Corner Record was received FEB 25 1998 and examined  
 and filed MARCH 5, 1998.

Signed Roy L. Turney Title DEP CO. SUR.



County Surveyor's Comment \_\_\_\_\_



○ SET 1" O.D. x 28" GALVANIZED IRON PIPE  
WITH PLASTIC PLUG STAMPED PLS 5784  
(R1) GRANT DEED, VOL. 3017 O.R. PG. 567, M.C.R.  
OR CALCULATED FROM RECORD

