

COI IR RECORD

COUNTY OF Merced T. 10S R. 10E Mt. Diablo MERIDIAN CALIFORNIA
CORNER TYPE: GOV'T. CORNER MEANDER RANCHO CONTROL OTHER
CORNER IDENTIFICATION — DATE OF VISIT March 15, 19 78



Property Corner

CORNER — LEFT AS FOUND FOUND AND TAGGED REESTABLISHED OBLITERATED CORNER REBUILT

PHYSICAL DESCRIPTION OF CORNER FOUND; EVIDENCE AND METHOD USED TO IDENTIFY OR REESTABLISH

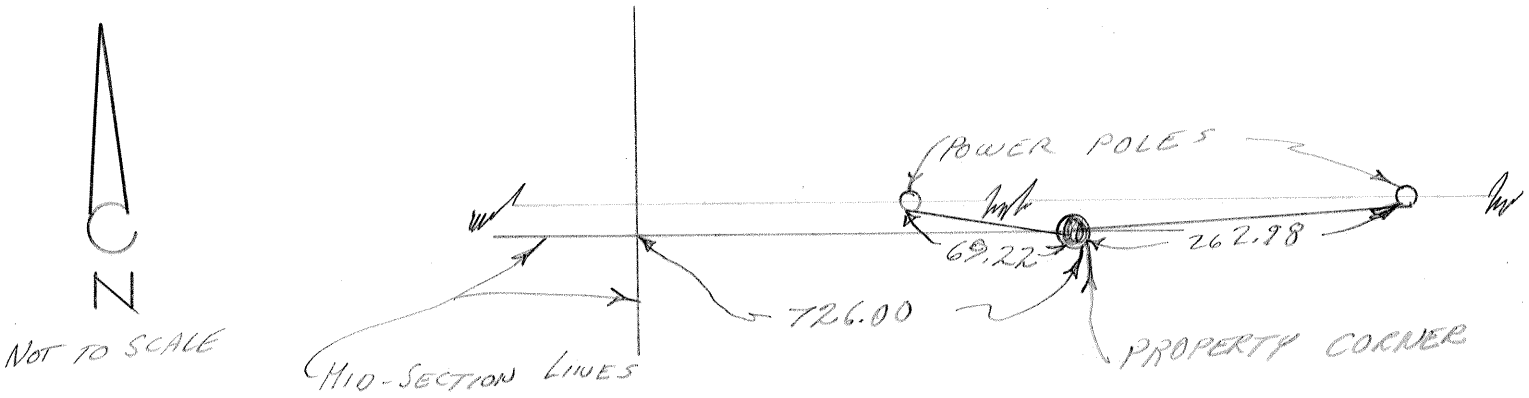
5/8" diameter steel rod 6" down

PHYSICAL DESCRIPTION OF MONUMENTS REBUILT OR PERPETUATED

CALIFORNIA COORDINATE SYSTEM ORDER: FIRST SECOND THIRD
STATIONS USED: NGS (USC & GS) STATE COUNTY OTHER STATION _____ STATION _____
ZONE _____ ELEVATION _____ NORTHINGS (Y) _____ EASTINGS (X) _____

SKETCH: (Include reference tie or witness points, remarks and topo of area)

1. 69.22 Easterly of nail & shiner in power pole
2. 262.98 Westerly of nail & shiner in power pole
3. 726.00 Easterly of center 1/4 corner, Section 28



SURVEYOR'S CERTIFICATE

THIS CORNER RECORD WAS PREPARED BY ME OR UNDER MY DIRECTION IN CONFORMANCE WITH THE LAND SURVEYORS ACT ON March 15 19 78

SIGNED: Johnny E. Davis
L.S. or R.C.E. No.: L.S. 4156

SEAL

COUNTY SURVEYOR'S CERTIFICATE

THE CORNER RECORD WAS RECEIVED _____ 19_____
AND EXAMINED AND FILED _____ 19_____
BY: _____

TITLE: _____

DOCUMENT No. 2285B

STATEMENT ON BACK OF SHEET

YES NO