

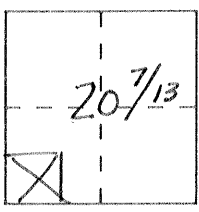
CORNER RECORD

DPD-3011 (NEW 11/93)

Document Number 2276 0-P

City of _____ County of Merced, California

Brief Legal Description Property Corner in SW 1/4 of SW 1/4, Sec. 20, T.7S., R.13E., MDM



CORNER TYPE

- Government Corner
- Meander
- Rancho
- Date of Survey April 1, 1996
- Control
- Property
- Other

Coordinates (Optional)

N. _____
 E. _____
 Zone _____ NAD: '27 _____ '83 _____
 NAD-83 Epoch _____
 Elevation _____

Corner — Left as found Found and tagged Established Reestablished Rebuilt

Identification and type of corner found: Evidence used to identify or procedure used to establish or reestablish the corner:

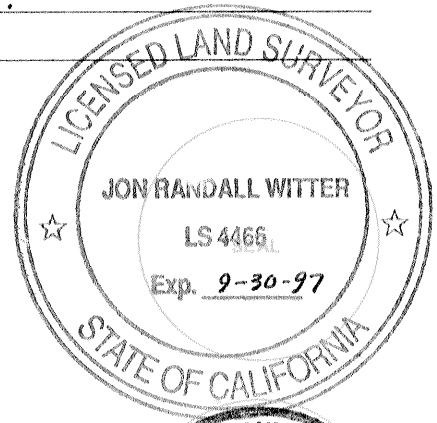
Found 3/4" Iron Pipes, per PM42-16, without tags; and,
Found 3/4" Iron Pipes with plug stamped LS 3733, per PM42-16

A description of the physical condition of the monument as found and as set or reset: Monuments on south line of Parcel A, PM42-16, referenced to witness monuments ^{if in} ~~for~~ jeopardy from construction and reset if destroyed during construction of a new bridge over Black Rascal Creek.

SURVEYOR'S STATEMENT

This Corner Record was prepared by me or under my direction in conformance with the Land Surveyors' Act on June 7, 1996.

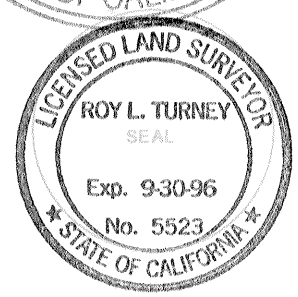
Signed [Signature] L.S. or R.C.E. Number 4466
 For the State of California
 Department of Transportation



COUNTY SURVEYOR'S STATEMENT

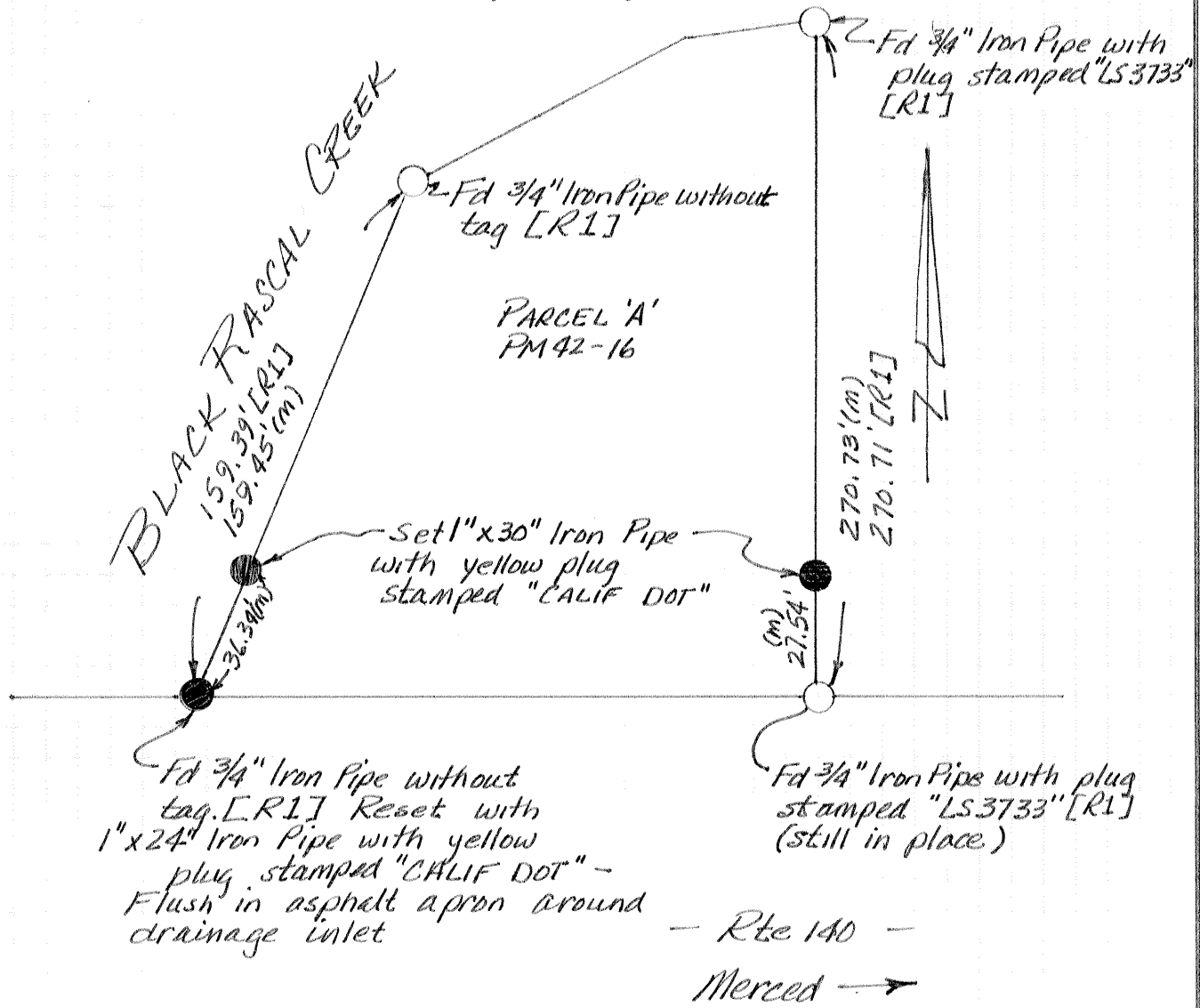
This Corner Record was received JULY 1996 and examined and filed JULY 15, 1996.

Signed [Signature] Title DEP. CO. SUR.



County Surveyor's Comment _____

SW 1/4 of SW 1/4 of Sec. 20, T.7S., R.13E., MDM



NOTES:

[R1] According to map PM 42-16, M.C.R.

(m) Measured, this survey