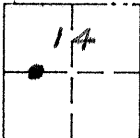


CORNER RECORD

COUNTY OF MERCED T. 9S R. 14E M.O.B.E.M. MERIDIAN CALIFORNIA

CORNER TYPE: GOVT. CORNER MEANDER RANCHO CONTROL OTHER

CORNER IDENTIFICATION - DATE OF VISIT 3-26 1990 SEE CORNER RECORD 2242-E



N.W. CORNER LOT 22, BLOCK 14 (SECTION 14)
BLISS RANCH SUBDIVISION VOL. 7, DP, PG. 41, M.C.R.

CORNER — LEFT AS FOUND FOUND AND TAGGED REESTABLISHED OBLITERATED CORNER REBUILT

PHYSICAL DESCRIPTION OF CORNER FOUND; EVIDENCE AND METHOD USED TO IDENTIFY OR REESTABLISH.

FO. 3/4" IP WITH L.S. 4156 TAG - 4 FEET DEEP

PHYSICAL DESCRIPTION OF MONUMENTS REBUILT OR PERPETUATED.

SET 5/8 BAR WITH RCE 10990 PLASTIC CAP - ON SURFACE

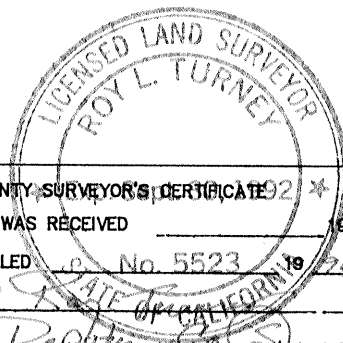
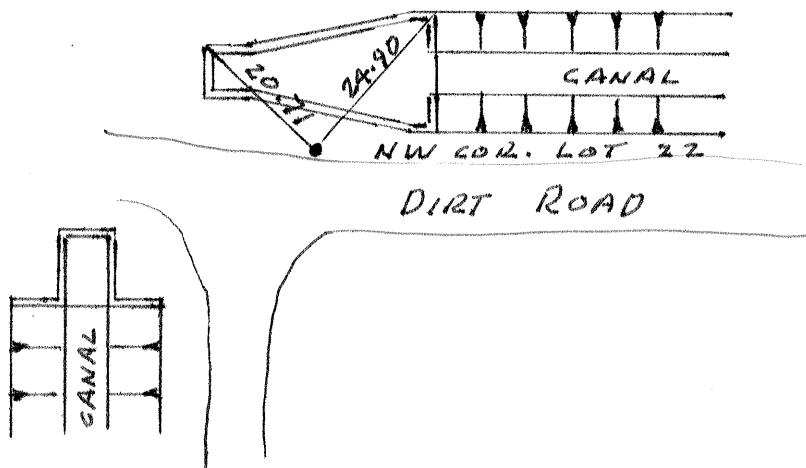
CALIFORNIA COORDINATE SYSTEM ORDER: FIRST SECOND THIRD

STATIONS USED: NGS (USC & GS) STATE COUNTY OTHER STATION _____ STATION _____

ZONE _____ ELEVATION _____ NORTHINGS (Y) _____ EASTINGS (X) _____

(Fold)

SKETCH: (include reference tie or witness points, remarks and topo of area)



SURVEYOR'S CERTIFICATE

THIS CORNER RECORD WAS PREPARED BY ME OR UNDER MY DIRECTION IN CONFORMANCE WITH THE LAND SURVEYORS ACT ON MAY 15 1990

SIGNED

Ralph Turney

L.S. or R.C.E. No. LS 5354

EXP. 12-31-91 SEAL

COUNTY SURVEYOR'S CERTIFICATE

THE CORNER RECORD WAS RECEIVED 19 AND EXAMINED AND FILED No. 5523 1990

BY: *Roy L. Turney* TITLE: *Deputy*

DOCUMENT No. 2242-A

STATEMENT ON BACK OF SHEET YES NO