

CORNER RECORD

COUNTY OF MERCED T. 5S R. 12E M.D. MERIDIAN CALIFORNIA
 CORNER TYPE: GOVT. CORNER MEANDER RANCHO CONTROL OTHER
 CORNER IDENTIFICATION — DATE OF VISIT October 24 1979



Southwest corner of section 1.
 Purpose: To replace corner destroyed during
 County Road reconstruction.

CORNER — LEFT AS FOUND FOUND AND TAGGED REESTABLISHED OBLITERATED CORNER REBUILT

PHYSICAL DESCRIPTION OF CORNER FOUND; EVIDENCE AND METHOD USED TO IDENTIFY OR REESTABLISH

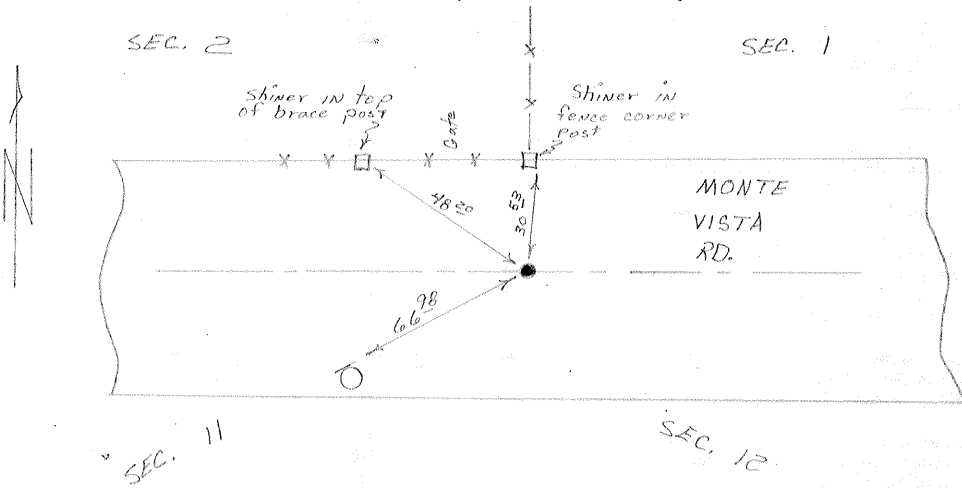
Found 1" iron pipe. Reestablished after road construction by using swing ties in field book 710 page 48.

PHYSICAL DESCRIPTION OF MONUMENTS REBUILT OR PERPETUATED

Set 1 1/4" outside diameter iron pipe, 30" long. Tagged "Merced County Surveyor"

CALIFORNIA COORDINATE SYSTEM ORDER: FIRST SECOND THIRD
 STATIONS USED: NGS (USC & GS) STATE COUNTY OTHER STATION _____ STATION _____
 ZONE _____ ELEVATION _____ NORTHINGS (Y) _____ EASTINGS (X) _____

SKETCH: (Include reference tie or witness points, remarks and topo of area)



Corner is:
 1. 18° east of pole line south
 2. 26° to pole line west

SURVEYOR'S CERTIFICATE
 THIS CORNER RECORD WAS PREPARED BY ME OR UNDER MY DIRECTION IN CONFORMANCE WITH THE LAND SURVEYORS ACT ON 2/5 No. 14648
 SIGNED: [Signature]
 L.S. or R.C.E. No.: _____ CIVIL
 STATE OF CALIFORNIA

COUNTY SURVEYOR'S CERTIFICATE
 THE CORNER RECORD WAS RECEIVED AND EXAMINED AND FILED No. 14648
 BY: [Signature]
 TITLE: CIVIL
 DOCUMENT No. 2234
 STATEMENT ON BACK OF SHEET YES NO