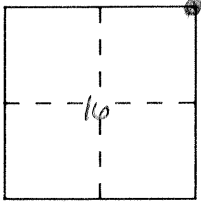


CORNER RECORD

Document Number 2232

City of _____ County of Merced, California

Brief Legal Description N.E. Corner Section 16 7/14



CORNER TYPE

Government Corner Control
 Meander Property
 Rancho Other
 Date of Survey _____

COORDINATES (Optional)

N. _____
 E. _____
 Zone _____ Datum _____
 Elev. _____

Corner — Left as found Found and tagged Established Reestablished Rebuilt

Identification and type of corner found: Evidence used to identify or procedure used to establish or reestablish the corner:

See back.

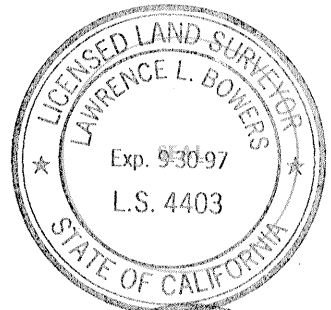
A description of the physical condition of the monument as found and as set or reset: _____

Monument box set over both existing monuments.

SURVEYOR'S STATEMENT

This Corner Record was prepared by me or under my direction in conformance with the Land Surveyors' Act on Sept. 7 1993.

Signed [Signature] L.S. or R.C.E. Number _____

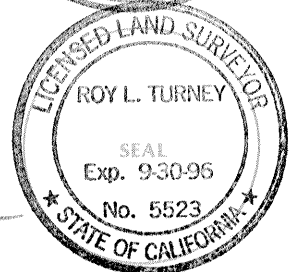


COUNTY SURVEYOR'S STATEMENT

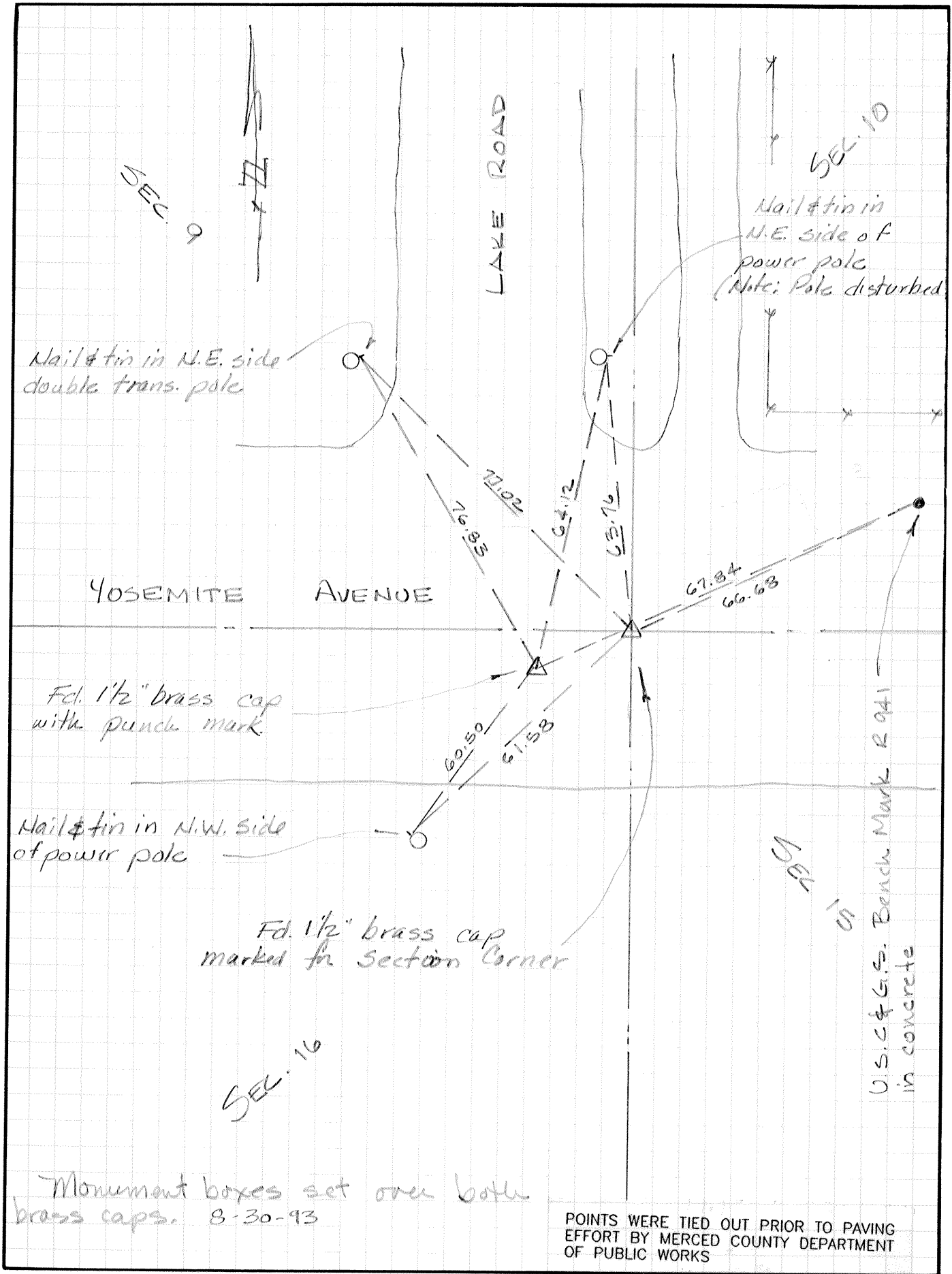
This Corner Record was received _____ 19____ and examined

and filed SEPT. 1993.

Signed [Signature] Title DEPUTY CO. SURVEYOR



County Surveyor's Comment _____



SEC. 9

LAKE ROAD

SEC. 10

Nail & tin in N.E. side double trans. pole

Nail & tin in N.E. side of power pole
(Note: Pole disturbed 8-30-93)

YOSEMITE AVENUE

Fd. 1 1/2" brass cap with punch mark

Nail & tin in N.W. side of power pole

Fd. 1 1/2" brass cap marked for Section Corner

SEC. 16

U.S.C. & G.S. Bench Mark R 941 in concrete

Monument boxes set over both brass caps. 8-30-93

POINTS WERE TIED OUT PRIOR TO PAVING EFFORT BY MERCED COUNTY DEPARTMENT OF PUBLIC WORKS