

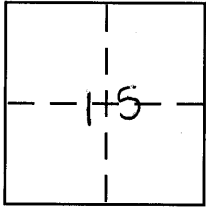
CORNER RECORD

Document Number 2232-N

City of _____

County of MERCED, California

Brief Legal Description LOT 6 FANCHER SUBDIVISION 80.P. 49 M.C.R.



CORNER TYPE

Government Corner Control
Meander Property
Rancho Other
Date of Survey 1-30-08

COORDINATES (Optional)

N. _____
E. _____
Zone _____ NAD27 NAD83
NAD83 Epoch _____
Elev. _____
Vert. Datum: NGVD29 NAVD88
Meas. Units: Metric Imperial

Corner - Left as found Found and tagged Established Reestablished Rebuilt

Identification and type of corner found: Evidence used to identify or procedure used to establish or reestablish the corner:

SEE SKETCH

A description of the physical condition of the monument as found and as set or reset:

SEE SKETCH

SURVEYOR'S STATEMENT

This Corner Record was prepared by me or under my direction in conformance with the Land Surveyor's Act on March 31 2008

Signed [Signature] P.L.S. or B.C.E. No. _____



COUNTY SURVEYOR'S STATEMENT

This Corner Record was received April 3, 2008

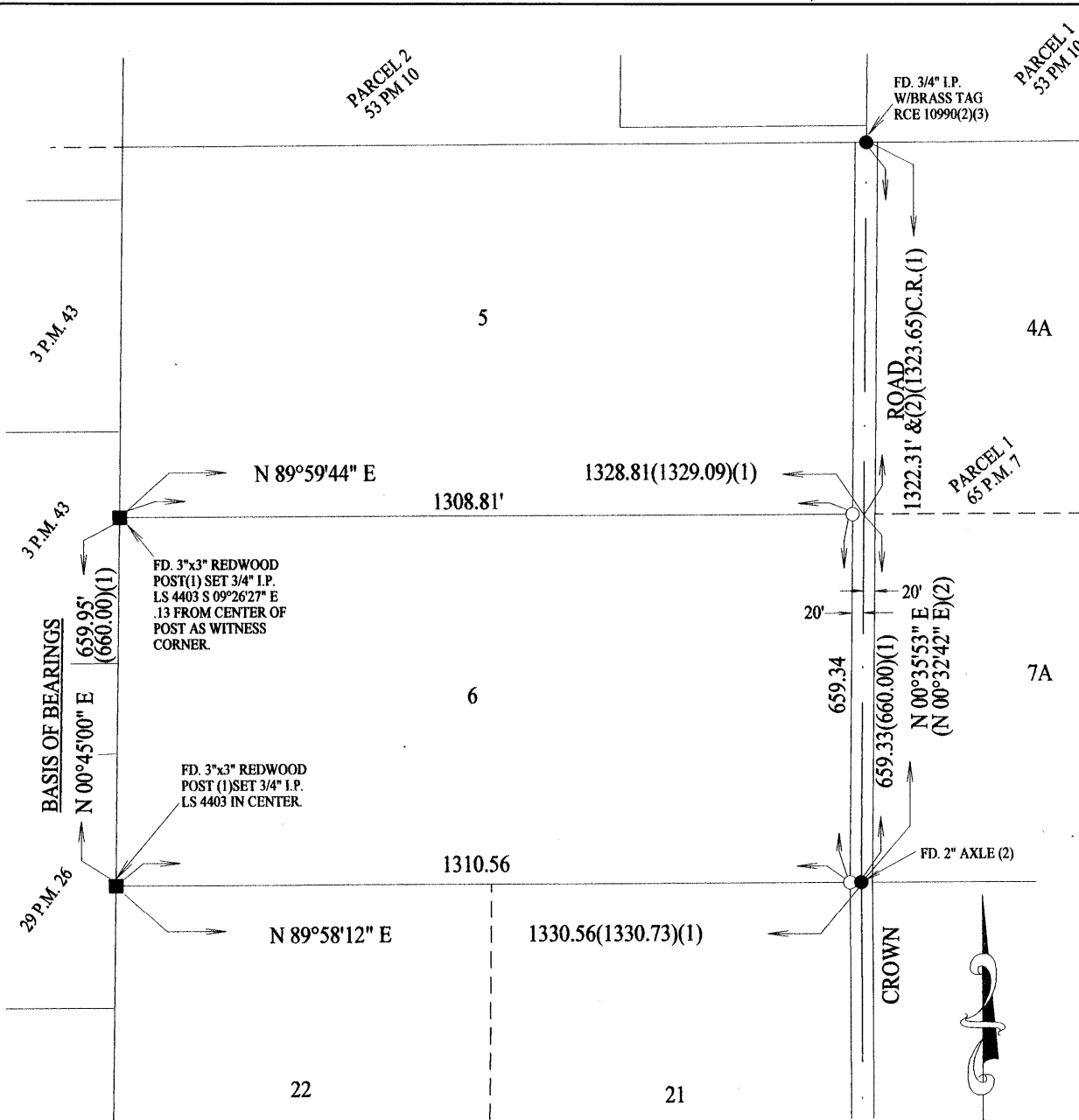
and examined and filed April 4, 2008

Signed [Signature] P.L.S. or B.C.E. No. 4895

Title Dep. County Surveyor



County Surveyor's Comment _____



BASIS OF BEARINGS

N 00°45'00" E FOR THE WEST LINE OF LOT 6 AS SHOWN ON THE MAP OF THE FANCHER SUBDIVISION RECORDED IN VOLUME 8 OF OFFICIAL PLATS, AT PAGE 49, MERCED COUNTY RECORDS.

REFERENCES

1. MAP OF THE FANCHER SUBDIVISION
8 O.P. 49 M.C.R.
2. PARCEL MAP FOR BANDONI, SHACKLEFORD, &
ARTHUR. 65 P.M. 7 M.C.R.
3. PARCEL MAP FOR G. WAYNE SYMES
53 P.M. 10 M.C.R.

LEGEND

- SET 3/4" I.P. LS 4403
- MONUMENT FOUND AND ACCEPTED AS NOTED