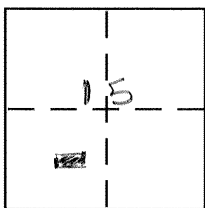


CORNER RECORD

Document Number 2232-M

City of _____ County of MERCED, California

Brief Legal Description Parcel 3, SPM29, M.C.R.



7/14

CORNER TYPE

- Government Corner Control
- Meander Property
- Rancho Other
- Date of Survey _____

COORDINATES (Optional)

- N. _____
- E. _____
- Zone _____ NAD27 NAD83
- NAD83 Epoch _____
- Elev. _____
- Vert. Datum: NGVD29 NAVD88
- Meas. Units: Metric Imperial

Corner - Left as found Found and tagged Established Reestablished Rebuilt

Identification and type of corner found: Evidence used to identify or procedure used to establish or reestablish the corner:

See Sketch

A description of the physical condition of the monument as found and as set or reset:

See Sketch

SURVEYOR'S STATEMENT

This Corner Record was prepared by me or under my direction in conformance with the Land Surveyor's Act on 9-29-05

Signed [Signature] P.L.S or R.C.E. No. 3-15-06



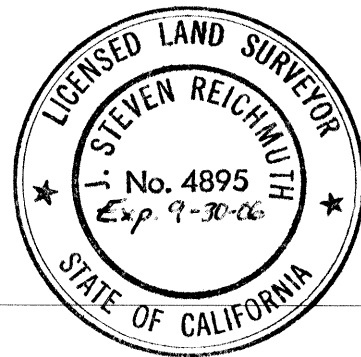
COUNTY SURVEYOR'S STATEMENT

This Corner Record was received March 16, 2006

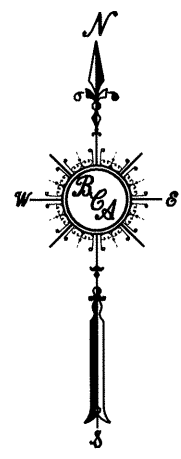
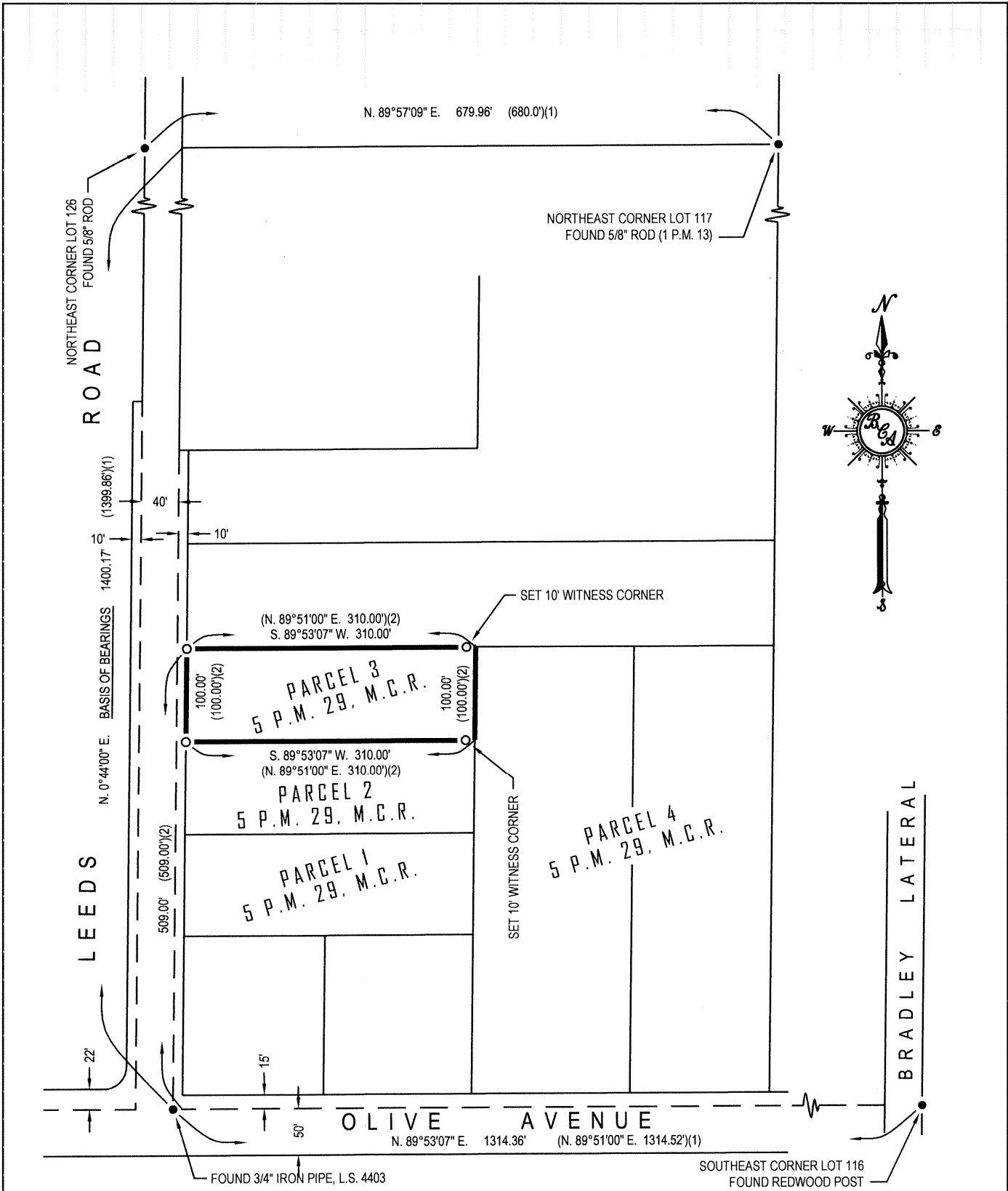
and examined and filed March 17, 2006

Signed [Signature] P.L.S or R.C.E. No. 4895

Title Dep. County Surveyor



County Surveyor's Comment _____



REFERENCES:

- (1) Map of Bradley's Addition No. 3, 4 O.P. 43, M.C.R.
- (2) Parcel Map for R.D. Higginbotham, 5 P.M. 29, M.C.R.

LEGEND:

- Found and accepted monument as indicated
- Set a 3/4" iron pipe, L.S. 4403

