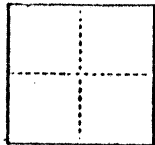


CORNER RECORD

COUNTY OF MERCED T. 7S R. 14E M.D. B. & MERIDIAN CALIFORNIA

CORNER TYPE: GOVT. CORNER MEANDER RANCHO CONTROL OTHER
CORNER IDENTIFICATION — DATE OF VISIT September 16, 1985



CORNER — LEFT AS FOUND FOUND AND TAGGED REESTABLISHED OBLITERATED CORNER REBUILT

PHYSICAL DESCRIPTION OF CORNER FOUND; EVIDENCE AND METHOD USED TO IDENTIFY OR REESTABLISH

Found corners shown on "Parcel Map for Bert K. Murphy" Volume 1, Parcel Maps, Page 13, Merced County Records.

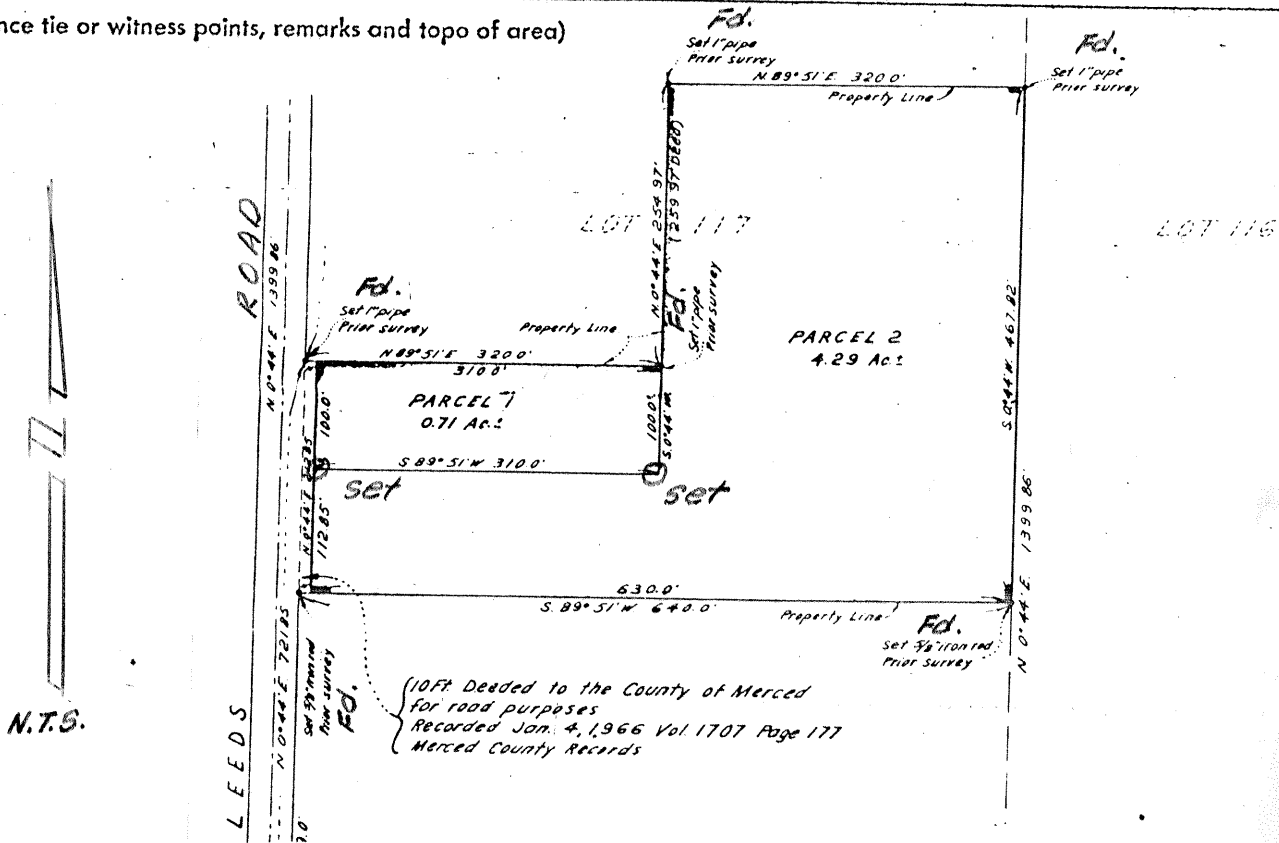
PHYSICAL DESCRIPTION OF MONUMENTS REBUILT OR PERPETUATED

Set 3/4" iron pipe tagged "L.S. 3718" at Southeast and Southwest corners of Parcel 1 (No monuments were set originally)

CALIFORNIA COORDINATE SYSTEM ORDER: FIRST SECOND THIRD
STATIONS USED: NGS (USC & GS) STATE COUNTY OTHER STATION _____ STATION _____
ZONE _____ ELEVATION _____ NORTHINGS (Y) _____ EASTINGS (X) _____

(Fold)

SKETCH: (Include reference tie or witness points, remarks and topo of area)

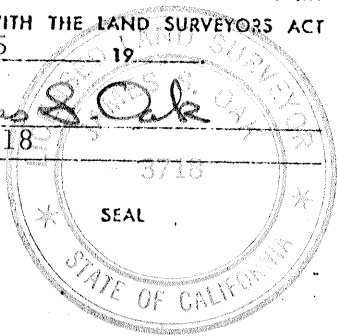


SURVEYOR'S CERTIFICATE

THIS CORNER RECORD WAS PREPARED BY ME OR UNDER MY DIRECTION IN CONFORMANCE WITH THE LAND SURVEYORS ACT OF 1907, September 25, 1985

SIGNED: James S. Oak
L.S. 3718

E.S. or R.C.E. No.: _____



COUNTY SURVEYOR'S CERTIFICATE

THE CORNER RECORD WAS RECEIVED Sept 25, 1985 AND EXAMINED AND FILED Oct. 2, 1985

BY: Ray King
TITLE: Dep. Co. Surveyor

DOCUMENT No. 2232 I

STATEMENT ON BACK OF SHEET

YES NO