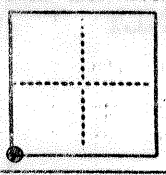


2124

CORNER RECORD

CITY OF MERCED T. B.S. R. 13 E MDB & M MERIDIAN CALIFORNIA
 CORNER TYPE: GOV'T. CORNER MEANDER RANCHO CONTROL OTHER
 CORNER IDENTIFICATION — DATE OF VISIT APRIL 06 19 84



S.W. COR SEC 8

CORNER — LEFT AS FOUND FOUND AND TAGGED REESTABLISHED OBLITERATED CORNER REBUILT

PHYSICAL DESCRIPTION OF CORNER FOUND; EVIDENCE AND METHOD USED TO IDENTIFY OR REESTABLISH

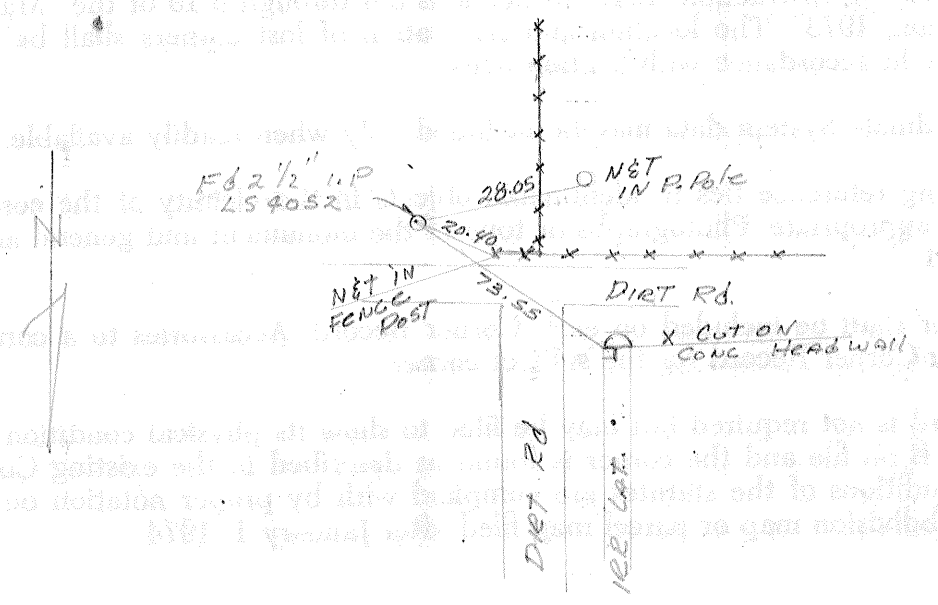
Fb 2 1/2" I.P. with tag LS 4052
 1' Above Ground

PHYSICAL DESCRIPTION OF MONUMENTS REBUILT OR PERPETUATED

CALIFORNIA COORDINATE SYSTEM ORDER: FIRST SECOND THIRD
 STATIONS USED: NGS (USC & GS) STATE COUNTY OTHER STATION _____ STATION _____
 ZONE _____ ELEVATION _____ NORTHINGS (Y) _____ EASTINGS (X) _____

(Fold)

SKETCH: (Include reference tie or witness points, remarks and topo of area)



SURVEYOR'S CERTIFICATE
 THIS CORNER RECORD WAS PREPARED BY ME OR UNDER MY DIRECTION IN CONFORMANCE WITH THE LAND SURVEYORS ACT ON APRIL 15 19 84
 SIGNED: [Signature]
 No. 27029
 R.C.E. No. 27029
 CIVIL ENGINEER
 STATE OF CALIFORNIA

COUNTY SURVEYOR'S CERTIFICATE
 THE CORNER RECORD WAS RECEIVED April 25 19 84
 AND EXAMINED AND FILED 12 JULY 19 84
 BY: [Signature]
 TITLE: County Surveyor
 DOCUMENT No. 2124
 STATEMENT ON BACK OF SHEET YES NO