

#2118

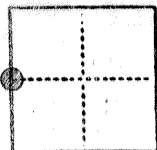
(FOR COPY ONLY)

CORNER RECORD

CITY OF MERCED T. B.S. R. 13.E MDB&M MERIDIAN CALIFORNIA

CORNER TYPE: GOV'T. CORNER MEANDER RANCHO CONTROL OTHER

CORNER IDENTIFICATION — DATE OF VISIT APRIL 06 1984



1/4 Cor West Line sec 8

CORNER — LEFT AS FOUND FOUND AND TAGGED REESTABLISHED OBLITERATED CORNER REBUILT

PHYSICAL DESCRIPTION OF CORNER FOUND, EVIDENCE AND METHOD USED TO IDENTIFY OR REESTABLISH

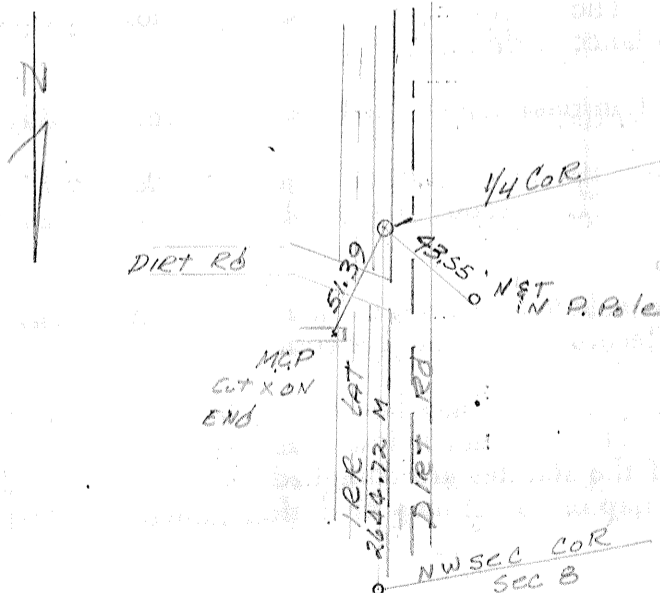
Fb 2 1/2" I.P. Down 1.S

PHYSICAL DESCRIPTION OF MONUMENTS REBUILT OR PERPETUATED

CALIFORNIA COORDINATE SYSTEM ORDER: FIRST SECOND THIRD
STATIONS USED: NGS (USC & GS) STATE COUNTY OTHER STATION _____ STATION _____
ZONE _____ ELEVATION _____ NORTHINGS (Y) _____ EASTINGS (X) _____

(Fold)

SKETCH: (Include reference tie or witness points, remarks and topo of area)



SURVEYOR'S CERTIFICATE

THIS CORNER RECORD WAS PREPARED BY DANNY C. HOOPER OR UNDER MY DIRECTION IN CONFORMANCE WITH THE LAND SURVEYORS ACT ON APRIL 10 1984

SIGNED: _____

R.C.E. No. 27029



COUNTY SURVEYOR'S CERTIFICATE

THE CORNER RECORD WAS RECEIVED April 25 1984 AND EXAMINED AND FILED 12 JULY 1984

BY: Harold G. Hill
TITLE: County Surveyor

DOCUMENT No. 2118

STATEMENT ON BACK OF SHEET

YES NO