

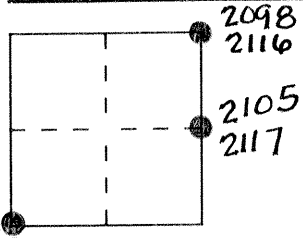
CORNER RECORD

Document Number 2098, 2102, 2105

City of NONE

County of MERCED, California

Brief Legal Description SECTION 12, T8S, R12E MDB&M



CORNER TYPE

- Government Corner Control
- Meander Property
- Rancho Other
- Date of Survey _____

COORDINATES (Optional)

N. _____
 E. _____
 Zone _____ Datum _____
 Elev. _____

Corner — Left as found Found and tagged Established Reestablished Rebuilt

Identification and type of corner found: Evidence used to identify or procedure used to establish or reestablish the corner:
AS NOTED ON SKETCH, SEE REVERSE

A description of the physical condition of the monument as found and as set or reset: AS NOTED ON SKETCH, SEE REVERSE

SURVEYOR'S STATEMENT

This Corner Record was prepared by me or under my direction in conformance with the Land Surveyors' Act on OCT 23 1995.

Signed Robert C. Hart, Jr. P.L.S. or R.C.T. Number 5784



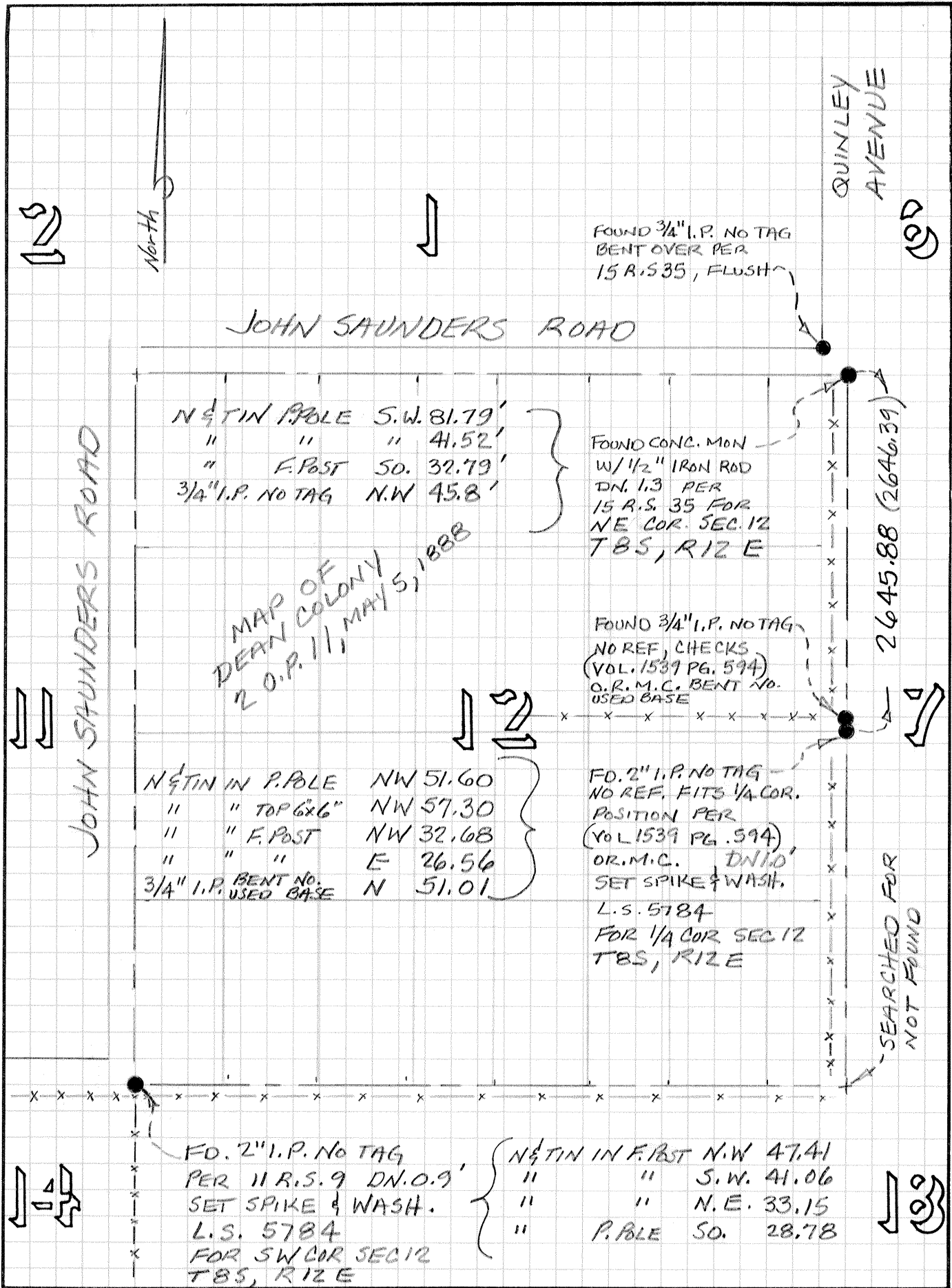
COUNTY SURVEYOR'S STATEMENT

This Corner Record was received OCTOBER 1995 and examined and filed OCTOBER 31, 1995.

Signed Roy L. Turney Title DEP. CO. SUR.



County Surveyor's Comment Agrees with existing corner records



North

FOUND 3/4" I.P. NO TAG
BENT OVER PER
15 R.S. 35, FLUSH

JOHN SAUNDERS ROAD

QUINLEY AVENUE

N 1/4 TIN P. POLE S.W. 81.79'
" " " 41.52'
" F. POST SO. 32.79'
3/4" I.P. NO TAG N.W. 45.8'

FOUND CONC. MON
W/ 1/2" IRON ROD
DN. 1.3 PER
15 R.S. 35 FOR
NE COR. SEC. 12
TBS, RIZE

MAP OF
DEAN COLONY
2 O.P. 11, MAY 5, 1888

FOUND 3/4" I.P. NO TAG
NO REF, CHECKS
(VOL. 1539 PG. 594)
O.R.M.C. BENT NO.
USED BASE

2645.88 (2646.39)

N 1/4 TIN IN P. POLE NW 51.60
" " TOP 6x6" NW 57.30
" " F. POST NW 32.68
" " " E 26.56
3/4" I.P. BENT NO.
USED BASE N 51.01

FO. 2" I.P. NO TAG
NO REF, FITS 1/4 COR.
POSITION PER
(VOL. 1539 PG. 594)
O.R.M.C. DN. 1.0'
SET SPIKE & WASH.
L.S. 5784
FOR 1/4 COR SEC 12
TBS, RIZE

SEARCHED FOR
NOT FOUND

FO. 2" I.P. NO TAG
PER 11 R.S. 9 DN. 0.9'
SET SPIKE & WASH.
L.S. 5784
FOR SW COR SEC 12
TBS, RIZE

N 1/4 TIN IN F. POST N.W. 47.41
" " " S.W. 41.06
" " " N.E. 33.15
" P. POLE SO. 28.78