

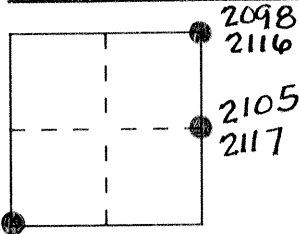
**CORNER RECORD**

Document Number 2098, 2102, 2105

City of NONE

County of MERCED, California

Brief Legal Description SECTION 12, T8S, R12E MDB&M



#2102

**CORNER TYPE**

- Government Corner
- Meander
- Rancho
- Date of Survey \_\_\_\_\_
- Control
- Property
- Other

**COORDINATES (Optional)**

N. \_\_\_\_\_  
 E. \_\_\_\_\_  
 Zone \_\_\_\_\_ Datum \_\_\_\_\_  
 Elev. \_\_\_\_\_

Corner — Left as found  Found and tagged  Established  Reestablished  Rebuilt

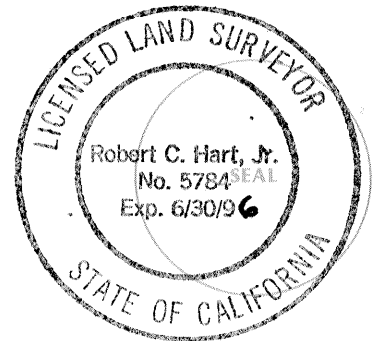
Identification and type of corner found: Evidence used to identify or procedure used to establish or reestablish the corner:  
AS NOTED ON SKETCH, SEE REVERSE

A description of the physical condition of the monument as found and as set or reset: AS NOTED ON SKETCH, SEE REVERSE

**SURVEYOR'S STATEMENT**

This Corner Record was prepared by me or under my direction in conformance with the Land Surveyors' Act on OCT 23 1995.

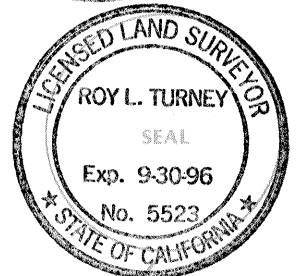
Signed Robert C. Hart, Jr. P.L.S. or R.C.T. Number 5784



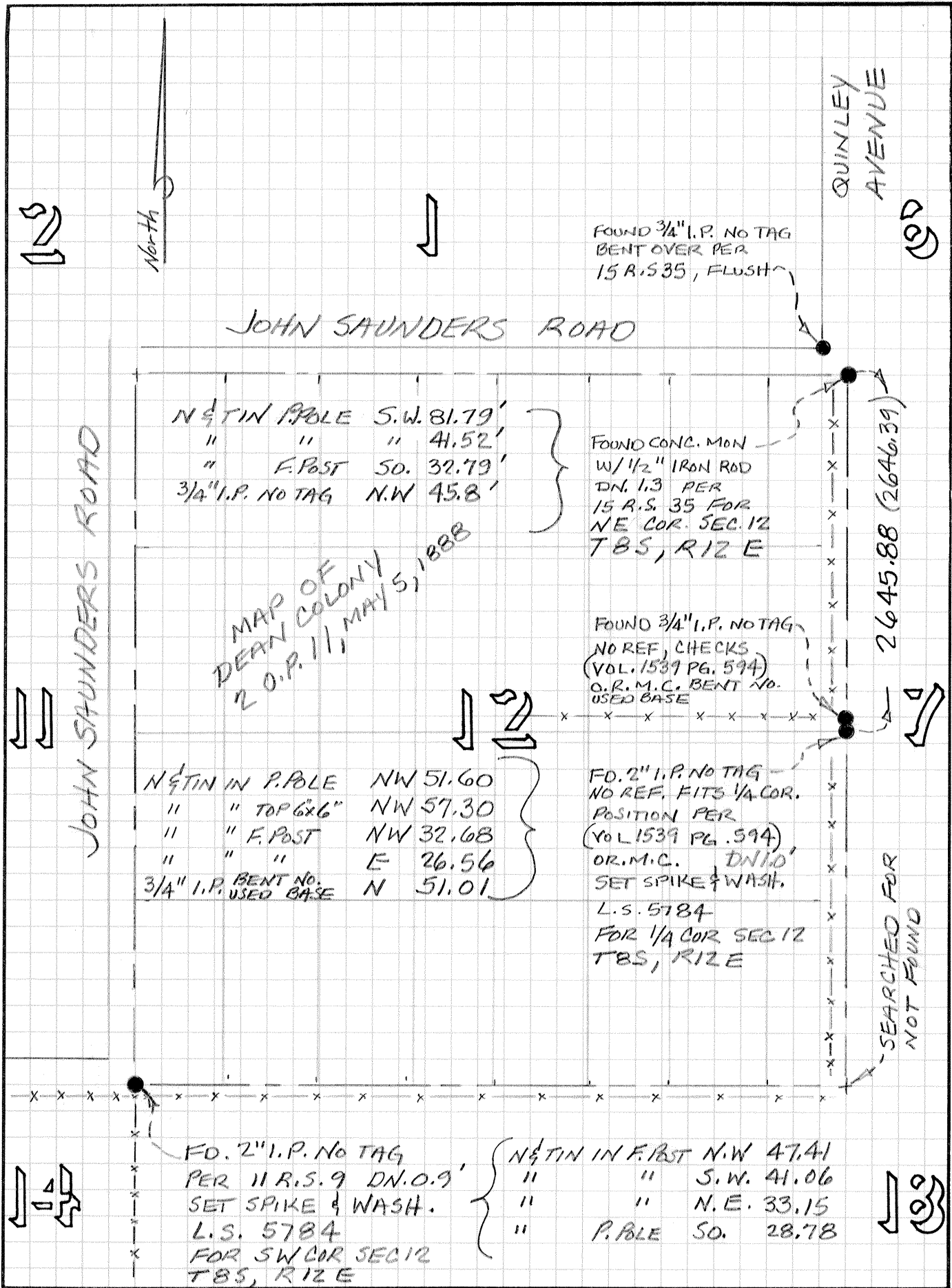
**COUNTY SURVEYOR'S STATEMENT**

This Corner Record was received OCTOBER 1995 and examined and filed OCTOBER 31, 1995.

Signed Roy L. Turney Title DEP. CO. SUR.



County Surveyor's Comment Agrees with existing corner records



North

FOUND 3/4" I.P. NO TAG  
BENT OVER PER  
15 R.S. 35, FLUSH

JOHN SAUNDERS ROAD

QUINLEY AVENUE

N 1/4 TIN P. BLE S.W. 81.79'  
" " " 41.52'  
" F. POST SO. 32.79'  
3/4" I.P. NO TAG N.W. 45.8'

FOUND CONC. MON  
W/ 1/2" IRON ROD  
DN. 1.3 PER  
15 R.S. 35 FOR  
NE COR. SEC. 12  
TBS, RIZE

MAP OF  
DEAN COLONY  
2 O.P. 11, MAY 5, 1888

FOUND 3/4" I.P. NO TAG  
NO REF, CHECKS  
(VOL. 1539 PG. 594)  
O.R.M.C. BENT NO.  
USED BASE

2645.88 (2646.39)

N 1/4 TIN IN P. BLE NW 51.60  
" " TOP 6x6" NW 57.30  
" " F. POST NW 32.68  
" " " E 26.56  
3/4" I.P. BENT NO.  
USED BASE N 51.01

FO. 2" I.P. NO TAG  
NO REF, FITS 1/4 COR.  
POSITION PER  
(VOL. 1539 PG. 594)  
O.R.M.C. DN. 1.0'  
SET SPIKE & WASH.  
L.S. 5784  
FOR 1/4 COR SEC 12  
TBS, RIZE

SEARCHED FOR  
NOT FOUND

FO. 2" I.P. NO TAG  
PER 11 R.S. 9 DN. 0.9'  
SET SPIKE & WASH.  
L.S. 5784  
FOR SW COR SEC 12  
TBS, RIZE

N 1/4 TIN IN F. POST N.W. 47.41  
" " " S.W. 41.06  
" " " N.E. 33.15  
" P. BLE SO. 28.78