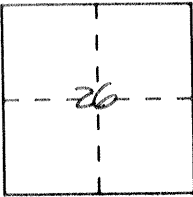


CORNER RECORD

Document Number 2093 A.

City of _____ County of MERCED, California

Brief Legal Description SOUTHEAST COR. 15 RS 49 - MER. CO. REC. IN SECT 26, T. 7 S., R. 11 E. M.D.M.



CORNER TYPE

Government Corner Control
Meander Property
Rancho Other
Date of Survey 2/6/92

COORDINATES (Optional)

N. _____
E. _____
Zone _____ Datum _____
Elev. _____

Corner — Left as found Found and tagged Established Reestablished Rebuilt

Identification and type of corner found: Evidence used to identify or procedure used to establish or reestablish the corner: 2-COTTON SPINDLES, 2- 1" IRON PIPES, L.S. 2402 IN GOOD CONDITION PER 15 RS 49, MER. CO. REC.

A description of the physical condition of the monument as found and as set or reset: MONUMENTS APPEAR TO BE IN GOOD CONDITION

SURVEYOR'S STATEMENT

This Corner Record was prepared by me or under my direction in conformance with the Land Surveyors' Act on 2-6 1992.

Signed Ralph Scheel L.S. or R.C.E. Number 3730



COUNTY SURVEYOR'S STATEMENT

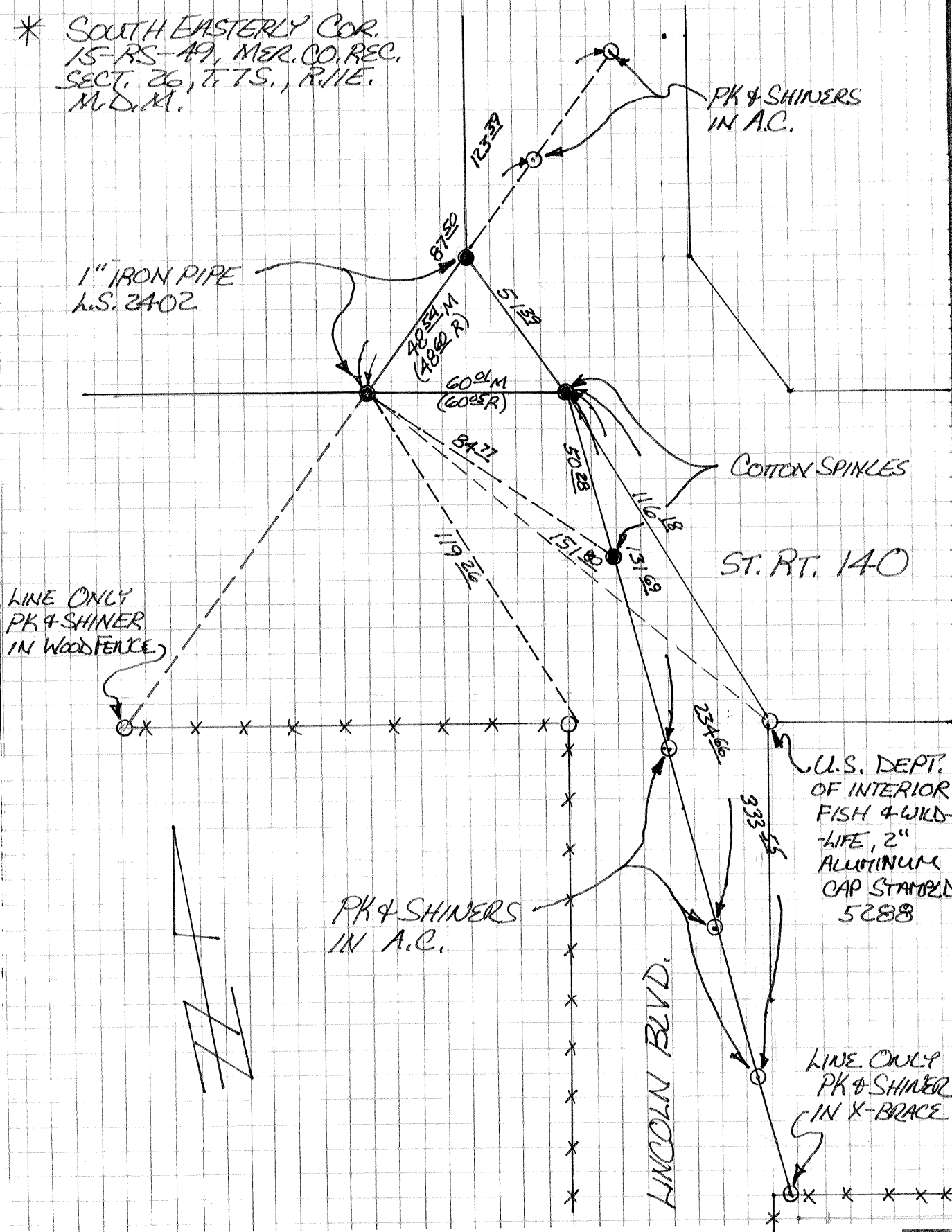
This Corner Record was received 3-13 1992 and examined and filed 3-20- 1992.

Signed Roy L. Turney Title Dep. Co. Surveyor



County Surveyor's Comment _____

* SOUTH EASTERLY COR.
 15-RS-49, MER. CO. REC.
 SECT. 26, T. 7S., R. 11E.
 M.D.M.



PK & SHINERS
 IN A.C.

1" IRON PIPE
 L.S. 2402

COTTON SPINDLES

ST. RT. 140

LINE ONLY
 PK & SHINER
 IN WOOD FENCE

U.S. DEPT.
 OF INTERIOR
 FISH & WILD-
 LIFE, 2"
 ALUMINUM
 CAP STAMPED
 5288

PK & SHINERS
 IN A.C.

LINCOLN BLVD.

LINE ONLY
 PK & SHINER
 IN X-BRACE