

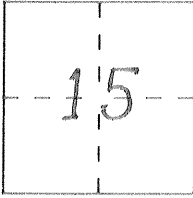
CORNER RECORD

Document Number 2060-Y

City of So. Dos Palos

County of MERCED, California

Brief Legal Description PARCEL 1, PARCEL MAP VOL. 12, PG. 27 M.C.R



CORNER TYPE

COORDINATES (Optional)

- Government Corner
- Meander
- Rancho
- Date of Survey _____
- Control
- Property
- Other

N. _____
 E. _____
 Zone _____ Datum _____
 Elev. _____

Corner — Left as found Found and tagged Established Reestablished Rebuilt

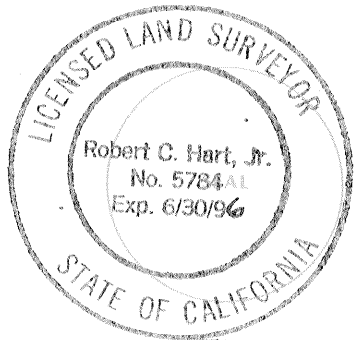
Identification and type of corner found: Evidence used to identify or procedure used to establish or reestablish the corner:
SEE SKETCH ON REVERSE

A description of the physical condition of the monument as found and as set or reset:
SET 3/4" G.I.P., FLUSH, TAGGED P.L.S. 5784
SEE SKETCH ON REVERSE

SURVEYOR'S STATEMENT

This Corner Record was prepared by me or under my direction in conformance with the Land Surveyors' Act on MARCH 29 1996.

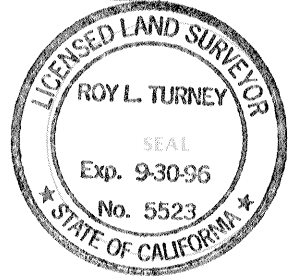
Signed Robert C. Hart Jr. L.S. or R.C.E. Number 5784



COUNTY SURVEYOR'S STATEMENT

This Corner Record was received APRIL 1996 and examined and filed APRIL 18 1996.

Signed Roy L. Turney Title DEP CO. SUR.



County Surveyor's Comment _____

FD. 2" G.I.P. W/REDWOOD HUB AND PLAS. TAG LS ??93
3 DN. 0.8' IN MON WELL NO LID, FOR CTR 1/4 COR SEC
15, T 11 S., R 12 E M.D.B & M.

CHRISTIAN AVENUE

FD. REMNANTS OF 3"X3"
HUB W/ CONCRETE FTG.
SET 1" O.D.I.P. IN CTR, FLUSH

178.40 (178.75)
N89°36'30"W

Part 1, 12 PM 27
M.C.R. DN.0.4'

178.71 (178.75)
N89°36'20"W

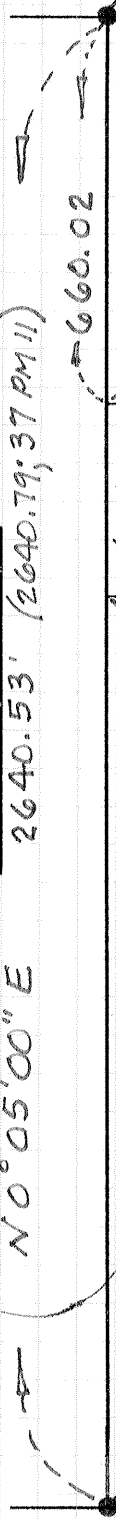
FD. 3/4" I.P. TAG LS 656 DN 1.0 PER
PARCEL MAP VOL. 12 PG. 27, M.C.R.

FD. 1.5" I.P. W/ MERCED COUNTY
SURVEYOR PLAS, PLUG DN. 0.3' IN
MONUMENT WELL, FOR SO. 1/4 COR
SEC. 15, T 11 S, T 12 E, M.D.B & M.

REYNOLDS AVENUE

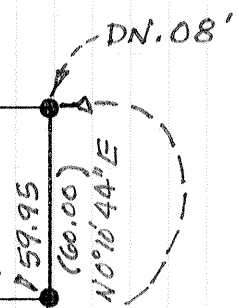
2640.53' (2640.79, 37 PM 11)

N 0° 05' 00" E



30'
30.12
60.00
60.00
29.71
30'

N 0° 28' 29" E



SHAIN AVENUE