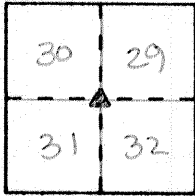


**CORNER RECORD**

Document Number 2054  
City of \_\_\_\_\_ County of MERCED, California

Brief Legal Description NORTHEAST CORNER, SECTION 31, T.9.S., R.9.E., M.D.B.&M.



**CORNER TYPE**

Government Corner  Control   
Meander  Property   
Rancho  Other   
Date of Survey 7/13/00

**COORDINATES**  
(Optional)

N. \_\_\_\_\_  
E. \_\_\_\_\_  
Zone \_\_\_\_\_ Datum \_\_\_\_\_  
Elev. \_\_\_\_\_

Corner -- Left as found  Found and tagged  Established  Reestablished  Rebuilt

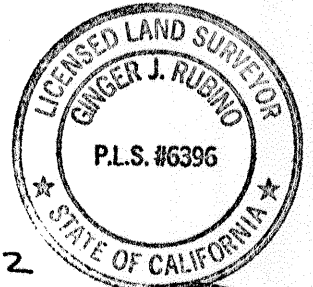
Identification and type of corner found: Evidence used to identify or procedure used to establish or reestablish the corner: FOUND 1/2" O.D.I.P. DOWN 0<sup>100</sup> METERS IN MONUMENT WELL STAMPED RCE 27029 PER 76 PM 10.

A description of the physical condition of the monument as found and as set or reset: MONUMENT IN GOOD CONDITION

**SURVEYOR'S STATEMENT**

This Corner Record was prepared by me or under my direction in conformance with the Land Surveyors' Act on 7/17/2000

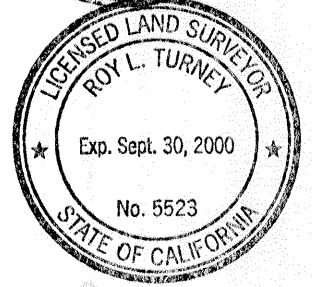
Signed Ginger J. Rubino L.S. or R.C.E. Number 6396 Expires 12/31/2002



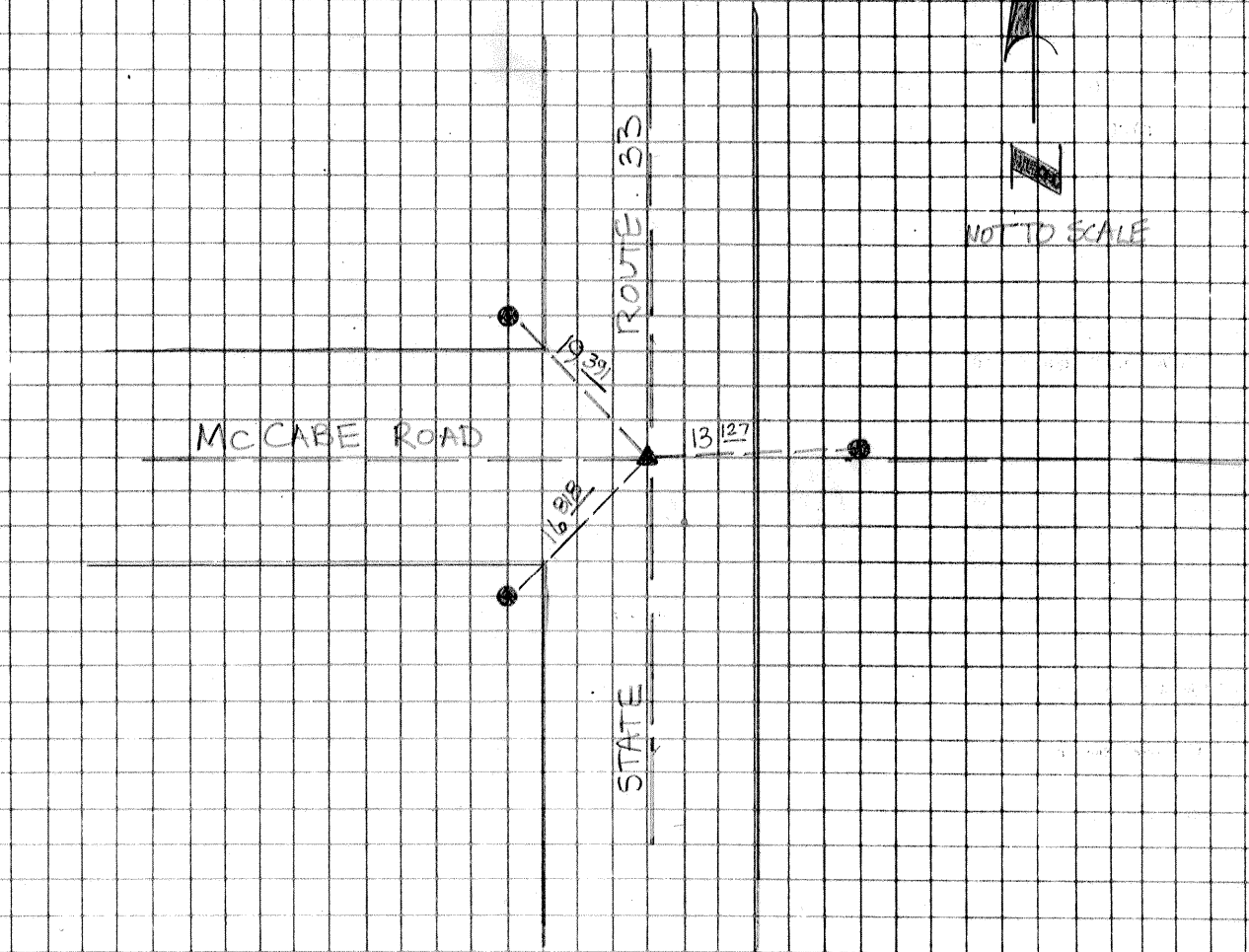
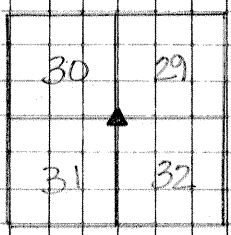
**COUNTY SURVEYOR'S STATEMENT**

This Corner Record was received JULY 28, 2000 and examined and filed AUGUST 10, 2000

Signed Roy L. Turney Title DEP. CO. SURVEYOR



County Surveyor's Comment \_\_\_\_\_



LEGEND

▲ FOUND 1 1/2" O.D. I.P DOWN 0<sup>160</sup> M IN MONUMENT WELL, RCE 27029

● SET 60 D SPIKE

NOTE: ALL DIMENTIONS ARE IN METERS