

CORNER RECORD

COUNTY OF MERCED T. 9 S. R. 9 E. M.D.B. & MERIDIAN CALIFORNIA
 CORNER TYPE: GOV'T. CORNER MEANDER RANCHO CONTROL OTHER
 CORNER IDENTIFICATION — DATE OF VISIT FEBRUARY 1, 1988

32

CORNER — LEFT AS FOUND FOUND AND TAGGED REESTABLISHED OBLITERATED CORNER REBUILT

PHYSICAL DESCRIPTION OF CORNER FOUND; EVIDENCE AND METHOD USED TO IDENTIFY OR REESTABLISH

SEE PLAT BELOW.

PHYSICAL DESCRIPTION OF MONUMENTS REBUILT OR PERPETUATED

SET 3/4" IRON PIPE, TAGGED L.S. 4685

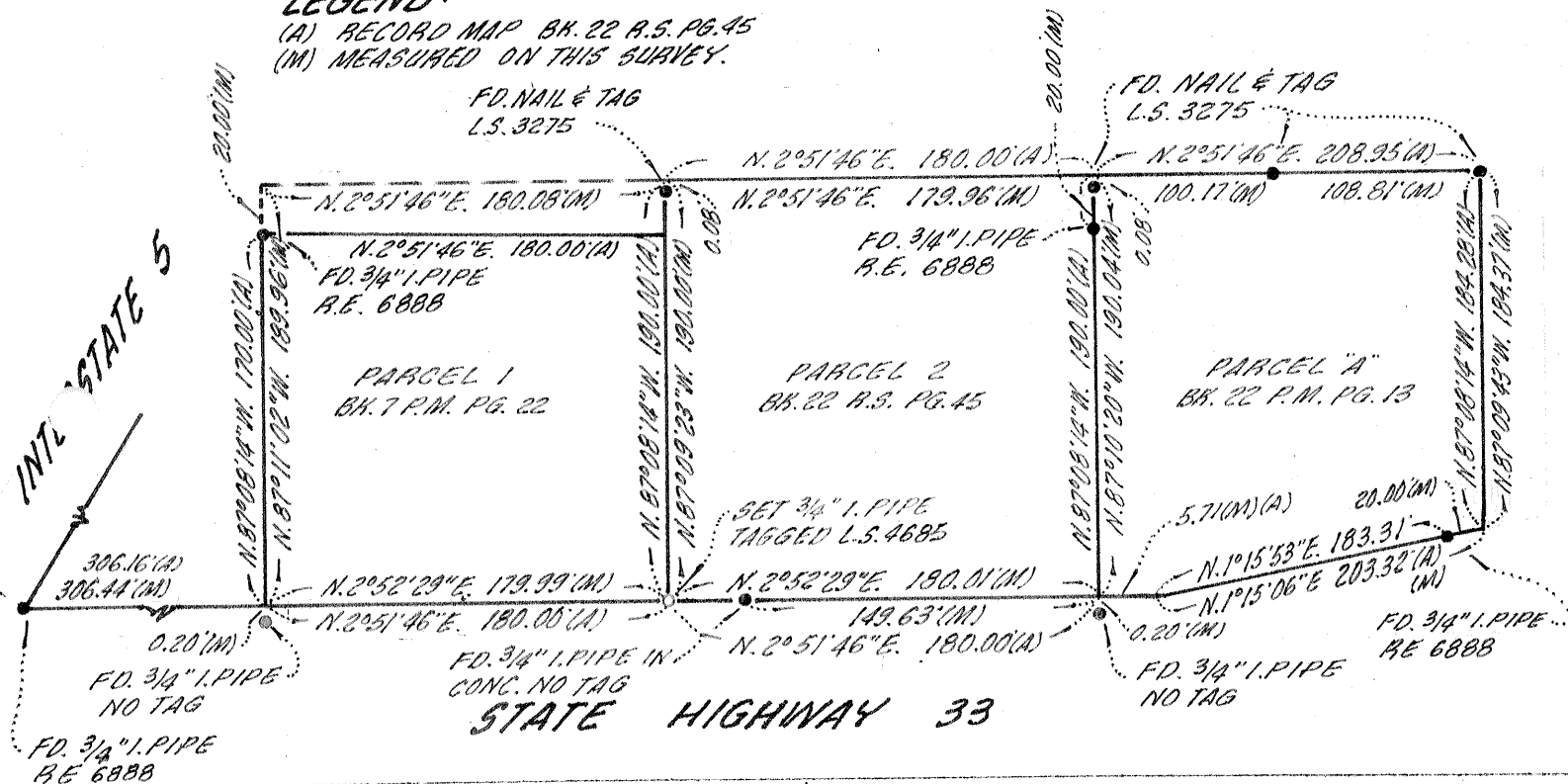
CALIFORNIA COORDINATE SYSTEM ORDER: FIRST SECOND THIRD
 STATIONS USED: NGS (USC & GS) STATE COUNTY OTHER STATION _____ STATION _____
 ZONE _____ ELEVATION _____ NORTHINGS (Y) _____ EASTINGS (X) _____

(Fold)

SKETCH: (Include reference tie or witness points, remarks and topo of area)

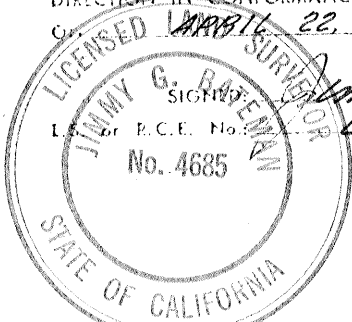
LEGEND:

(A) RECORD MAP BK. 22 R.S. PG. 45
 (M) MEASURED ON THIS SURVEY.



SURVEYOR'S CERTIFICATE

THIS CORNER RECORD WAS PREPARED BY ME OR UNDER MY DIRECTION IN CONFORMANCE WITH THE LAND SURVEYORS ACT OF 1907.



SIGNED Jimmy P. Bateman
 L.S. No. 4685
 DATE 22, 1988

SEAL

COUNTY SURVEYOR'S CERTIFICATE

THE CORNER RECORD WAS RECEIVED 5-6-1988
 AND EXAMINED AND FILED 5-6-1988

BY: Ray Turner
 TITLE: Deputy County Surveyor

DOCUMENT No. 2054-H

STATEMENT ON BACK OF SHEET

YES NO